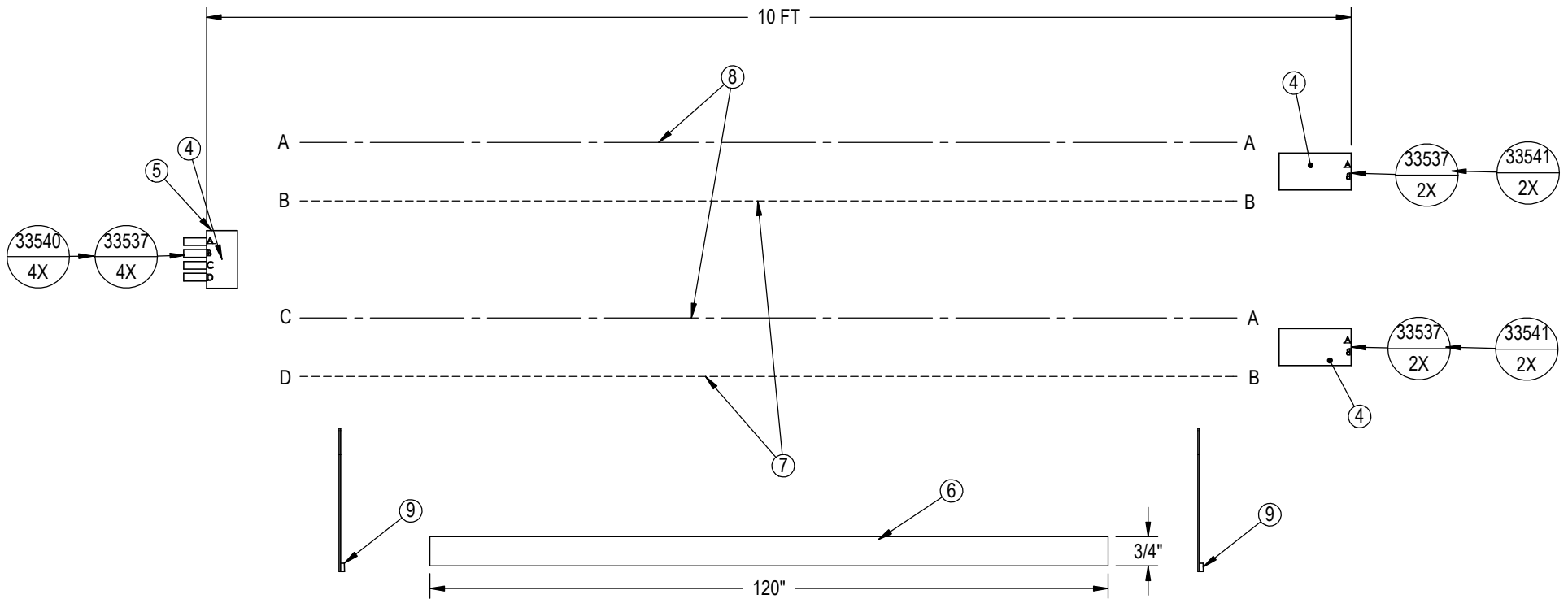


NOTE: USE CABLE TIES TO SECURE LOOM ENDS

RELEASED

ITEM NO.	PART NO.	DESCRIPTION	QTY.
1	33537	ELEC_SEAL,WP,CABLE	8
2	33540	ELEC_SLEEVE,WP,F,14/16	4
3	33541	ELEC_PIN,WP,M,14/16	4
4	33543	ELEC_CONN,2,W/P,SHROUD,K01	2
5	33544	ELEC_CONN,4,W/P,TOWER,K02	1
6	92143(10)	ELEC_LOOM,1/2,SPLIT,CORRIGATED	1
7	92149(10)	ELEC_WIRE,16GA,STRAND,BLACK	2
8	92151(10)	ELEC_WIRE,16GA,STRAND,RED	2
9	92170	TIE,CABLE,4",BLACK	2

UM (FEET)



REV	DESCRIPTION	DATE	MADE BY	APPROVAL
B	REPRINT FOR DESCRIPTION CHANGE	11 JAN 05	KL	01091
B	CHANGE NOTES FROM ITEM NUMBERS TO PART NUMBERS	01 OCT 03	SMB	01006
A	INITIAL RELEASE	14 MAY 03	JAH	00963

REVISION HISTORY

The information contained in this drawing is the sole property of HIGHLINE Mfg. Inc. Any reproduction or disclosure, in whole or part, without the written permission of HIGHLINE Mfg. Inc. is prohibited. The equipment shown may be protected by existing or pending patents.

UNLESS OTHERWISE SPECIFIED
DIMENSIONS ARE IN INCHES

TOLERANCES
FRACTION DECIMAL ANGLE HOLES
± 1/16 .XX = ± .02 ± .5° +1/32"
.XXX = ± .005 -0"

DO NOT SCALE FROM DRAWING

WELD SIZE AS PER SMALLEST
PARENT THICKNESS, ALL AROUND,
UNLESS OTHERWISE SPECIFIED

DRAWN BY
JAH

DATE DRAWN
05 MAY 03

ENG APPROVAL

DATE APPROVED

MATERIAL SPECIFICATION

DESCRIPTION

RAW MATERIAL PART NO

HIGHLINE MFG INC

DESCRIPTION
ELEC,HARNESS,10FT

SIZE A	FILE 49842_B	PART NO 49842	REV B
-----------	-----------------	------------------	----------

SCALE 1:4 SHEET 1 OF 1