

**Accelerator XTRA-A
6510, 7510, 8510
Models
Owner's Manual**

This page intentionally left blank.

Table of Contents

Warranty 5

President’s Message 6

Safety Precautions 7

1.0 Operating Instructions 9

 1.1 Transporting Instructions 9

 1.2 Pre-Operation Instructions 9

 1.3 Field Instructions 11

 1.4 General Operating Instructions 11

 1.5 Cable Adjustment 13

 1.6 Slow Moving Vehicle Sign Placement 14

2.0 Maintenance Instructions 15

 2.1 Grease Locations 15

3.0 Main Assembly Parts Information 16

 3.1 Intake Assembly (Part No. 50262) 16

 3.2 Stage 1 Assemblies 18

 3.2.1 6510 Stage 1 Assembly (Part No. 50323) 18

 3.2.2 7510 and 8510 Stage 1 Assembly (Part No. 50267) 20

 3.3 Drive Assembly (Part No. 50305) 22

 3.4 Stage 2 Assembly 24

 3.4.1 6510 Stage 2 Assembly (Part No. 50321) 24

 3.4.2 7510 Stage 2 Assembly (Part No. 50320) 25

 3.4.3 8510 Stage 2 Assembly (Part No. 50268) 26

 3.5 Training Idler (Part No. 50369) 27

 3.6 Skirt Assembly (Part No. 50338,50339,50340) 28

 3.7 Belting (Part No. E5447 - 6510, E5445 - 8510) 29

 3.8 Discharge Assembly (Part No. 50260) 30

 3.9 Wire Rope Assemblies 32

 3.9.1 Short Wire Rope Assemblies (Part No. 50330,50328,50326) 32

 3.9.2 Long Wire Rope Assemblies (Part No. 50331,50329,50327) 33

 3.10 Frame & Suspension Assembly (Part No. 50272) 34

 3.10.1 Wheel Assembly (Part No. 49089) 36

 3.10.2 Hub Assembly (Part No. 45228) 36

 3.11 Hitch Assembly (Part No. 50348) 37

 3.12 Jack Assembly (Part No. 50363) 38

 3.13 Light Kit Assembly (Part No. 50313) 39

 3.14 Decal Kit (Part No. 50294,50292,50180) 40

 3.15 Strap Assembly (Part No. 50368) 41

Table of Contents (cont'd)

4.0 Hydraulic Parts Information	42
4.1 Hitch Cylinder Assembly (Part No. 50175)	42
4.1.1 2x6 Cylinder (Part No. 30088)	43
4.2 Main Lift Cylinder Assembly	44
4.2.1 4x36 Cylinder (Part No. 30086)	45
4.2.2 4.5x36 Cylinder (Part No. 31928)	46
4.3 Conveyor Auger Hydraulic Kit (Part No. 50285)	47
4.3.1 Hydraulic Motor Assembly(Part No. 30087)	48
5.0 Belt Direction Diagrams	49
6.0 Part Number Index	50
7.0 Specifications	57
Dealer Information	58
Identification Numbers	58
Dealer Checklist	59

Warranty

Highline New Agricultural Equipment Limited Warranty

Effective July 1, 2000 Two (2) Year / 24 Months

1st Year Parts and Labour –2nd Year Parts Only

Highline Mfg. Inc (hereinafter "Highline") warrants each new Agricultural product of Highline's manufacturer to be free from defects in material and workmanship, under normal use and service for two (2) full years after initial purchase/retail sale. Highline will warrant its product for one (1) year parts and labour, if performed by a qualified Dealer and on the second year parts only. This Limited Warranty shall apply only to complete machines of Highline's manufacture, parts are covered by a separate Limited Warranty.

EQUIPMENT AND ACCESSORIES NOT OF HIGHLINE'S MANUFACTURE ARE WARRANTED ONLY TO THE EXTENT OF THE ORIGINAL MANUFACTURER'S WARRANTY AND SUBJECT TO THEIR ALLOWANCE TO HIGHLINE ONLY IF FOUND DEFECTIVE BY SUCH MANUFACTURER.

During the Limited Warranty period specified above, any defect in material or workmanship in any warranted item of Highline Agricultural Equipment not excluded below shall be repaired or replaced at Highline's option without charge by any authorized independent Highline Dealer. An authorized Dealer must make the warranty repair or replacement. Labour in accordance with Highline's labour reimbursement policy. Highline reserves the right to supply remanufactured replacement parts as it deems appropriate.

RETAIL PURCHASER RESPONSIBILITY: This Limited Warranty requires proper maintenance and periodic inspections of the Agricultural Equipment as indicated in the Operator's Manual furnished with each new Agricultural Equipment. The cost of routine or required maintenance and services is the responsibility of the retail purchaser. The retail purchaser is required to keep documented evidence that these services were performed. This Highline New Agricultural Equipment Limited Warranty may be subject to cancellation if the above requirements are not performed

EXCLUSIONS AND LIMITATIONS

The warranties contained herein shall **NOT APPLY TO:**

- (1) Any defect which was caused (in Highline's sole judgement) by other than normal use and service of the Agricultural Equipment, or by any of the following: (i) accident (ii) misuse or negligence (iii) overloading (iv) lack of reasonable and proper maintenance (v) improper repair or installation (vi) unsuitable storage (vii) non-Highline approved alteration or modification (viii) natural calamities (ix) vandalism (x) parts or accessories installed on Agricultural Equipment which were not manufactured or installed by Highline authorized Dealers (xi) the elements (xii) collision or other accident.
- (2) Any Agricultural Equipment whose identification numbers or marks have been altered or removed.
- (3) Any Agricultural Equipment which any of the required or recommended periodic inspection or services have been performed using parts not manufactured or supplied by Highline or meeting Highline Specifications including, but without limitation, lubricants (oil, grease), belt lacings, and hydraulic fluids.
- (4) Equipment used for rental, custom work, industrial and construction or if equipment is used for any other purpose than the intended agricultural application.
- (5) Any Agricultural Equipment used in demonstrations not performed by a Highline Dealer. Warranty will be at the discretion of Highline for all other demonstration warranty.
- (6) **New Agricultural Equipment delivered to the retail purchaser in which the warranty registration has not been completed and returned to Highline within ten (10) days from the date of purchase**
- (7) Any defect that was caused (in Highline's sole judgement) by operation of the Agricultural Equipment not abiding by standard operating procedures outlined in the Operator's Manual.
- (8) Tire Limited Warranties and support are the responsibility of the respective product's manufacturer.
- (9) Transportation costs, if any, of transporting to the Highline Dealer.
- (10) In no event shall Highline's liability exceed the purchase price of the product.
- (11) Highline shall not be liable to any person under any circumstances for any incidental or consequential damages (including but not limited to, loss of profits, out of service time and damage to equipment which this equipment may be attached) occurring for any reason at any time.
- (12) Diagnostic and overtime labour premiums are not covered under this Limited Warranty Policy.
- (13) Depreciation damage caused by normal wear, lack of reasonable and proper maintenance, failure to follow operating instructions, misuse, and/or lack of proper protection during storage.
- (14) Accessory systems and electronics not of Highline's manufacture are warranted only to the extent of such manufacturer's respective Limited Warranty if any.
- (15) Wear items which are listed by product group below:

COMMON WEAR ITEMS: roller chain, sprockets, clutches, shear bolts, clutch components, chains, gearbox housings bolts/torqued parts, flails, feed roller belting, coupler chain, DRV couplers, bogie wheels, apron tines and hoses.

PARTS WARRANTY

Parts replaced in the warranty period will receive the balance of the two year New Agricultural Equipment Limited Warranty. Replacement parts after the original machine warranty are warranted to be free from defects of material for ninety (90) days or the part will be repaired or replaced, without labour coverage for removal and reinstallation.

EXCLUSION OF WARRANTIES. UNLESS OTHERWISE REQUIRED BY LAW, AND EXCEPT FOR THE WARRANTIES EXPRESSLY AND SPECIFICALLY MADE HEREIN, HIGHLINE MAKES NO OTHER WARRANTIES, AND ANY POSSIBLE LIABILITY OF HIGHLINE HEREIN UNDER IS IN LIEU OF ALL OTHER WARRANTIES, EXPRESS, IMPLIED, OR STATUTORY, INCLUDING, BUT NOT LIMITED TO, ANY WARRANTIES OF MERCHANT ABILITY OR FITNESS FOR A PARTICULAR PURPOSE. HIGHLINE RESERVES THE RIGHT TO MODIFY, ALTER AND IMPROVE ANY PRODUCT WITHOUT INCURRING ANY OBLIGATION TO REPLACE ANY PRODUCT PREVIOUSLY SOLD WITH SUCH MODIFICATION. NO PERSON IS AUTHORIZED TO GIVE ANY OTHER WARRANTY, OR TO ASSUME ANY ADDITIONAL OBLIGATION ON HIGHLINE'S BEHALF.

President's Message

Thank you for your recent purchase of the Accelerator, the fastest 10" conveyor. The Accelerator is the only conveyor to combine gentle handling with auger-like speed. With proper maintenance, the Accelerator will provide years of outstanding performance.

This Operator's Manual has been prepared to provide information necessary for the safe and efficient operation of your Accelerator. In it, you will find safety procedures, maintenance routines, and detailed parts diagrams.

In order to maintain our high standards, changes or improvements are made from time to time. Highline Mfg. Inc. reserves the right to make changes and add improvements when practical to do so without incurring any obligation to make such changes on previously sold machines.

Should the need arise, this manual will assist you in acquiring replacement parts. If your dealer does not have the parts you need in stock, they will be happy to order them in for you. Feel free to contact Highline Mfg. Inc. or your local dealer if you need information that is not included in this manual.

Highline Mfg. Inc. would like to thank you again for entrusting your grain handling needs to the Accelerator.

Raymond J. Bussière, President
Highline Mfg. Inc.

PO Box 307, Vonda, Saskatchewan, S0K 4N0


Phone 1-800-665-2010 Fax (306) 258-2010

Internet Address: <http://www.highlinemfg.com>

Safety Precautions

WORK SAFELY – FOLLOW THESE INSTRUCTIONS

CAREFUL OPERATION IS THE BEST INSURANCE AGAINST AN ACCIDENT!

 **Before operating the Accelerator, be sure to review *all* of the instructions and familiarize yourself with its features.**

- Keep yourself and others clear of rotating parts to prevent injury.
- Exercise extreme caution while loading or unloading grain.
- Never attempt to manually remove debris while the PTO is engaged. Disengage the PTO before unplugging the Accelerator.
- Relieve pressure in hydraulic lines before disconnecting lines or performing any maintenance on the hydraulic system.
- Keep away from the discharge and intake area while moving material.
- Know all of the controls and what they do.
- Check machine to ensure nothing restricts the moving or rotating parts.
- Ensure PTO is disengaged before starting tractor.
- Lower the conveyor to the ground and place on frame support after operation.
- Do not transport Accelerator on highway with any material in the conveyor. Ensure hitch is in transport position and transport locking pin is in before transporting unit.
- Do not operate without safety shields and guards in place.
- Do not stand on any guards.
- Lower conveyor when transporting to prevent contact with overhead lines.
- Make sure the ball valve is closed after raising the Accelerator and open before lowering.

This page intentionally left blank.

1.0 Operating Instructions

1.1 Transporting Instructions

The Accelerator hydraulic hitch has two operating positions. The first is the working position as shown in Figure 1.1(a). The hitch is set in this position to move the conveyor around the yard and into bin position. The second position is the transport position as shown in Figure 1.1(b). The transport position is used when the conveyor will be moved longer distances or for highway travel. Note the use of the transport locking pin.

To switch from transport to working position the Accelerator must first be supported by the jack. The transport locking pin can then be removed and stored in the hole provided. Remove the hitch cylinder pin from the transport position hole. The hitch can now be moved to line up the hitch cylinder with the working position hole. Replace the pin in the working position hole. An alternate method for switching from transport to working position is to leave the Accelerator hooked up to the tractor, support the conveyor with the jack and have a second person move the cylinder from one position to the other while the tractor operator adjusts the cylinder length.

Figure 1.1(a) - Working Setup

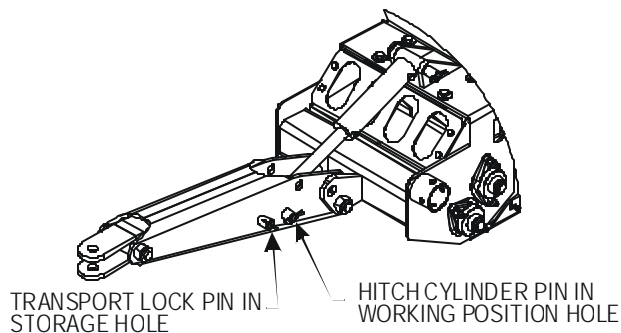
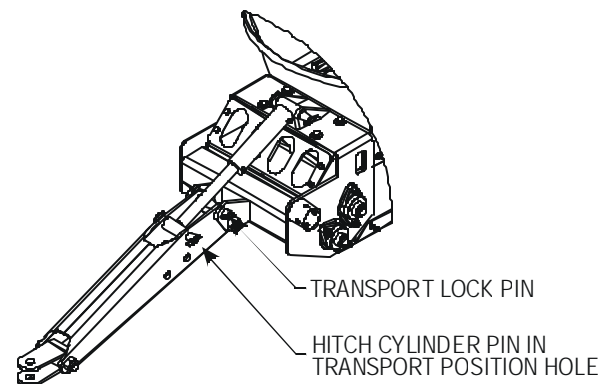


Figure 1.1(b) - Transport Setup



1.2 Pre-Operation Instructions

Prior to operating the Accelerator with material in it, operate it empty to familiarize yourself with the hydraulic controls and ensure the conveyor belt is centered. If the belt is not centered make the adjustments as described below to center it.

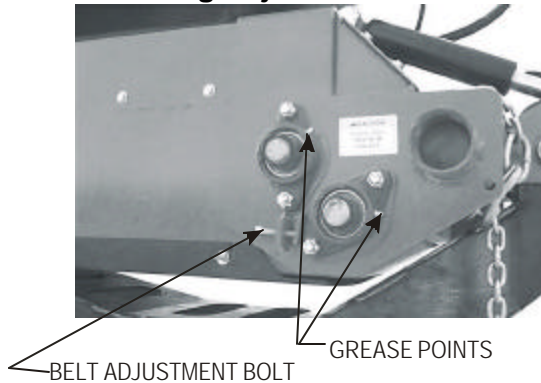
1. Belt Alignment

Run the Accelerator at tractor idling speed without product to adjust (center) the belt. There are three locations where belt adjustment may be required. These adjustment points are the intake, drive and discharge. If the belt is running off to one side, begin with the intake adjustment (Figure 1.2(a)). Loosen the two 3/4" nuts on the roller bearing flange. If the belt is running to the left tighten the square head adjusting bolt. If the belt is running off to the

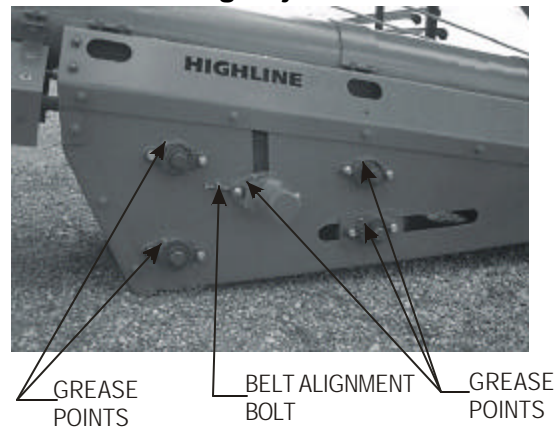
right, loosen the bolt. When the belt is running straight retighten the nuts. If the belt is still not running correctly, check the alignment of the belt going into the drive box. If the belt is running off to one side follow the same procedure as outlined above to adjust the drive roller (Figure 1.2(b)). These steps may have to be repeated to bring both adjustment points to alignment. The third adjustment point at the discharge (Figure 1.2(c)) follows the same procedure.

Note: When belt is in operation, some travel may occur in a side to side manner on the rollers. The acceptable tolerance is approximately 3/4" overall.

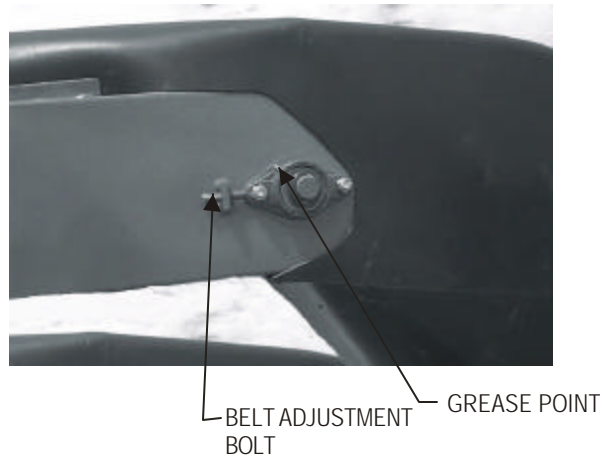
**Figure 1.2(a)
Belt Tracking Adjustment - Intake**



**Figure 1.2(b)
Belt Tracking Adjustment - Drive**



**Figure 1.2(c) Belt
Belt Tracking Adjustment - Discharge**



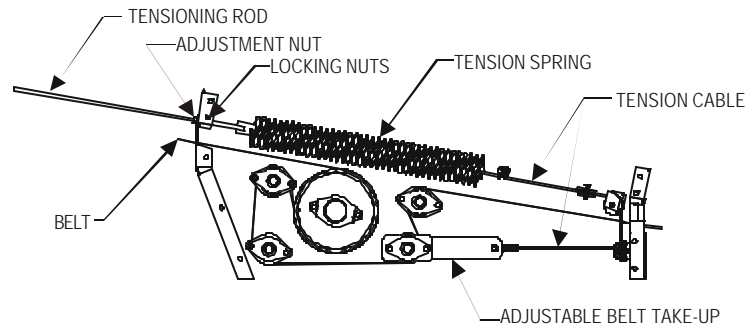
2. Belt Tension

Belt tension is set at the factory and should not need adjustment. If however after running the conveyor, it is found to be slipping under some conditions tension can be increased by following the procedure set out below.

To start, turn back the two 1/2" locking nuts (1" at a time) on the tensioning rod (Figure 1.2(d)) located on the inside of the drive box. The outside 1/2" adjustment nut can then be tightened down to the inside nuts. Test the conveyor for belt slippage and repeat this procedure until the belt does not slip.

If the belt still slips and there is no adjustment left on the tensioning rod, a section of the belt can be removed and the tensioning system reset. This will need to be done by a qualified technician.

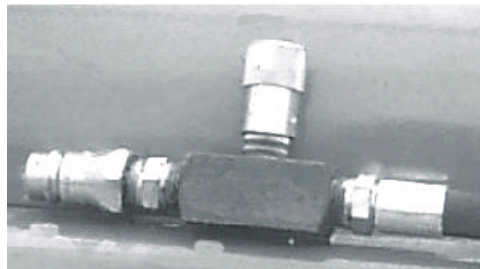
Figure 1.2(d) - Belt Tensioning System



1.3 Field Instructions

For proper operation of the Accelerator, raise the conveyor to the desired location. Engage both the PTO and the hydraulics to turn the auger. Use the flow control valve (Figure 1.3(a)) to set the speed of the auger. To increase the speed, turn the valve clockwise; to decrease the speed, turn the valve counterclockwise. Begin material flow into the intake of the conveyor. As you increase the speed of the conveyor and the amount of the material moving, adjust the speed of the auger to allow the conveyor to run full and at the same time minimize spillage. Continually watch that the material is flowing and that there is no slippage of the conveyor belt.

Figure 1.3(a) - Flow Control Valve



1.4 General Operating Instructions

Watch the conveyor belt to ensure that it is centered on all rollers. If it is not centered, refer to the Pre-operation Instructions for directions on how to center the belt.

The main roller shaft (PTO output) should run between 500 and 600 rpm. **Do not exceed a PTO speed of 600 rpm!**

At no time should the belt be allowed to slip on the main drive roller. If slippage occurs, **IMMEDIATELY** shut down the conveyor, determine where the problem has occurred and correct it.

If the Accelerator belt slips with material in the tube, stop the machine and evenly and slowly re-engage the PTO.

If the Accelerator belt stops due to overfilling of a bin, clear the material from the discharge. Restart the conveyor slowly, making sure the belt does not slip on the drive roller.

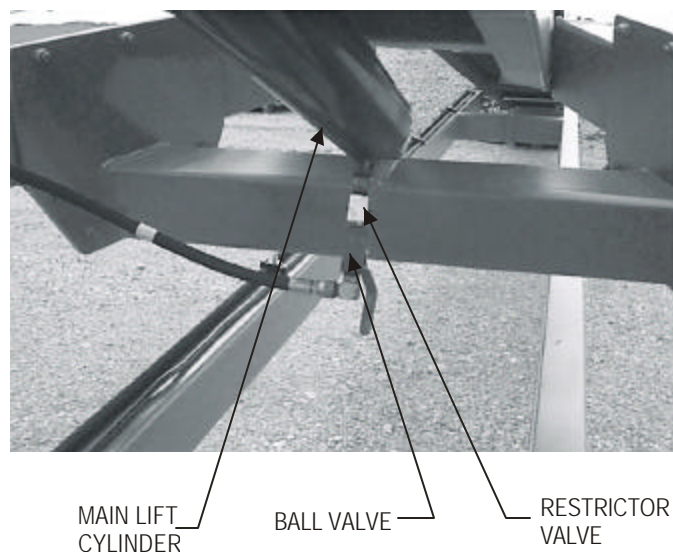
Never transport the conveyor with material in the tube.

Watch for overhead lines. Always lower the conveyor when moving. Maintain a minimum of 10' between the conveyor and overhead lines at all times.

Place the spout of the conveyor 3" above the bin opening. Never rest the spout on the bin opening.

A restrictor valve is used on the main lift cylinder to prevent the cylinder from compressing quickly if a hose fails (Figure 1.4(a)). A ball valve has also been added to prevent the oil flow from lowering the Accelerator into the bin. Always engage the ball valve if the hydraulics have to be removed from the tractor.

Figure 1.4(a) - Cylinder Valves



Stand clear of the conveyor when raising or lowering.

Do not spill or allow oil to come into contact with the belt.

Do not run the conveyor without shields in place.

Keep all nuts, bolts, bearing lock collars, etc. tight at all times.

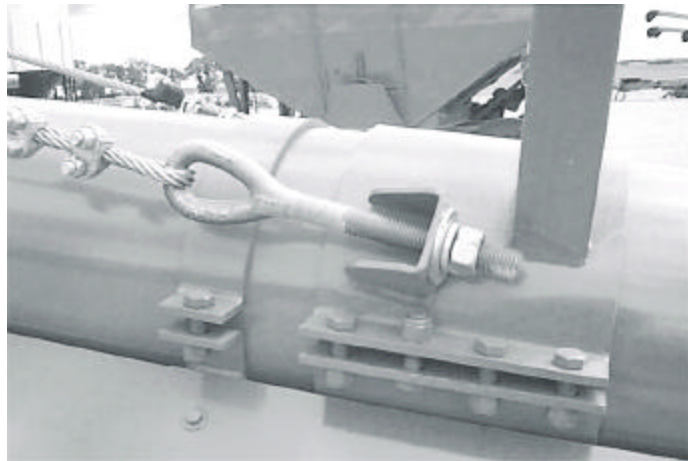
1.5 Cable Adjustment

Adjustment of the cable should be done very carefully. The cables can be adjusted at the four eye bolts (Figure 1.5), making sure to loosen the cable clamps at the top of all trusses before adjusting. When tightening cables, do not tighten more than three revolutions per side before rechecking.

Side to Side Adjustment: Tightening one side more than the other will result in a twisting of the tube. This will limit the capacity of the conveyor as well as cause the belt to bind, reducing the life of the belt. To determine whether or not the conveyor is straight, look up the center of the tube while the conveyor is in the transport position. If the spout is too far to the right, tighten the cables on the left. If the spout is over to the left, tighten the cables on the right.

Up and Down (Horizontal) Adjustment: Proper cable tension will limit the amount of sag in the conveyor and will reduce tube deflection while being loaded and transported. To check the horizontal straightness of the tube, lower the conveyor to the transport position and look up the tube from the intake end. The cables should be tightened evenly so the tube is straight (or has a slight upward shape near the discharge end). Periodically check if the tube is straight, especially before and after transporting the conveyor over long distances.

Figure 1.5 - Cable Tensioner



1.6 Slow Moving Vehicle Sign Placement

The slow moving vehicle sign is to be placed on the left hand side of the machine (Figure 1.6) for transport purposes.

Figure 1.6 - SMV Sign



2.0 Maintenance Instructions

To ensure a long operating life of your Accelerator, follow these maintenance procedures.

- Periodically check all bolts for tightness.
- Periodically inspect belt splice for signs of wear and tear.
- Periodically check belt alignment and adjust as required.
- Grease points as described below.
- Ensure tire air pressure is maintained at rated psi. Fluctuation in the air pressure may result in damage to the tire.

2.1 Grease Locations

	Description	Frequency
1	Intake Assembly - Figure 1.2(a)	Every 8 hours
2	Drive Assembly - Figure 1.2(b)	Every 8 hours
3	Discharge Assembly - Figure 1.2(c)	Every 8 hours
4	Hub Assembly - Figure 2.1(a)	Every 8 hours
5	PTO Shaft - Not shown	Every 8 hours

Figure 2.1(a) - Hub Assembly

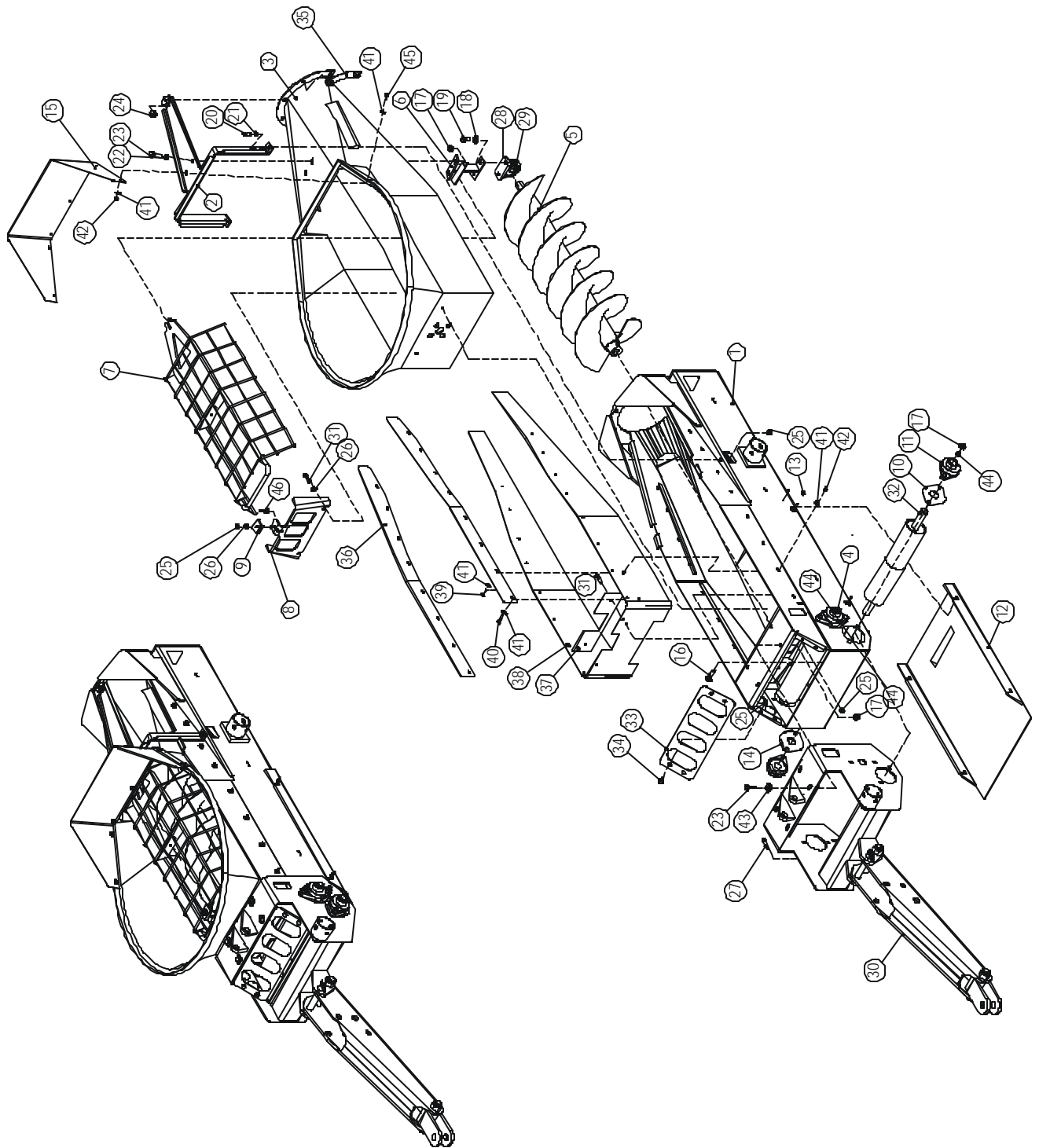


GREASE POINT

3.0 Main Assembly Parts Information

3.1 Intake Assembly (Part No. 50262)

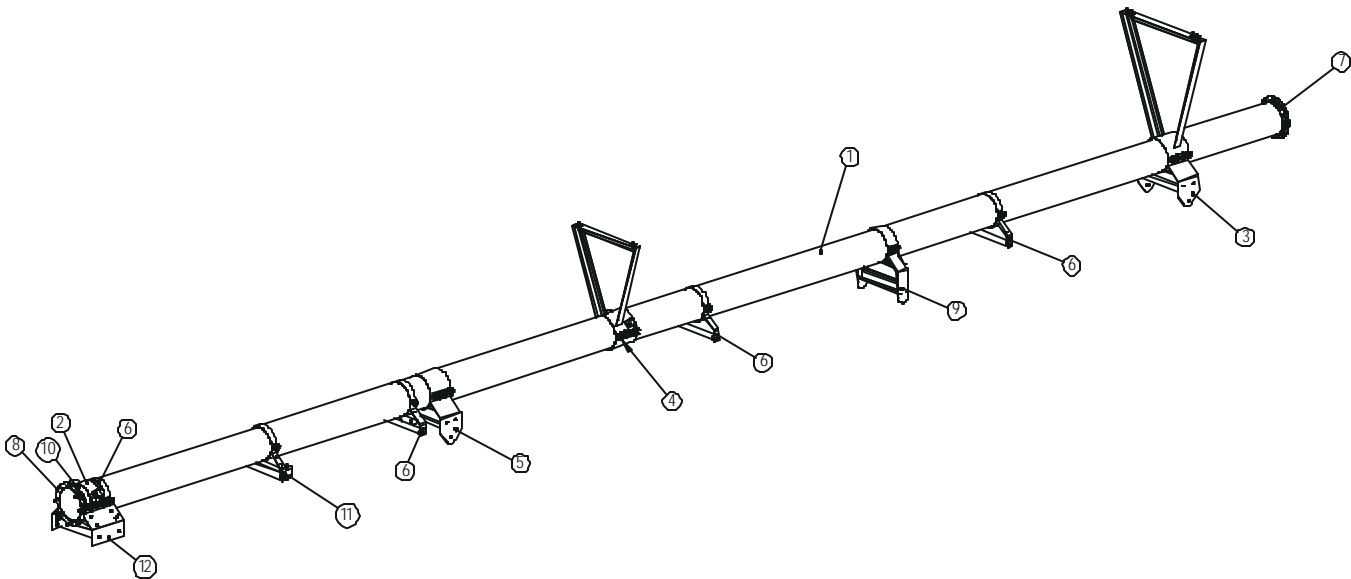
ITEM NO.	PART NO.	DESCRIPTION	QTY.
1	50261	INTAKE,WELDMENT	1
2	E5426	BRACKET,INTAKE,AUGER, SUPPORT	1
3	E5429	HOPPER,INTAKE.PLASTIC	1
4	50106	ROLLER,3-1/2	1
5	50139	AUGER,WELDMENT	1
6	50507	WLDT,HANGER,BEARING	1
7	50509	WLDT,INTAKE GUARD	1
8	E6322	INT,GUARD	1
9	E6343	CHANNEL,GUARD,LOCK	1
10	E4104	PLATE,RETAINING,BEARING	3
11	30449	BEARING,FLANGE,1-1/4	4
12	E5430	TRAY,INTAKE,CLEANOUT	1
13	31164	NUT,HEX,1/4,UNC,GR5,ZP	4
14	E5431	ADJUSTER,INTAKE,BEARING	1
15	E5303	DEFLECTOR,HOPPER	1
16	31009	BOLT,CARR,1/2X2,UNC,GR.5,ZP	8
17	31173	NUT,NYLOCK,1/2,UNC,ZP	14
18	31218	WASHER,LOCK,5/8,ZP	2
19	31701	BOLT,HEX,M14X 25,GR8.8,ZP	2
20	31043	BOLT,HEX,3/8X1,UNC,GR5,ZP	2
21	31319	WASHER,LOCK,3/8,ZP	2
22	31244	WASHER,LOCK,1/2,ZP	2
23	31016	BOLT,HEX,1/2X1-1/2,UNC,GR5,ZP	6
24	31179	NUT,NYLOCK,9/16,UNC,ZP	4
25	31176	NUT,NYLOCK,3/8,UNC,ZP	11
26	31351	WASHER,FLAT,3/8,ZP	3
27	31566	BOLT,SORHEAD,7/16UNCx2",Gr.5,ZP	1
28	30472	BEARING,HOUSING,HEX	1
29	30450	BEARING,HEX,1"	1
30	50348	HITCH,ASSY	1
31	31044	BOLT,HEX,3/8X1-1/2,UNC,GR5,ZP	4
32	50318	ROLLER,3-1/2,CROWNED	1
33	E5455	PLATE,INTAKE,FRONT	1
34	31345	BOLT,HEX,3/8X3/4,UNC,GR5,ZP	4
35	50289	FLANGE,INTAKE,WLDT	2
36	E5462	RETAINER,INTAKE,SKIRTING	2
37	E5456	RETAINER,INTAKE,SKIRTING,REAR	1
38	E5465	SKIRT,INTAKE,LONG	1
39	31029	BOLT,HEX,1/4X1,UNC,GR5,ZP	14
40	31581	BOLT,HEX,1/4X1-1/4,UNC,GR5,ZP	2
41	31237	WASHER,FLAT,1/4,ZP	46
42	31174	NUT,NYLOCK,1/4,UNC,ZP	23
43	31236	WASHER,FLAT,1/2,ZP	4
44	E5819	BUSHING,BEARING,ACC	8
45	31033	BOLT,HEX,1/4X3/4,UNC,GR5,ZP	7
46	31585	BOLT,CARR,3/8X1-1/2,UNC,GR5,ZP	1

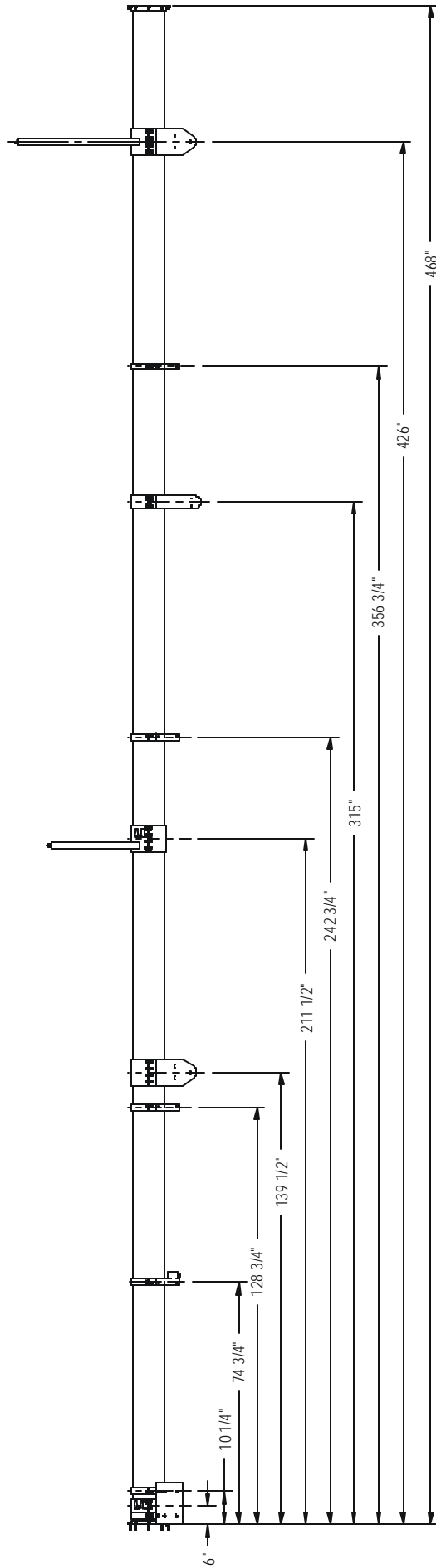


3.2 Stage 1 Assemblies

3.2.1 6510 Stage 1 Assembly (Part No. 50323)

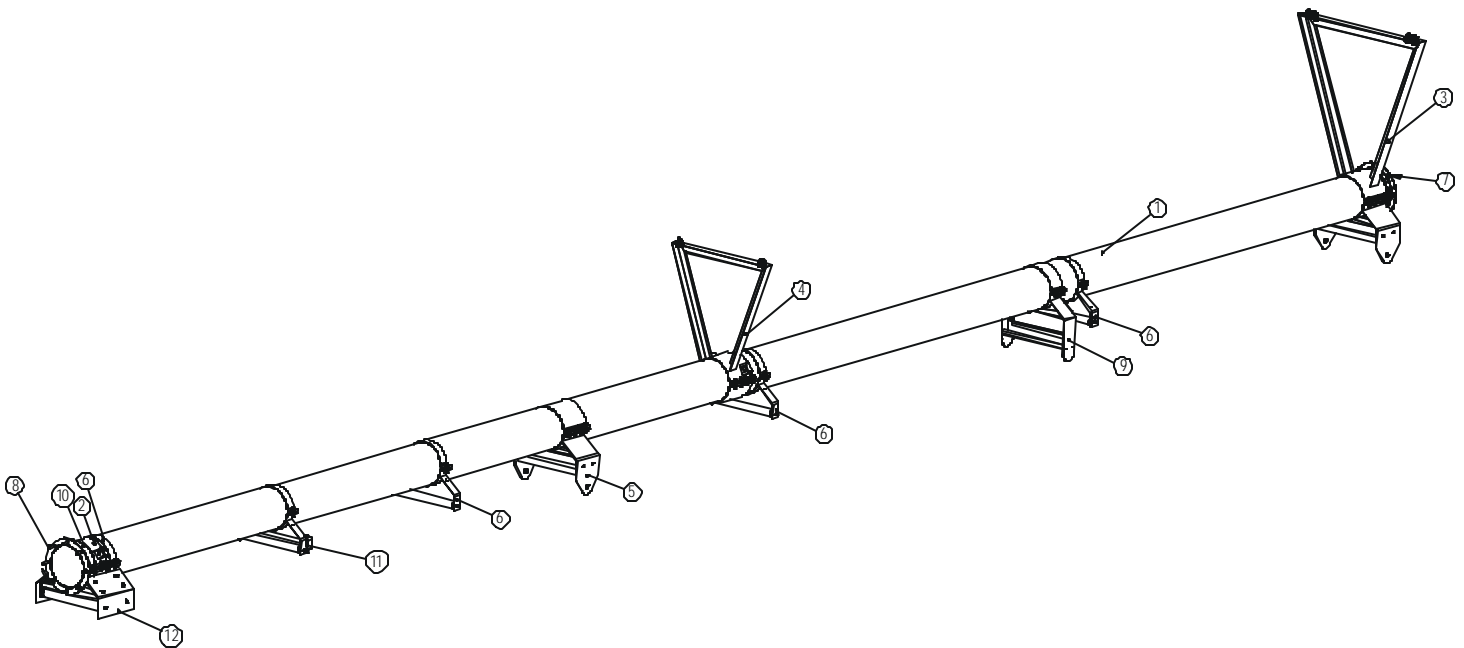
ITEM NO.	PART NO.	DESCRIPTION	QTY.
1	50265	STAGE1, WELDMENT	1
2	50264	CLAMP,CABLE,EYEBOLT,ASSY	1
3	50258	PIVOT,MAIN,ASSEMBLY	1
4	50280	TRUSS,SMALL,ANCHOR,ASSY	1
5	50281	PIVOT,MINOR,ASSEMBLY	1
6	50253	IDLER,RETURN,ASSEMBLY	4
7	31179	NUT,NYLOCK,9/16,UNC,ZP	8
8	31704	BOLT,HEX,9/16X1-3/4,UNC,GR5,ZP	8
9	50283	REST,SCISSOR,ASSEMBLY	1
10	50341	IDLER,RETURN,ASSY,DBL	1
11	50369	IDLER,RETURN,ASSY,TRAINING	1
12	50342	SKIRT,ASSY, SHORT	1

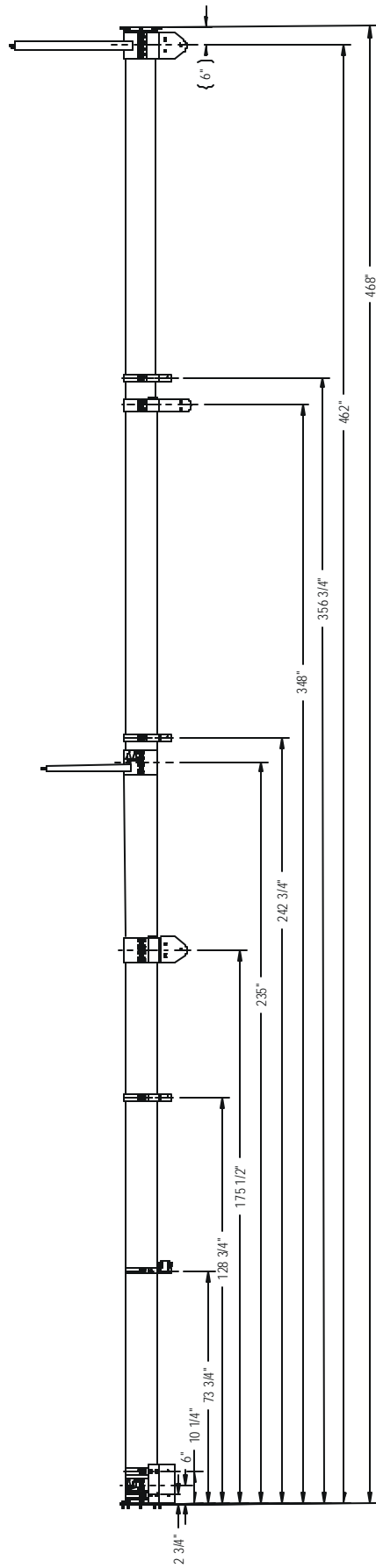




3.2.2 7510 and 8510 Stage 1 Assembly (Part No. 50267)

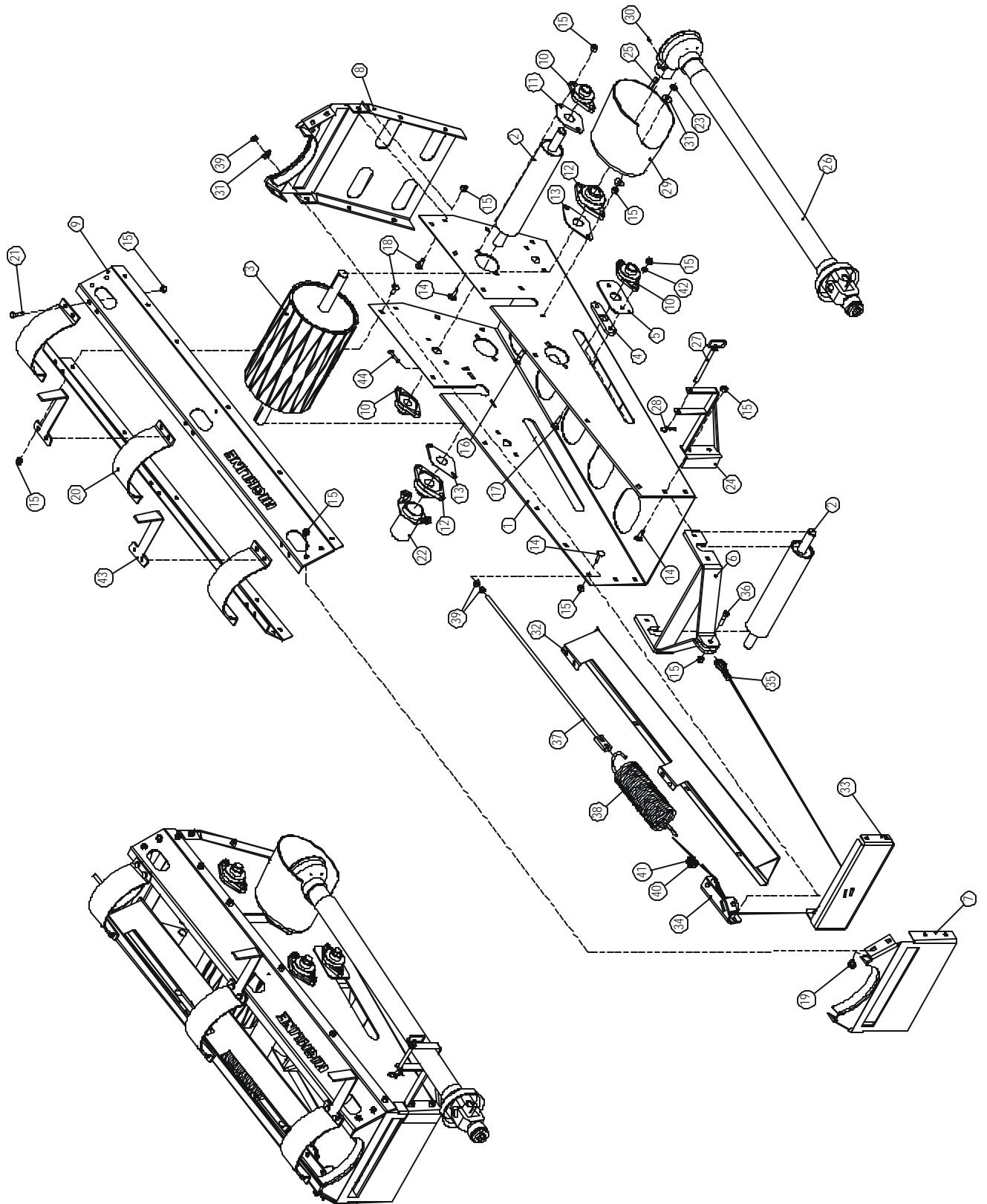
ITEM NO.	PART NO.	DESCRIPTION	QTY.
1	50265	STAGE1, WELDMENT	1
2	50264	CLAMP,CABLE,EYEBOLT,ASSY	1
3	50258	PIVOT,MAIN,ASSEMBLY	1
4	50280	TRUSS,SMALL,ANCHOR,ASSY	1
5	50281	PIVOT,MINOR,ASSEMBLY	1
6	50253	IDLER,RETURN, ASSEMBLY	4
7	31179	NUT,NYLOCK, 9/16,UNC,ZP	8
8	31704	BOLT,HEX,9/16X1-3/4,UNC,GR5,ZP	8
9	50283	REST,SCISSOR,ASSEMBLY	1
10	50341	IDLER,RETURN,ASSY,DBL	1
11	50369	IDLER,RETURN,ASSY,TRAINING	1
12	50342	SKIRT,ASSY, SHORT	1





3.3 Drive Assembly (Part No. 50305)

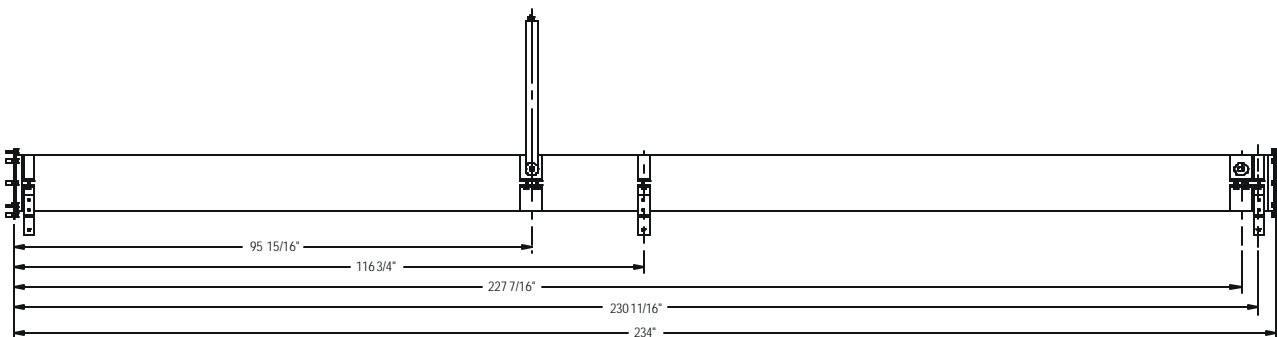
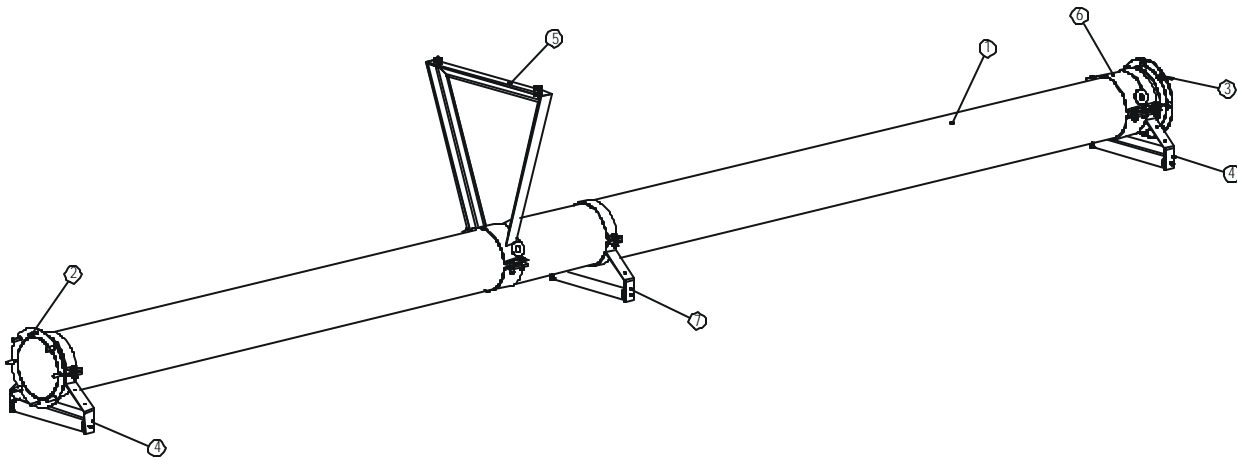
ITEM NO.	PART NO.	DESCRIPTION	QTY.
1	50357	PAN,DRIVE,WLDT	1
2	50106	ROLLER,3-1/2	4
3	50144	ROLLER,DRIVE,VULCANIZED	1
4	E5347	SPACER,DRIVE,TENSIONER	2
5	E5113	PLATE,TAKE-UP,OUTSIDE	2
6	50349	TAKE-UP,WLDT,SHORT	1
7	50288	COVER,FRONT,WLDT	1
8	50287	COVER,REAR,WLDT	1
9	E5114	COVER,DRIVE	2
10	30449	BEARING,FLANGE,1-1/4	8
11	E4104	PLATE,RETAINING,BEARING	3
12	30448	BEARING,FLANGE,1-1/2	2
13	E4227	PLATE,SPACER,ROLLER,DRIVE	2
14	31008	BOLT,CARR,1/2X1-1/2,UNC,GR5,ZP	18
15	31173	NUT,NYLOCK,1/2,UNC,ZP	63
16	31431	BOLT,CARR,1/2X2-1/4,UNC,GR5,ZP	4
17	31009	BOLT,CARR,1/2X2,UNC,GR5,ZP	4
18	31154	BOLT,CARR,1/2X1-1/4,UNC,GR5,ZP	10
19	31434	BOLT,CARR,1/2X1,UNC,GR5,ZP	14
20	E5163	CLAMP,PIPE,10"X4"	3
21	31017	BOLT,HEX,1/2X1-3/4,UNC,GR5,ZP	12
22	50197	GUARD,PTO,ASSY	1
23	30611	NUT,NYLOCK,JAM,1/2,UNC,ZP	4
24	50309	BRKT,PTO,WLDT	1
25	E4182	KEY,3/8X2	1
26	30126	DRV,DL,UJ,35R,540	1
27	92209	PIN,HITCH,1/2X5	1
28	91608	PIN,HAIR,1/8x2-9/16	1
29	E4173	DRV,DL,GUARD,PTO	1
30	30037	SETSCREW,3/8UNCX3/8	1
31	31236	WASHER,FLAT,1/2,ZP	5
32	E5483	PAN,DRIVE,TENSIONER	1
33	50346	BRKT,TENSIONER,BOTTOM,ASSY	1
34	50344	BRKT,TENSIONER,SIDE,ASSY	1
35	E5494	CABLE,TENSIONER	1
36	31070	BOLT,HEX,1/2X2,UNC,GR5,ZP	1
37	50350	ROD,TENSIONER,WLDT	1
38	E5477	SPRING,EXT,3-3/4X16.249	1
39	31163	NUT,HEX,1/2,UNC,GR5,ZP	3
40	92014	CLAMP,CABLE,1/4	2
41	31177	NUT,NYLOCK,5/16,UNC,ZP	4
42	E5819	BUSHING,BEARING,ACC	20
43	E5821	BRACKET,HOSEHOLDER	2
44	31566	BOLT,SQRHEAD,7/16UNCx2",Gr.5,ZP	1



3.4 Stage 2 Assembly

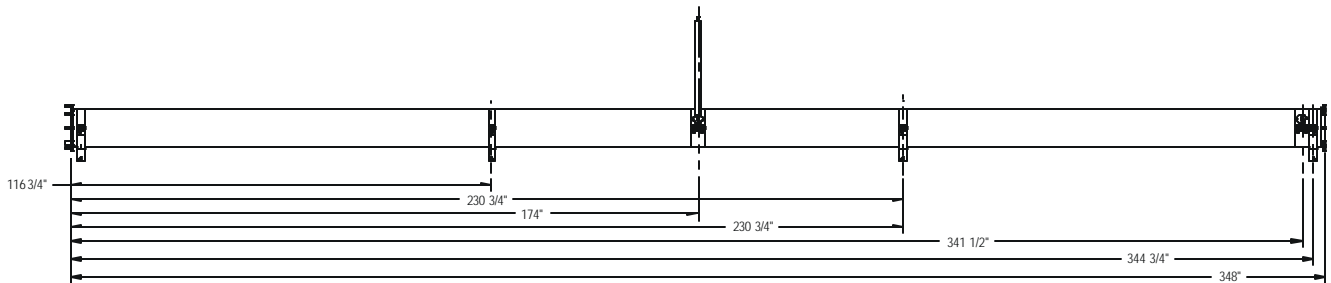
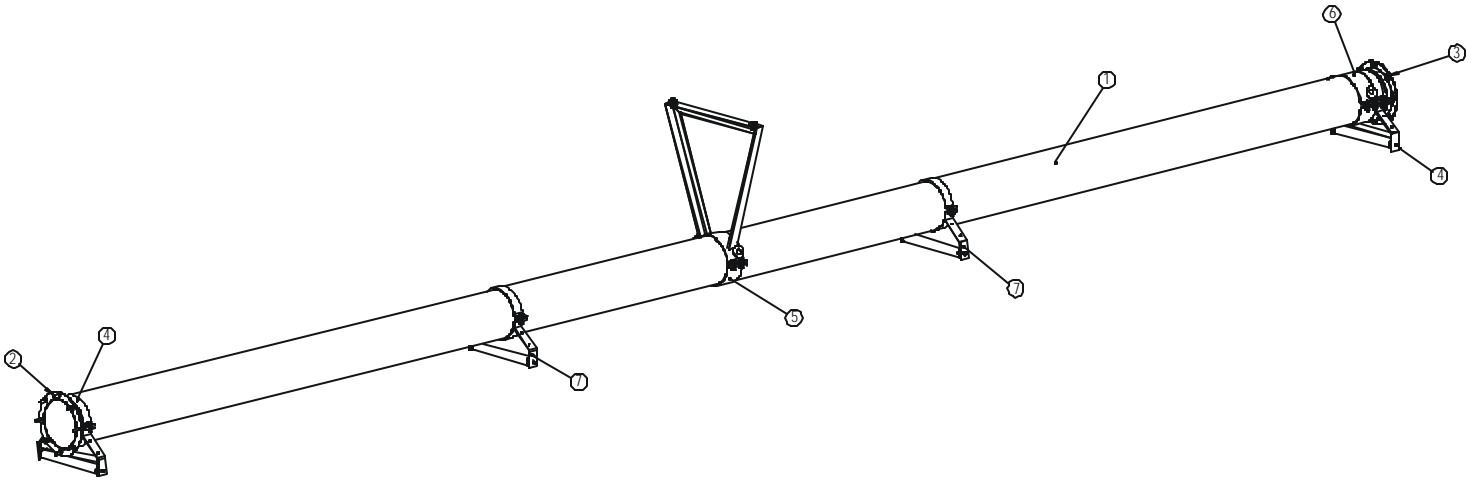
3.4.1 6510 Stage 2 Assembly (Part No. 50321)

ITEM NO.	PART NO.	DESCRIPTION	QTY.
1	50316	STAGE2,WLDT,65'	1
2	31704	BOLT,HEX,9/16X1-3/4,UNC,GR5,ZP	8
3	31179	NUT,NYLOCK,9/16,UNC,ZP	8
4	50341	IDLER,RETURN,ASSY, DBL	2
5	50254	TRUSS&ANCHOR,SMALL, ASSY	1
6	50255	ANCHOR,CABLE,ASSY	1
7	50253	IDLER,RETURN,ASSEMBLY	1



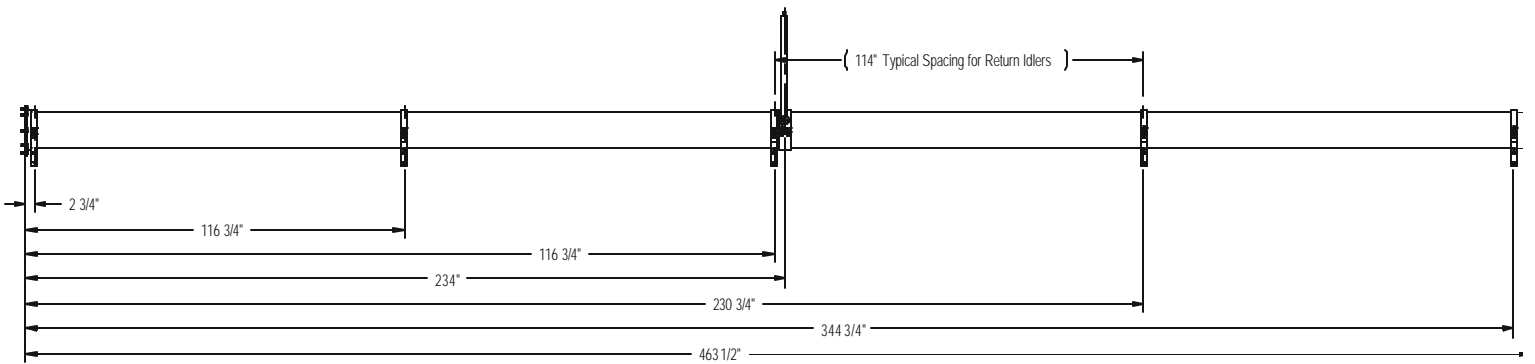
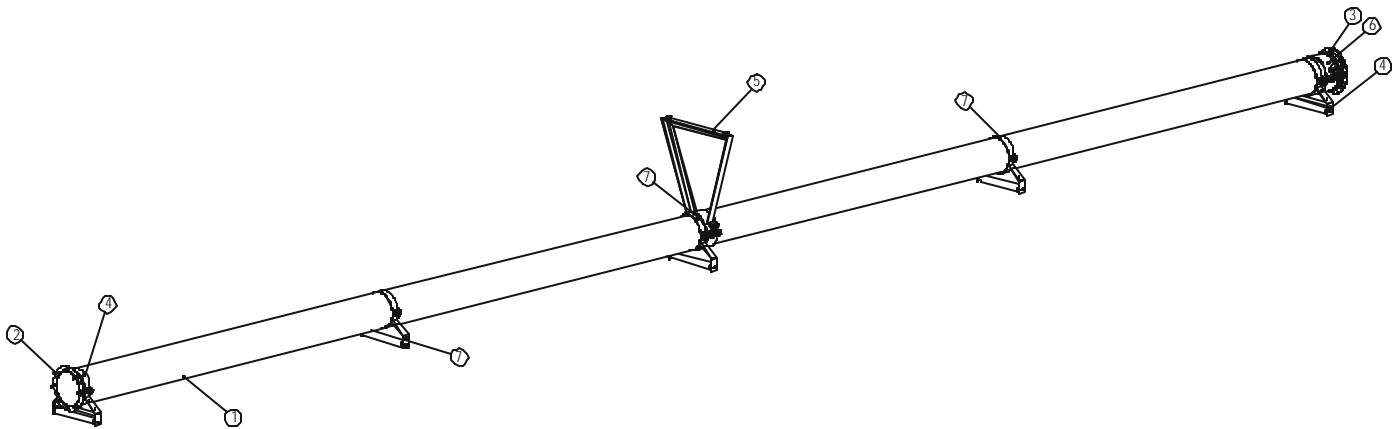
3.4.2 7510 Stage 2 Assembly (Part No. 50320)

ITEM NO.	PART NO.	DESCRIPTION	QTY.
1	50315	STAGE2,WLDT,75'	1
2	31704	BOLT,HEX,9/16X1-3/4,UNC,GR5,ZP	8
3	31179	NUT,NYLOCK,9/16,UNC,ZP	8
4	50341	IDLER,RETURN,ASSY, DBL	2
5	50254	TRUSS&ANCHOR,SMALL, ASSY	1
6	50255	ANCHOR,CABLE,ASSY	1
7	50253	IDLER,RETURN, ASSEMBLY	2



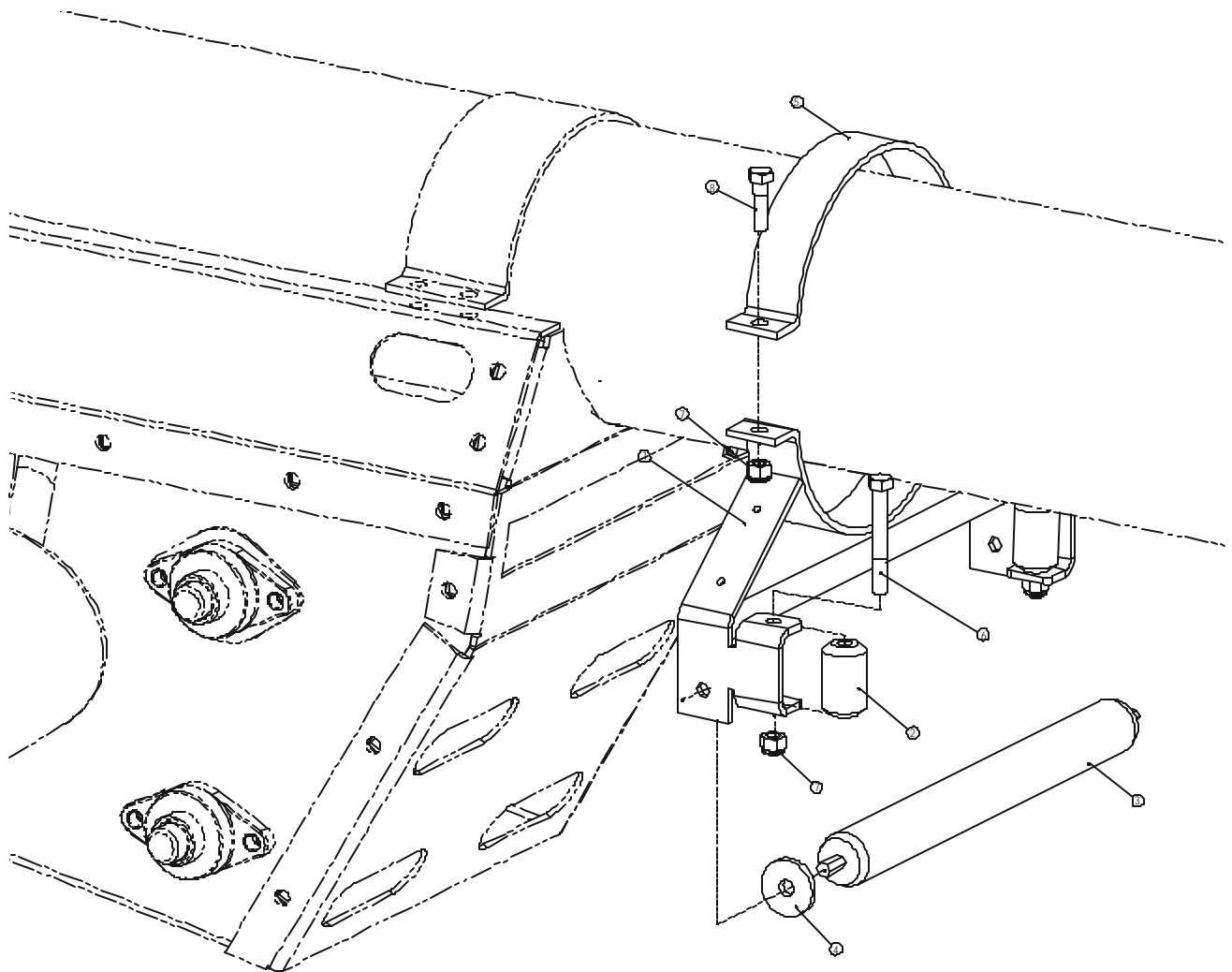
3.4.3 8510 Stage 2 Assembly (Part No. 50268)

ITEM NO.	PART NO.	DESCRIPTION	QTY.
1	50265	STAGE1, WELDMENT	1
2	31704	BOLT,HEX,9/16X1-3/4,UNC,GR5,ZP	8
3	31179	NUT,NYLOCK,9/16,UNC,ZP	8
4	50341	IDLER,RETURN,ASSY,DBL	2
5	50254	TRUSS&ANCHOR,SMALL, ASSY	1
6	50255	ANCHOR,CABLE,ASSY	1
7	50253	IDLER,RETURN, ASSEMBLY	3



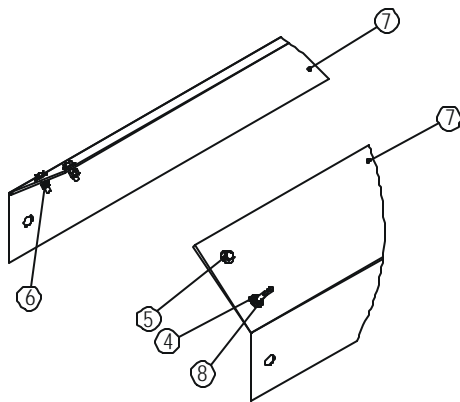
3.5 Training Idler (Part No. 50369)

ITEM NO.	PART NO.	DESCRIPTION	QTY.
1	50371	IDLER,RETURN,WLDT,TRAINING	1
2	E5075	ROLLER,IDLER,TRAINING	2
3	30091	DRV,ROLLER,1.9x17-3/4,7/16 HEX	1
4	E5172	WASHER,IDLER,RETURN	2
5	E5160	CLAMP,PIPE,10" X 2"	1
6	31025	BOLT,HEX,1/2X3-3/4,UNC,G R5,ZP	2
7	31173	NUT,NYLOCK,1/2,UNC,ZP	4
8	31017	BOLT,HEX,1/2X1-3/4,UNC,G R5,ZP	2

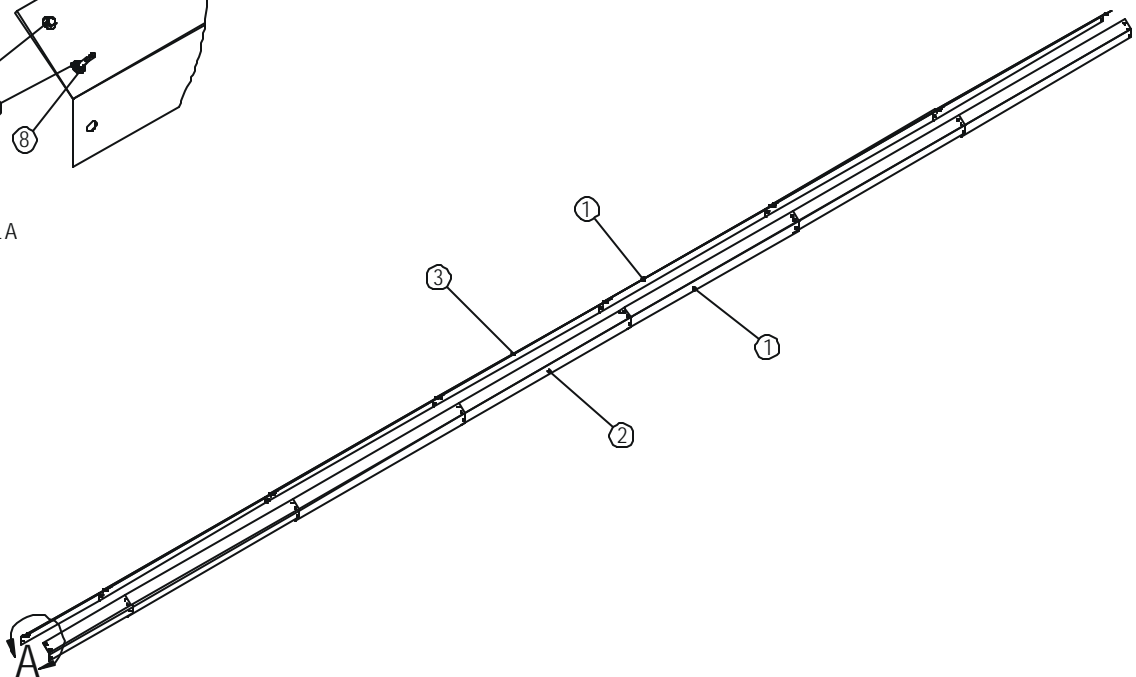


3.6 Skirt Assembly (Part No. 50338,50339,50340)

ITEM NO.	PART NO.	DESCRIPTION	QTY.
1	E5452	SKIRT,STEEL,LONG	8
2	E5159	SKIRT,STEEL,LEFT	1
3	E5174	SKIRT,STEEL,RIGHT	1
4	31237	WASHER,FLAT,1/4,ZP	28
5	31029	BOLT,HEX,1/4X1,UNC,GR5,ZP	27
6	31174	NUT,NYLOCK,1/4,UNC,ZP	28
7	E5478	SKIRT,STEEL,STAGE1	2
8	31030	BOLT,HEX,1/4X2,UNC,GR5,ZP	1

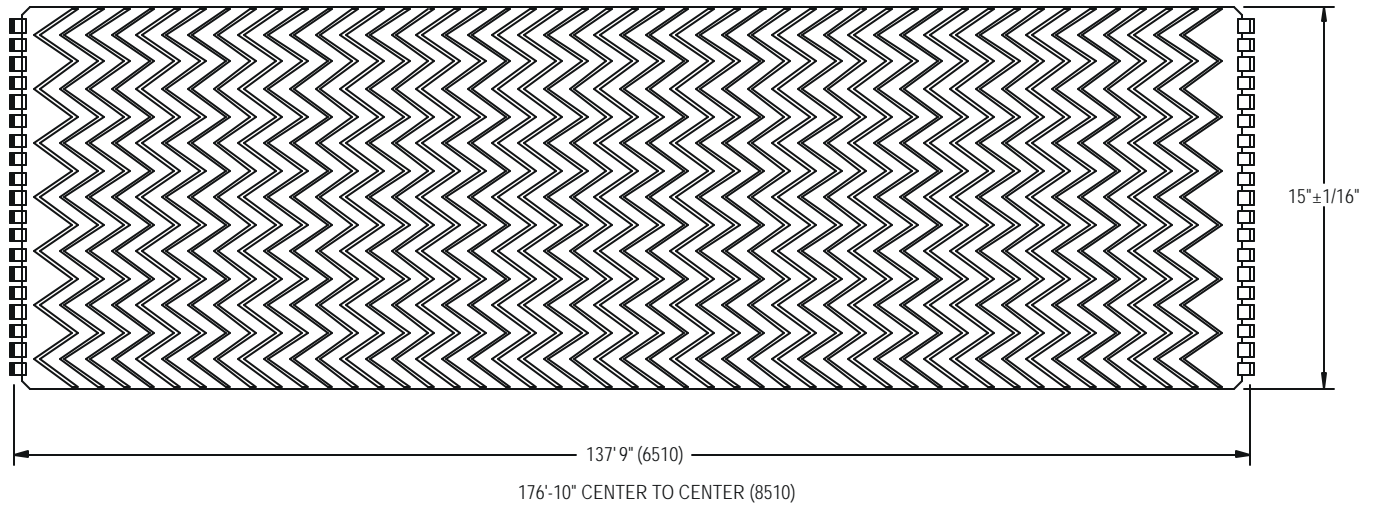


DETAIL A



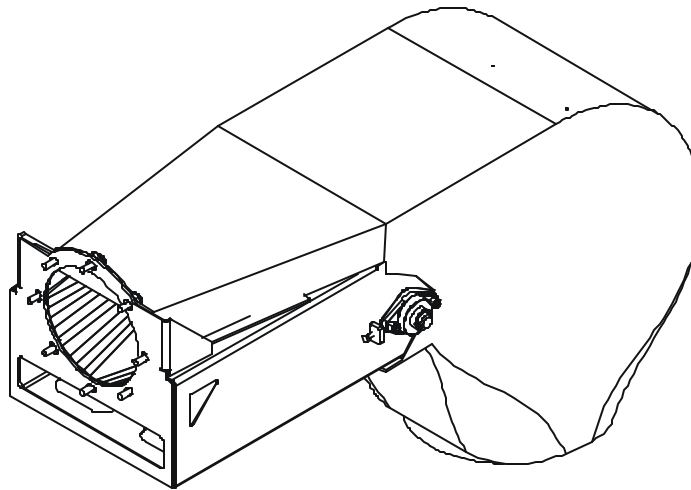
3.7 Belting (Part No. E5447 - 6510, E5445 - 8510)

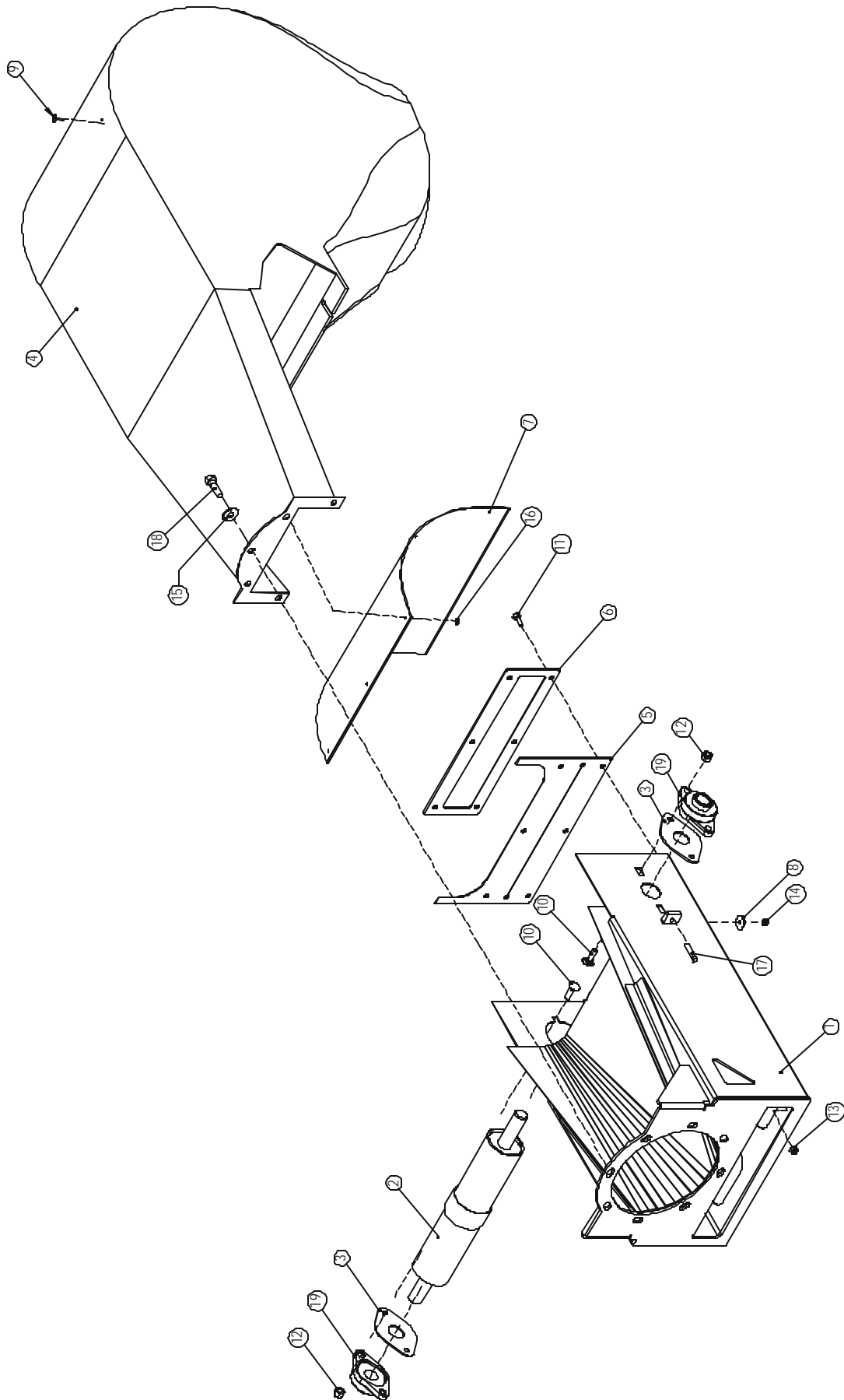
ITEM NO.	PART NO.	DESCRIPTION	QTY.
1	30640	KIT,LACE,SSRS125,15,PIN,WASHER	1
2	30641	LACE,SSRS125,15"	1
3	30642	LACE,PIN,NC-1,100'	1
4	30643	LACE,PIN,WASHER,50	1
5	30644	LACE,SPLICETOOL,RS125,4"	1
6	33020	BELT,15",REPLACEMENT,1'	1



3.8 Discharge Assembly (Part No. 50260)

ITEM NO.	PART NO.	DESCRIPTION	QTY.
1	50259	DISCHARGE,WLDT	1
2	50515	ASSY, ROLLER,ACCEL,CROWN	1
3	E4104	PLATE,RETAINING,BEARING	2
4	E5179	HOOD,DISCHARGE	1
5	E5410	SCRAPER,DISCHARGE	1
6	E5437	INSERT,DISCHARGE,OUTER	1
7	E5438	INSERT,DISCHARGE,HOOD	1
8	30038	WASHER,FLAT,5/16X1-1/4OD	2
9	30040	RIVET,ST,3/16x.815,.625 HEAD	5
10	31008	BOLT,CARR,1/2x1-1/2,UNC,GR5,ZP	4
11	31043	BOLT,HEX,3/8X1,UNC,GR5,ZP	6
12	31173	NUT,NYLOCK,1/2,UNC,ZP	4
13	31176	NUT,NYLOCK,3/8,UNC,ZP	6
14	31177	NUT,NYLOCK,5/16,UNC,ZP	2
15	31242	WASHER,FLAT,9/16,ZP	3
16	31536	WASHER,FLAT,3/16,ZP	5
17	31566	BOLT,SQRHEAD,7/16UNCx2",Gr.5,ZP	1
18	31704	BOLT,HEX,9/16X1-3/4,UNC,GR5,ZP	8
19	31930	BEARING,ROUND,1-1/4",EL	2

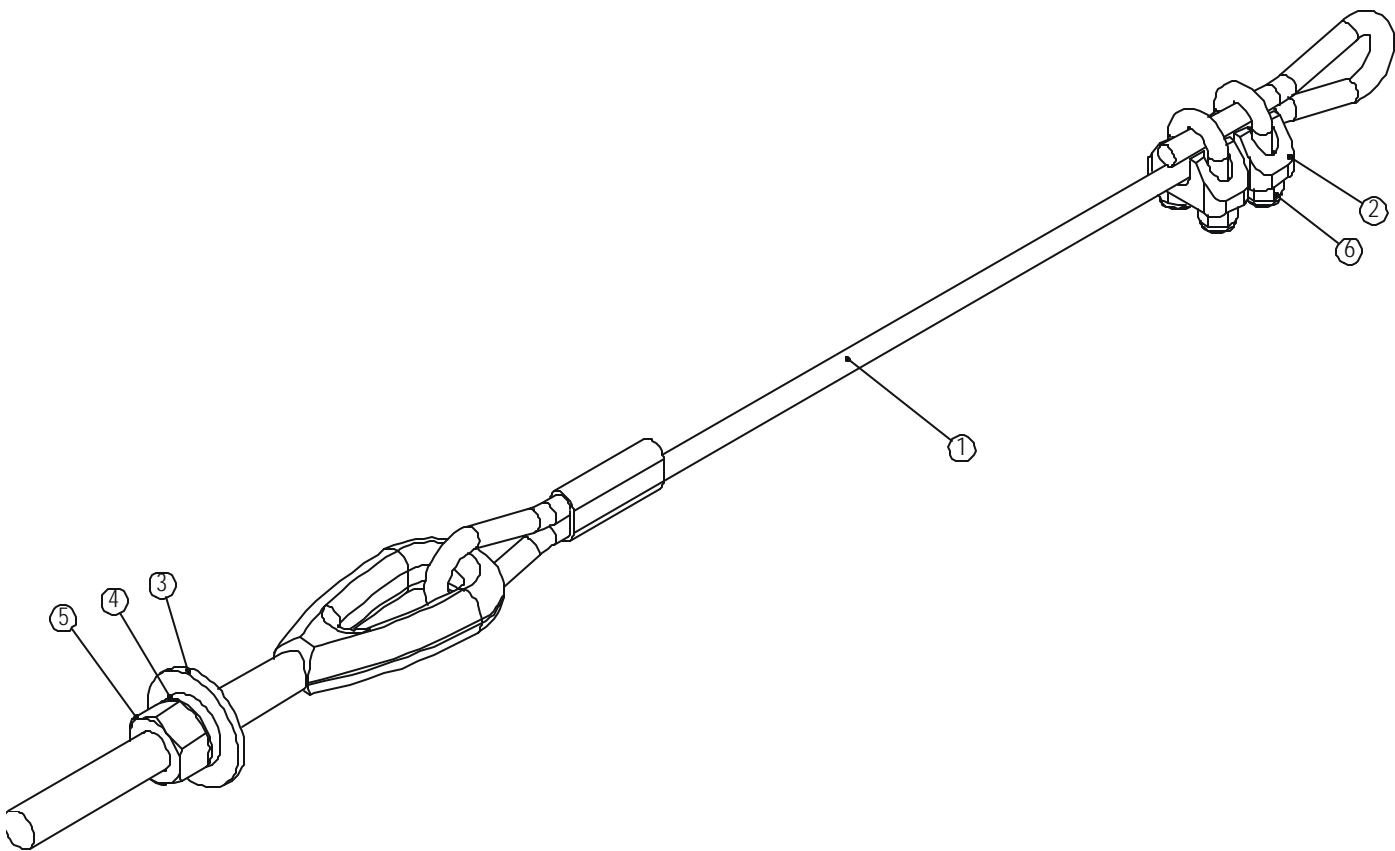




3.9 Wire Rope Assemblies

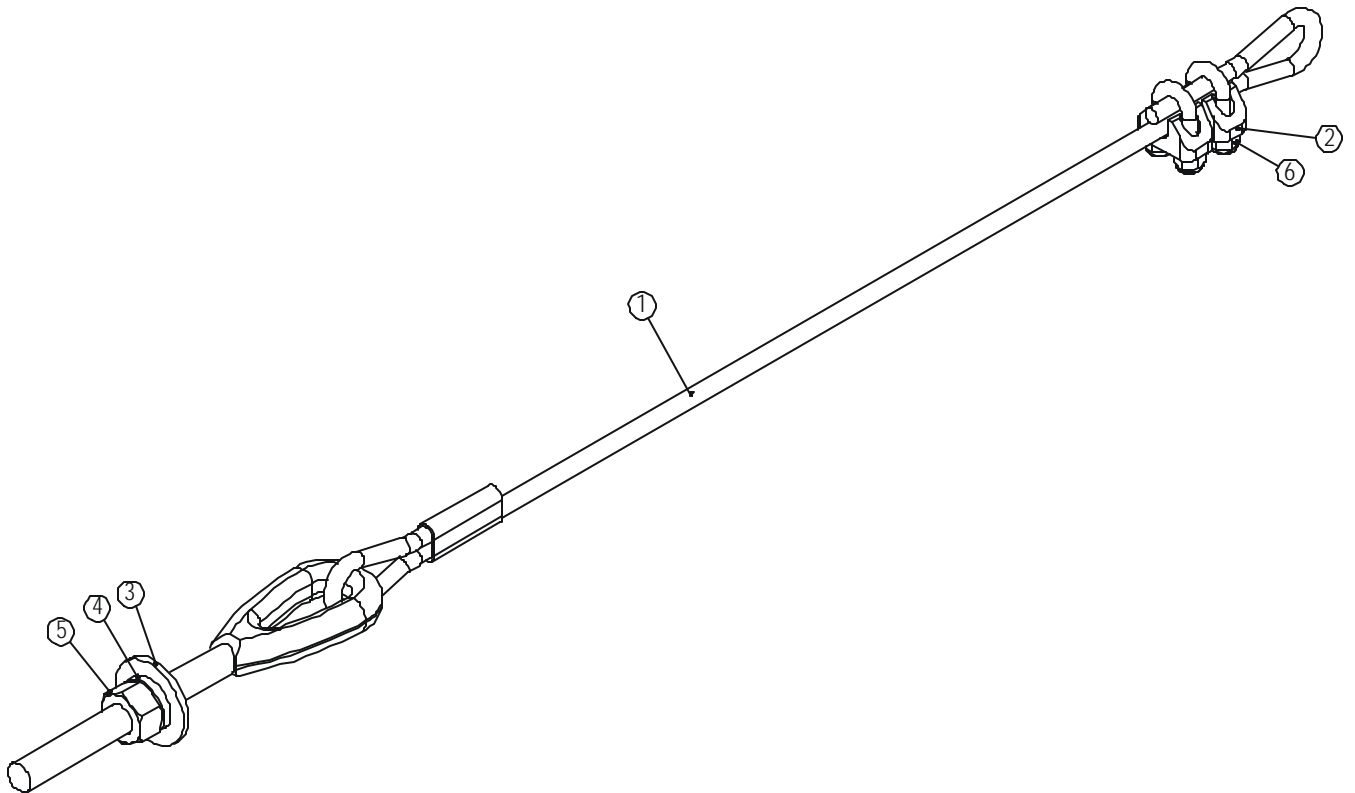
3.9.1 Short Wire Rope Assemblies (Part No. 50330,50328,50326)

ITEM	PART NO.	DESCRIPTION	QTY.
1	E5140	ROPE, WIRE, SHORT, 65'	1
	E5138	ROPE, WIRE, SHORT, 75'	1
	E5133	ROPE, WIRE, SHORT, 85'	1
2	30456	CLAMP, CABLE, 3/8"	2
3	31238	WASHER, FLAT, 3/4, ZP	1
4	31246	WASHER, LOCK, 3/4, ZP	1
5	31167	NUT, HEX, 3/4, UNC, GR5, ZP	1
6	31176	NUT, NYLOCK, 3/8, UNC, ZP	4



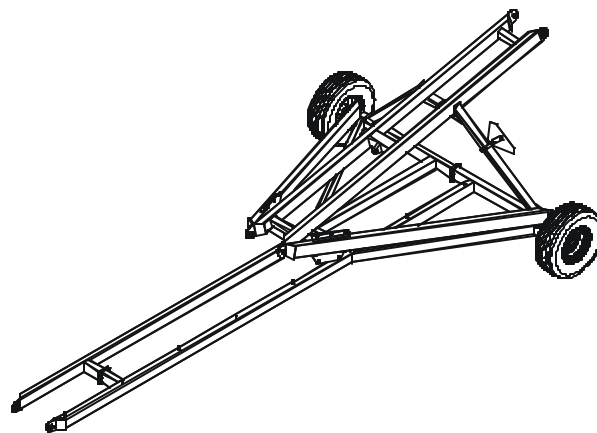
3.9.2 Long Wire Rope Assemblies (Part No. 50331,50329,50327)

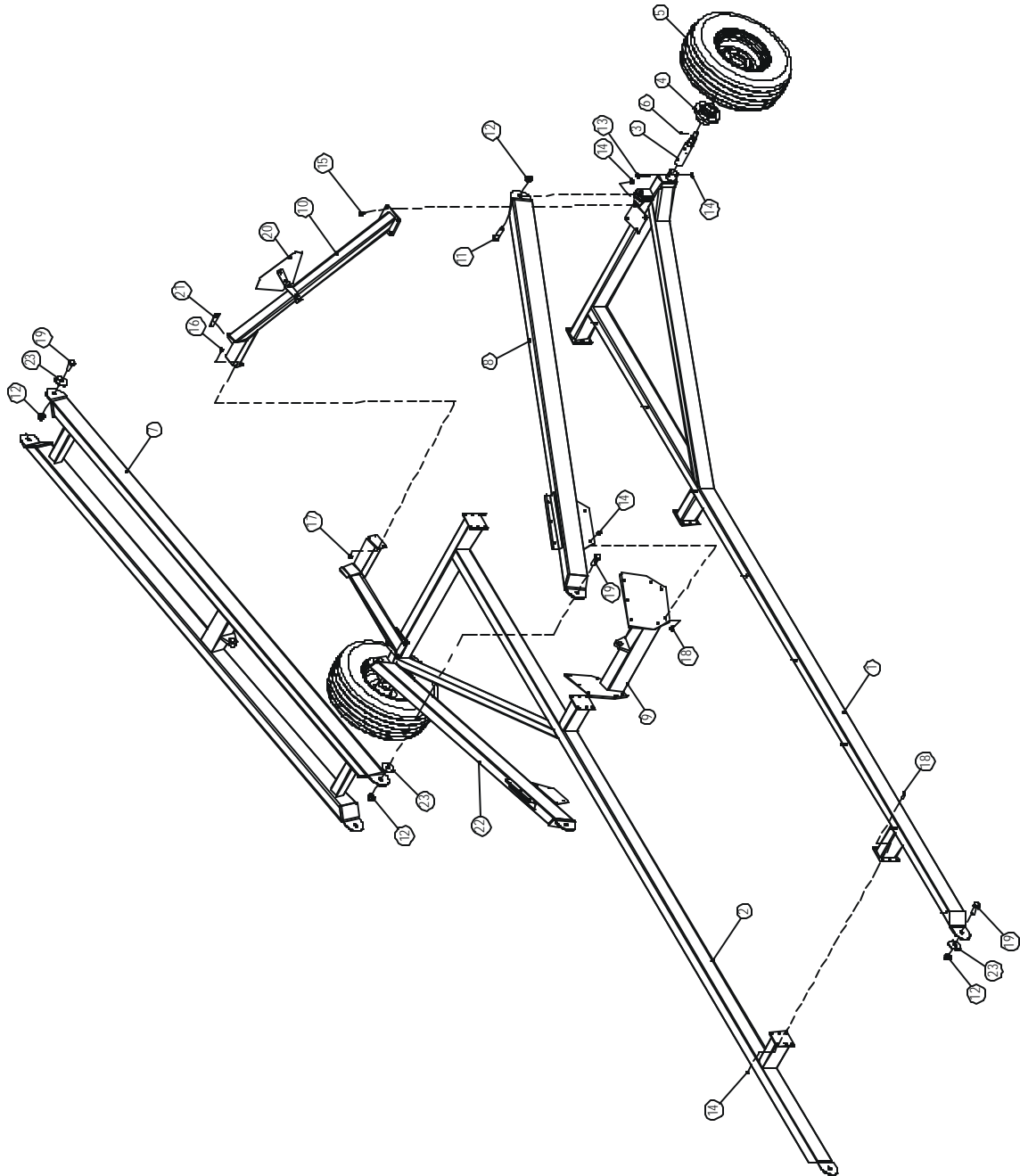
ITEM	PART NO.	DESCRIPTION	QTY.
1	E5141	ROPE, WIRE, LONG, 65'	1
	E5139	ROPE, WIRE, LONG, 75'	1
	E5134	ROPE, WIRE, LONG, 85'	1
2	30456	CLAMP, CABLE, 3/8"	2
3	31238	WASHER, FLAT, 3/4, ZP	1
4	31246	WASHER, LOCK, 3/4, ZP	1
5	31167	NUT, HEX, 3/4, UNC, GR5, ZP	1
6	31176	NUT, NYLOCK, 3/8, UNC, ZP	4



3.10 Frame & Suspension Assembly (Part No. 50272)

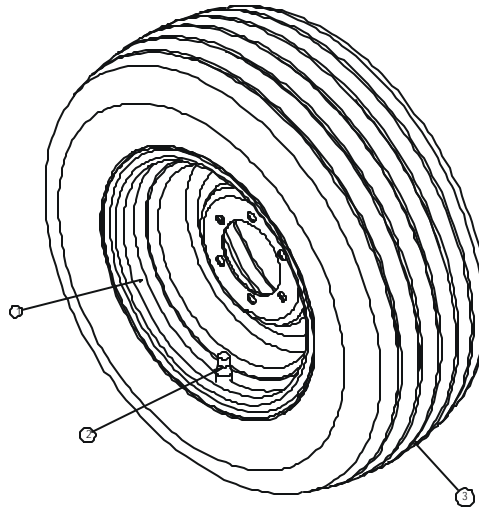
ITEM NO.	PART NO.	DESCRIPTION	QTY.
1	50270	AXLE,WELDMENT,RIGHT	1
2	50271	AXLE,WELDMENT,LEFT	1
3	E4187	SUSP,SPINDLE,S614	2
4	45228	SUSP,HUB,H614,5000LBS	2
5	49089	WHEEL,COMPLETE,BP,OFF-WHITE	2
6	31183	PIN,COTTER,3/16X2	2
7	50273	SUPPORT,FRAME,UPPER,WLDT	1
8	50286	SUPPORT,FRAME,LOWER,WLDT,L	1
9	50275	SUPPORT,FRAME,MIDDLE,WLDT	1
10	50276	FRAME,REST,WELDMENT	2
11	31449	BOLT,HEX,1X3-1/2,UNC,GR8,ZP	2
12	31172	NUT,NYLOCK,1,UNC,ZP	8
13	31024	BOLT,HEX,1/2X3-1/2,UNC,GR8,ZP	2
14	31173	NUT,NYLOCK,1/2,UNC,ZP	42
15	31332	BOLT,HEX,1/2X1-1/4,UNC,GR5,ZP	8
16	31043	BOLT,HEX,3/8X1,UNC,GR5,ZP	4
17	31176	NUT,NYLOCK,3/8,UNC,ZP	4
18	31016	BOLT,HEX,1/2X1-1/2,UNC,GR5,ZP	32
19	31470	BOLT,HEX,1X2-1/2,UNC,GR5,ZP	6
20	50310	SIGN,SMV,COMPLETE	1
21	50284	KIT,SERIAL NUMBER	1
22	50274	SUPPORT,FRAME,LOWER,WLDT,R	1
23	E5416	SPACER,FRAME,SUPPORT,UPPER	6





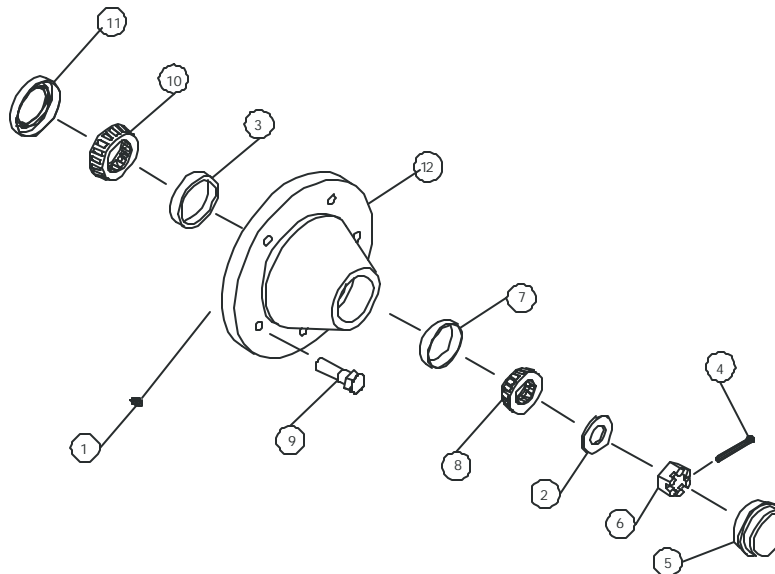
3.10.1 Wheel Assembly (Part No. 49089)

ITEM	PART NO.	DESCRIPTION	QTY
1	45223	SUSP, WHEEL, 15 X 9LB, 1.12 OFF, 6 BOLT	1
2	91048	SUSP, STEM, VALVE, TR415	1
3	45222	SUSP, TIRE, 11L x 15FI	1



3.10.2 Hub Assembly (Part No. 45228)

ITEM NO.	PART NO.	DESCRIPTION	QTY.
1	30207	ZERK, 1/4-28, STRAIGHT	1
2	30223	WASHER, FLAT, 1IDX2ODX.2385	1
3	30226	DRV, BRG, RACE, INNER, 1.781	1
4	31183	PIN, COTTER, 3/16X2	1
5	32296	CAP, DUST	1
6	32297	NUT, SLOTTED, 1-14, UNF	1
7	32299	BRG, RACE, OUTER	1
8	32300	BEARING, OUTER	1
9	32301	SUSP, BOLT, WHEEL, 9/16X1-1/4	6
10	32305	BEARING, INNER	1
11	32306	SEAL, GREASE	1
12	32312	HUB, H614	1

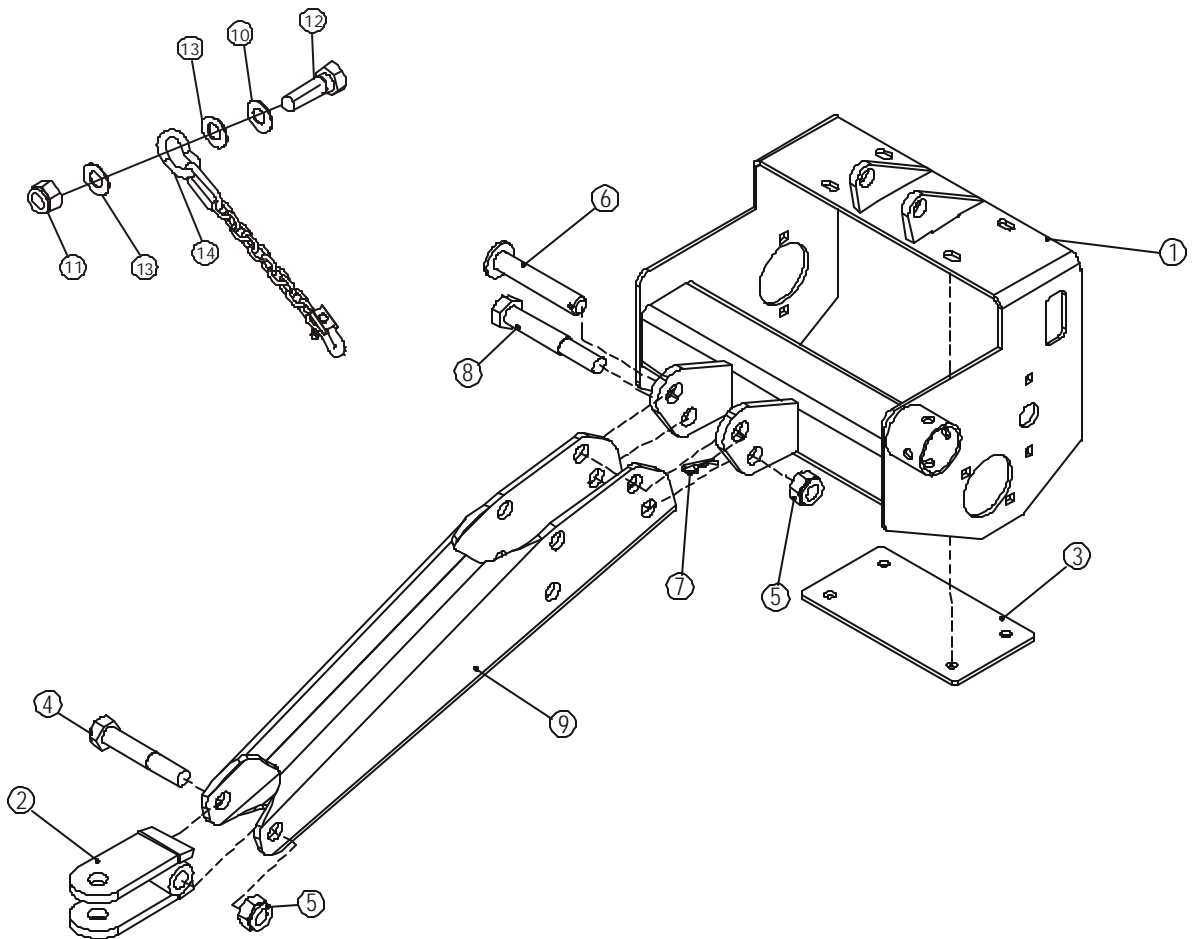


3.11 Hitch Assembly (Part No. 50348)

ITEM NO.	PART NO.	DESCRIPTION	QTY.
1	50347	HITCH,WLDT	1
2	50122	TONGUE,HITCH	1
3	E5127	SPACER,HITCH	1
4	31473	BOLT,HEX,1X5-1/2,UNC,G R5,ZP	1
5	31172	NUT,NYLOCK,1,UNC,ZP	2
6	50176	PIN,1X5-15/16	1
7	91608	PIN, HAIR, 1/8x2-9/16	1
8	31156	BOLT,HEX,1X6-1/2,UNC,G R5,ZP	1
9	50355	EXTENSION,HITCH,WLDT,DUAL	1

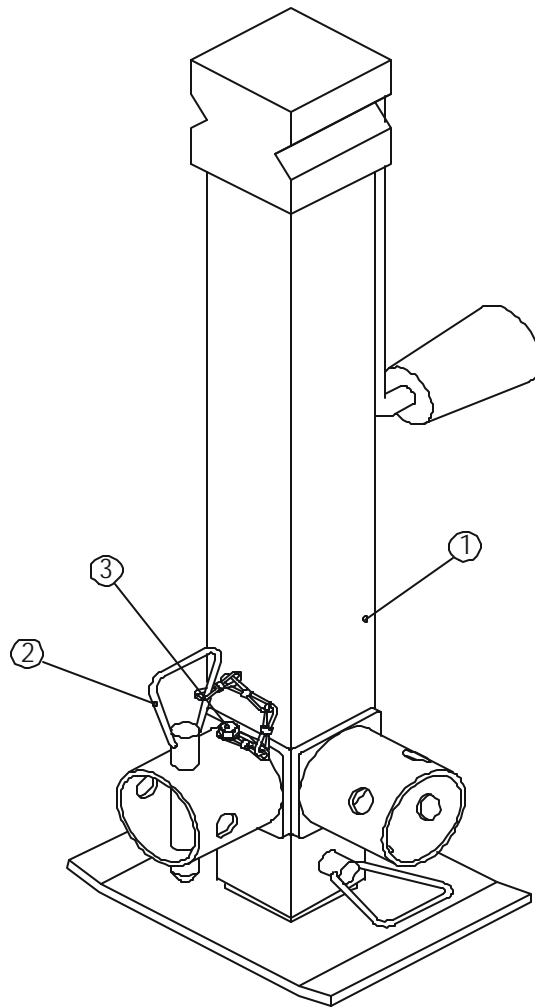
Optional Safety Chain

ITEM NO.	PART NO.	DESCRIPTION	QTY.
10	31243	WASHER,LOCK,1,ZP	1
11	31162	NUT,HEX,1,UNC,GR5,ZP	1
12	31471	1"X3" HEX BOLT, UNC,GR5	1
13	31235	1" FLAT WASHER	2
14	31590	CHAIN,SAFETY,ASAE,10100LB,5'4"	1



3.12 Jack Assembly (Part No. 50363)

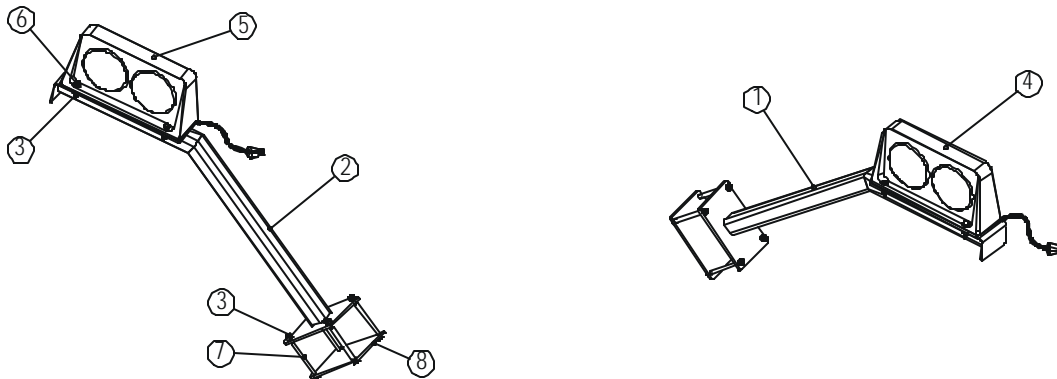
ITEM NO.	PART NO.	DESCRIPTION	QTY.
1	50356	JACK,DUAL,WLDT	1
2	30446	CHAIN&PIN,JACK	1
3	30294	SCREW,TEK,1/4X1	1



3.13 Light Kit Assembly (Part No. 50313)

ITEM NO.	PART NO.	DESCRIPTION	QTY.
1	50300	LEG WLDT,L,LIGHT	1
2	50299	LEG WLDT,R,LIGHT	1
3	31174	NUT,NYLOCK,1/4,UNC,ZP	16
4	30526	ELEC,LIGHT,RED&AMBER,LEFT	1
5	30527	ELEC,LIGHT,RED&AMBER,RIGHT	1
6	31581	BOLT,HEX,1/4X1-1/4,UNC,GR5,ZP	8
7	31587	BOLT,HEX,1/4X4,UNC,GR5,ZP	8
8	E5135	PLATE,LIGHT-KIT,BASE	2
9	50304 *	ELEC_HARNESS,LIGHT,ACC	1

* NOT SHOWN



3.14 Decal Kit (Part No. 50294,50292,50180)

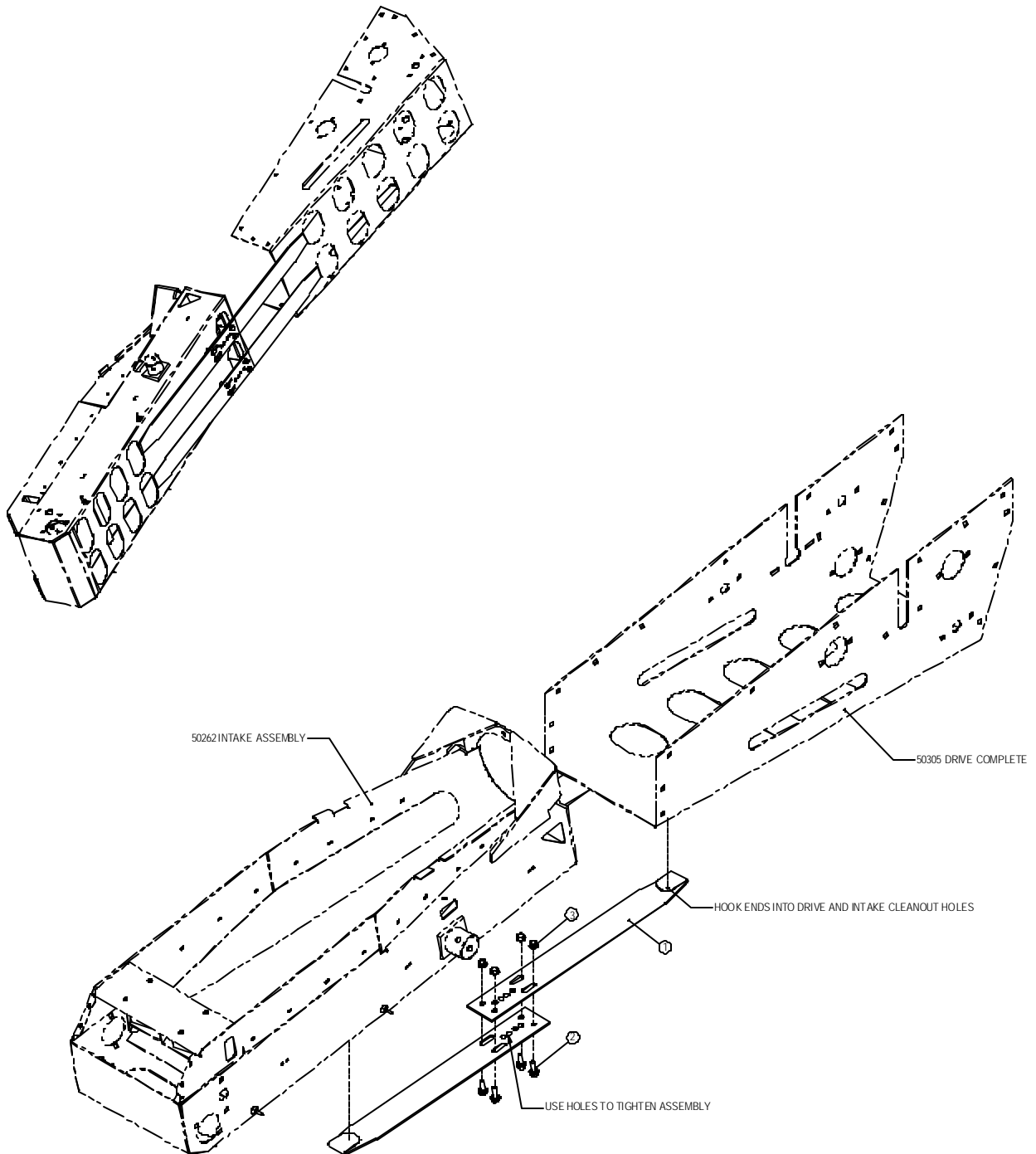
ITEM	PART NO.	DESCRIPTION	QTY.
1	92562	DECAL, WARNING, HITCH, JACK	2
2	30271	DECAL, DANGER, ROTATING DRIVE	1
3	E5145	DECAL, 6510	2
	E5144	DECAL, 7510	2
	E4209	DECAL, 8510	2
4	E5464	DECAL, ACC. XTRA	2
5	92579	DECAL, HIGHLINE, 4 x 30	2
6	E5198	DECAL, PINSTRIPE, CONV. 17'	2
7	E5102	DECAL, RED/WHITE, REFLECTOR, 2 x 72	1
8	E5190	DECAL, LICENSED BY DARMANI	1
9	E4171	DECAL, CAUTION, READ	1
10	E4170	DECAL, DANGER, ELECTROCUTION	1
11	E5309	DECAL, JACK, TRANSPORT	1
12	E5310	DECAL, JACK, ELEVATED	1
13	E5311	DECAL, HITCH, POSITION	1
14	E5325	DECAL, AUGER, ACC.	2
15	E5339	DECAL, DAMAGE, STRUCTURAL	1
*16	E3278	DECAL, CAUTION, CABLE, SIDE	1
*17	E3279	DECAL, CAUTION, CABLE, FRONT	1
18	E6051	DECAL, T. TRANSPORT, DO NOT LIFT	1

* Not Shown



3.15 Strap Assembly (Part No. 50368)

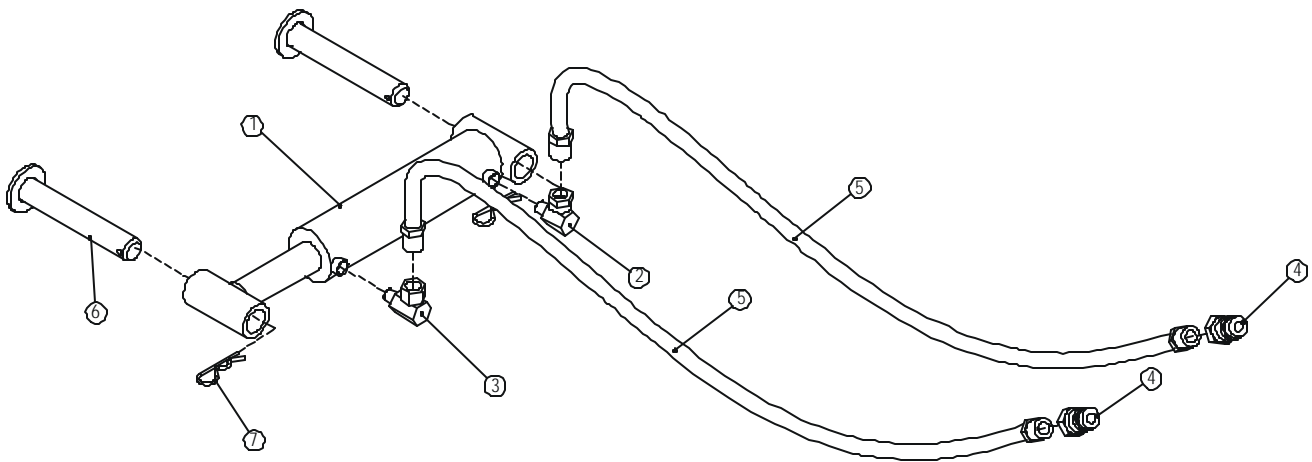
ITEM NO.	PART NO.	DESCRIPTION	QTY.
1	E5338	STRAP,ACC	4
2	31416	BOLT,WHIZ-LOK,1/2X1-1/2	8
3	31417	NUT,WHIZ-LOK,1/2	8



4.0 Hydraulic Parts Information

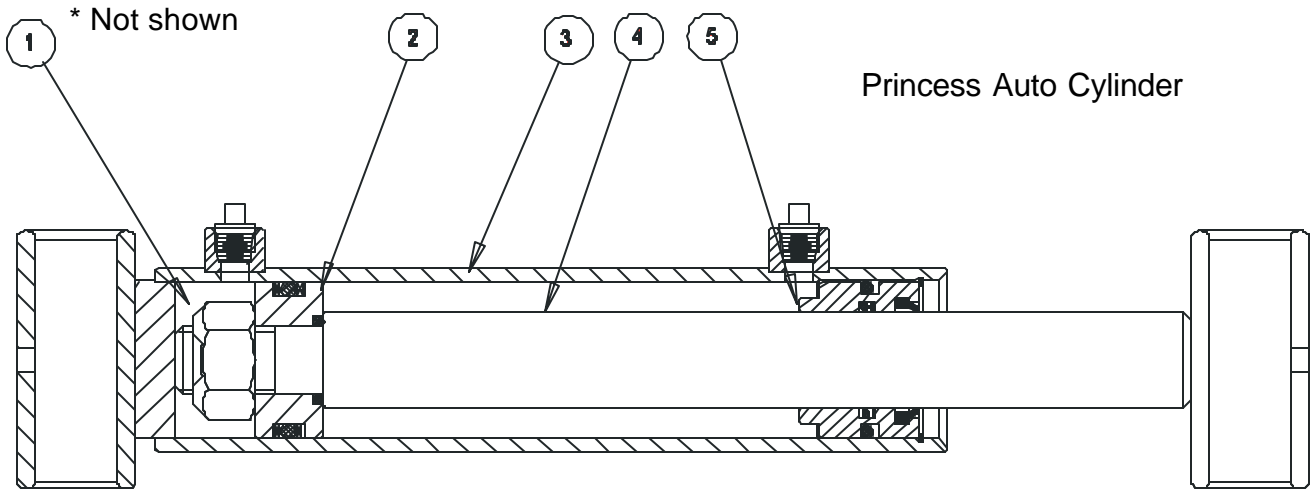
4.1 Hitch Cylinder Assembly (Part No. 50175)

ITEM NO.	PART NO.	DESCRIPTION	QTY.
1	30088	HYD,CYL,2X6,CONVEYOR	1
2	31905	HYD,FIT,ORIFACE,.051,4MP-6FPX90	1
3	30500	HYD,FIT,ELBOW,4MP-6FPX90	1
4	30209	HYD,FIT,PIONEER,MALE,8FP	2
5	30515	HYD,HOSE,3/8X96,6MP-8MP	2
6	50176	PIN,1X5-15/16	2
7	91608	PIN, HAIR, 1/8x2-9/16	2

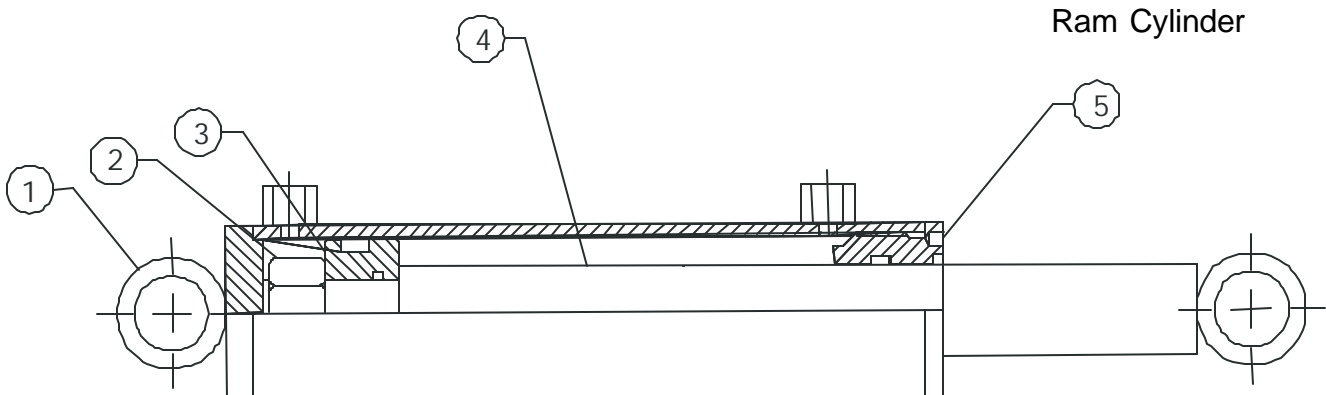


4.1.1 2x6 Cylinder (Part No. 30088)

ITEM	PART NO.	DESCRIPTION	QTY
1	31909	NUT, UNITORQ, .875 - 14 UNF	1
2	31910	HYD, CYL, PISTON, 2.00X.875	1
3	31911	HYD, CYL, TUBE, 2006, HIGHLINE	1
4	31912	HYD, CYL, SHAFT, 2006, HIGHLINE	1
5	31913	HYD, CYL, HEAD, 2.00X1.25	1
*6	31914	HYD, CYL, SEAL KIT, PAL, 2.00X1.25X.875	1



ITEM NO.	PART NO.	DESCRIPTION	QTY.
1	30645	HYD,CYL,BARREL	1
2	30646	HYD,CYL,ROD,NUT	1
3	30647	HYD,CYL,PISTON,2.00	1
4	30648	HYD,CYL,SHAFT,1.25	1
5	30649	HYD,CYL,GLAND	1
6	30650	HYD,CYL,SEALKIT,RAM,2.00X1.25	1



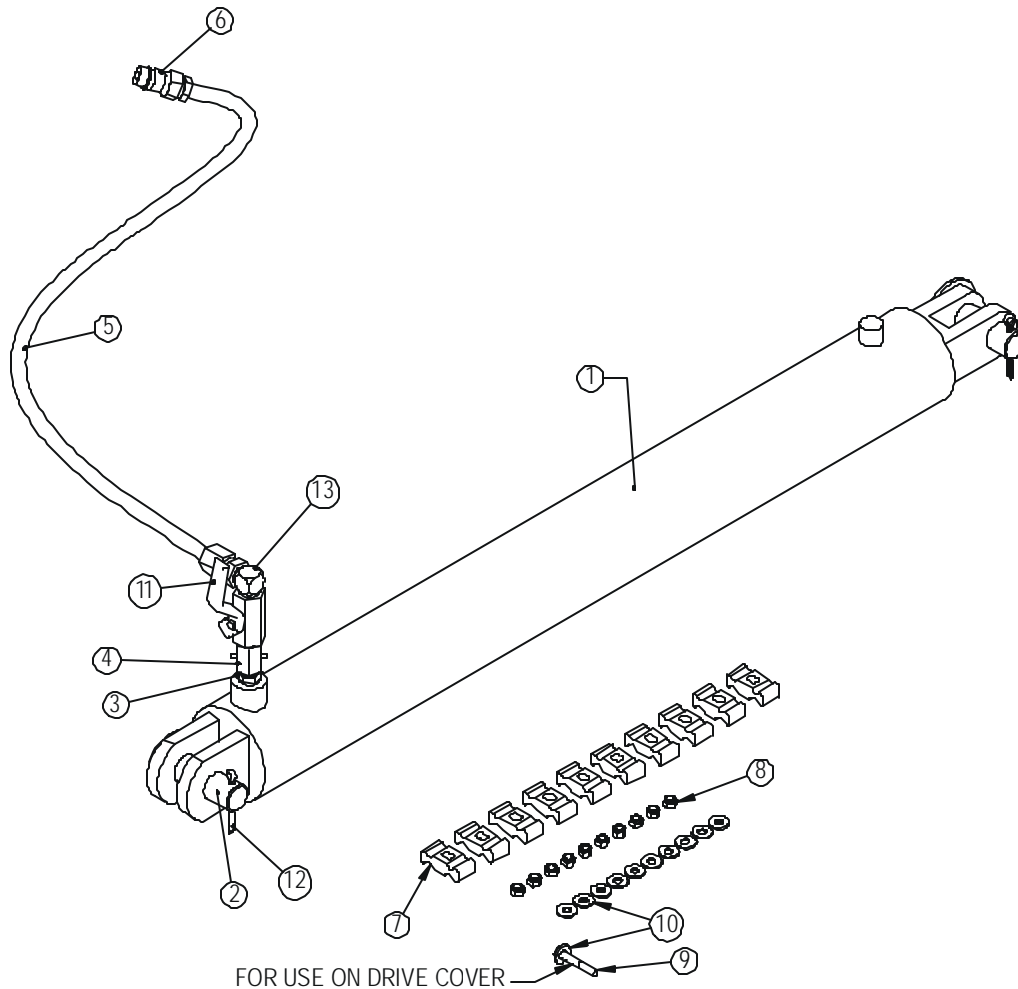
4.2 Main Lift Cylinder Assembly

6510 (Part No. 50311)

ITEM NO.	PART NO.	DESCRIPTION	QTY.
1	30086	HYD,CYLINDER,4X36,CONVEYOR	1
2	50278	PIN,CYL,LIFT, WLDT	2
3	32082	HYD,FIT,ADAPTOR,8MP-8MP	1
4	32107	HYD,FIT,THROTTLE,8MP-8FP	1
5	30605	HYD,HOSE,3/8X610,8MP-8FJX	1
6	30209	HYD,FIT,PIONEER,MALE,8FP	1
7	30210	HYD,CLAMP,HOSE,1/2	10
8	31177	NUT,NYLOCK,5/16,UNC,ZP	10
9	31453	BOLT,HEX,5/16X2,UNC,GR5,ZP	1
10	31239	WASHER,FLAT,5/16,ZP	11
11	30469	HYD,VALVE,BALL,8FP	1
12	31182	PIN,COTTER,1/4X2-1/2	2
13	30212	HYD,FIT,ELBOW,8MP-8MJ90	1

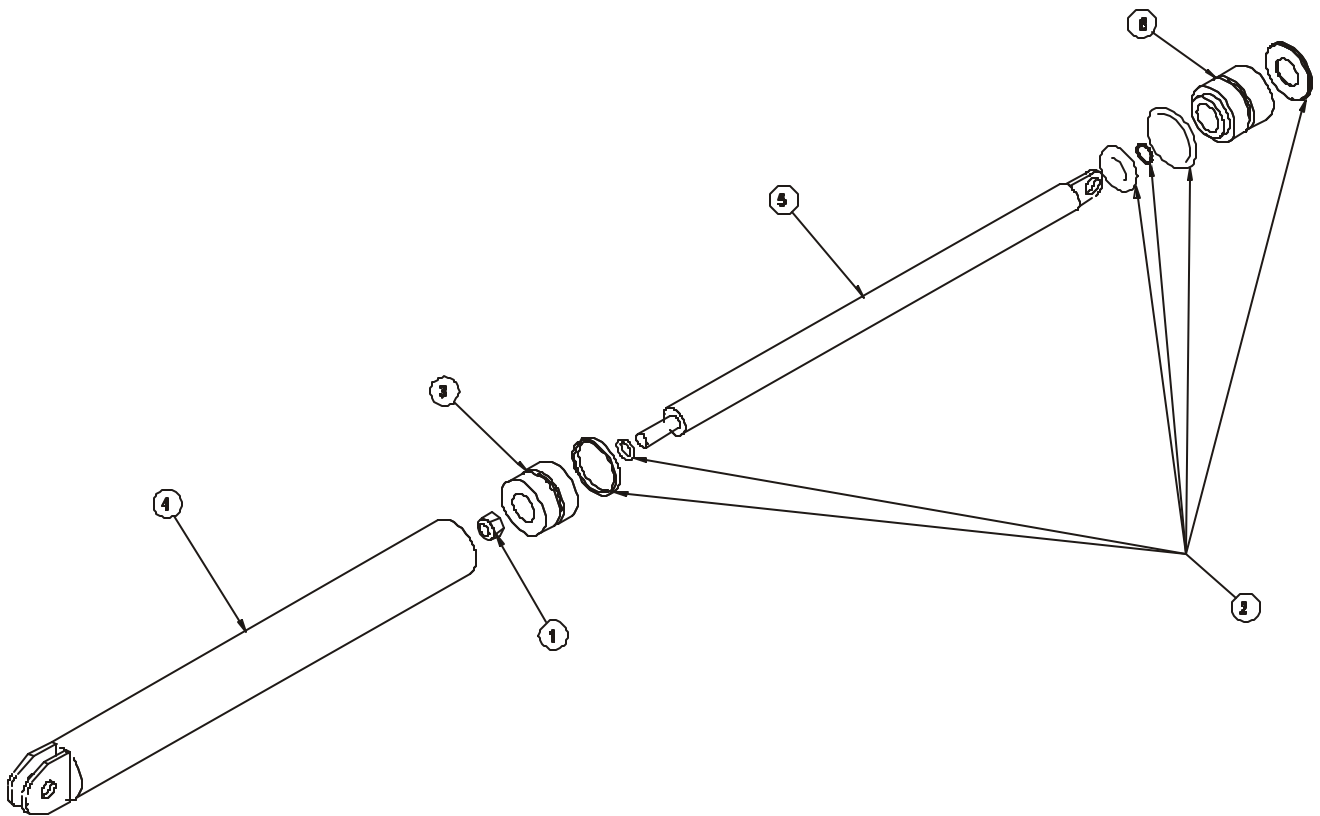
8510 (Part No. 50396)

ITEM NO.	PART NO.	DESCRIPTION	QTY.
1	31928	HYD,CYL,4.5X36,2.0,8FP	1
2	50278	PIN,CYL,LIFT, WLDT	2
3	32082	HYD,FIT,ADAPTOR,8MP-8MP	1
4	32107	HYD,FIT,THROTTLE,8MP-8FP	1
5	30605	HYD,HOSE,3/8X610,8MP-8FJX	1
6	30209	HYD,FIT,PIONEER,MALE,8FP	1
7	30210	HYD,CLAMP,HOSE,1/2	10
8	31177	NUT,NYLOCK,5/16,UNC,ZP	10
9	31453	BOLT,HEX,5/16X2,UNC,GR5,ZP	1
10	31239	WASHER,FLAT,5/16,ZP	11
11	30469	HYD,VALVE,BALL,8FP	1
12	31182	PIN,COTTER,1/4X2-1/2	2
13	30212	HYD,FIT,ELBOW,8MP-8MJ90	1



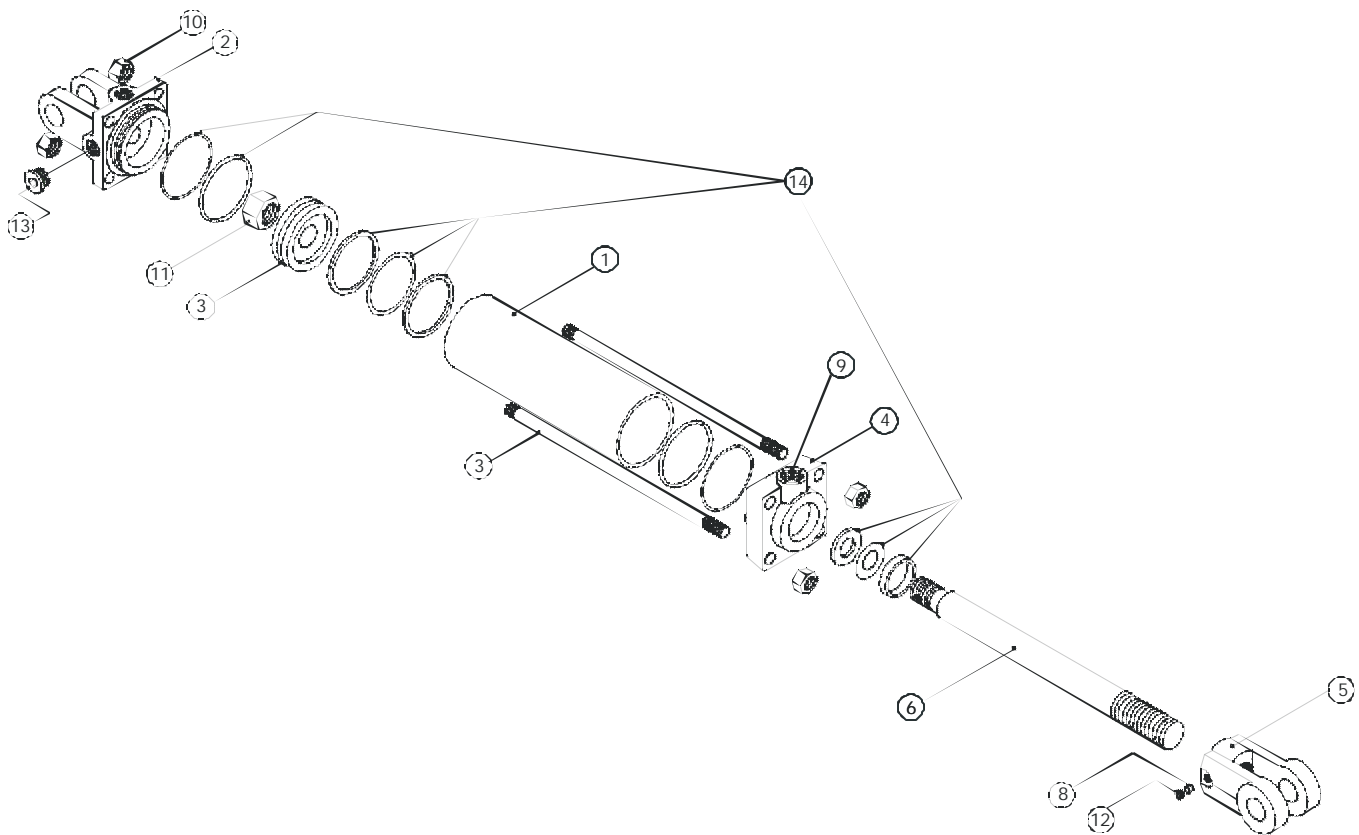
4.2.1 4x36 Cylinder (Part No. 30086)

ITEM	PART NO.	DESCRIPTION	QTY
1	30502	NUT, LOCK, 1.00 – 14, UNS	1
2	30503	SEAL KIT, 4 x 36, 2" ROD	1
3	30504	CYLINDER, PISTON, 4 x 1	1
4	30505	CYLINDER, TUBE, 4 x 36	1
5	30506	CYLINDER, SHAFT, 40/45/50-36	1
6	30507	CYLINDER, HEAD, 4 x 2	1



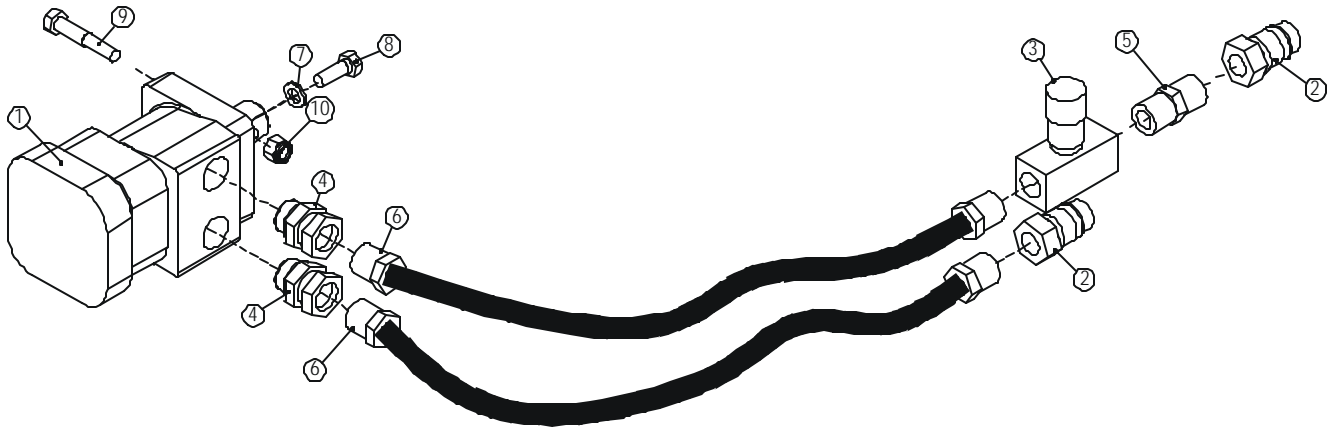
4.2.2 4.5x36 Cylinder (Part No. 31928)

ITEM NO.	PART NO.	DESCRIPTION	QTY
1	30654	TUBE,CYL,4.5-36	1
2	30655	CLEVIS,CAP,4.5-1/2 NPT-1/2-S	1
3	30656	TIE,ROD,5/8-36	4
4	30657	ROD,CAP,4.5-2-1/2 NPT	1
5	30658	ROD,CLEVIS,1.5-1.25-S,SHRT,NAR	1
6	30659	ROD,CYL,2-36-1.25-1.5-TL/TC	1
7	30660	PISTON,4.5-1.25-TC	1
8	30661	THRD,LOCK NYLOCK	1
9	30662	BREATHER,HYD,CYL,1/2NPT	1
10	30663	NUT,HEX,5/8 UNF,GR5	8
11	30664	NUT,HEX,1-1/4,12 UNF,LOCK,GRB	1
12	30665	SC,SCKT,SET,3/8 UNCX1/2 KNUR	1
13	30666	PLUG,1/2-14 NPTF,DRY,SEAL	1
14	30667	KIT,SEAL,CYL,4.5X36	1



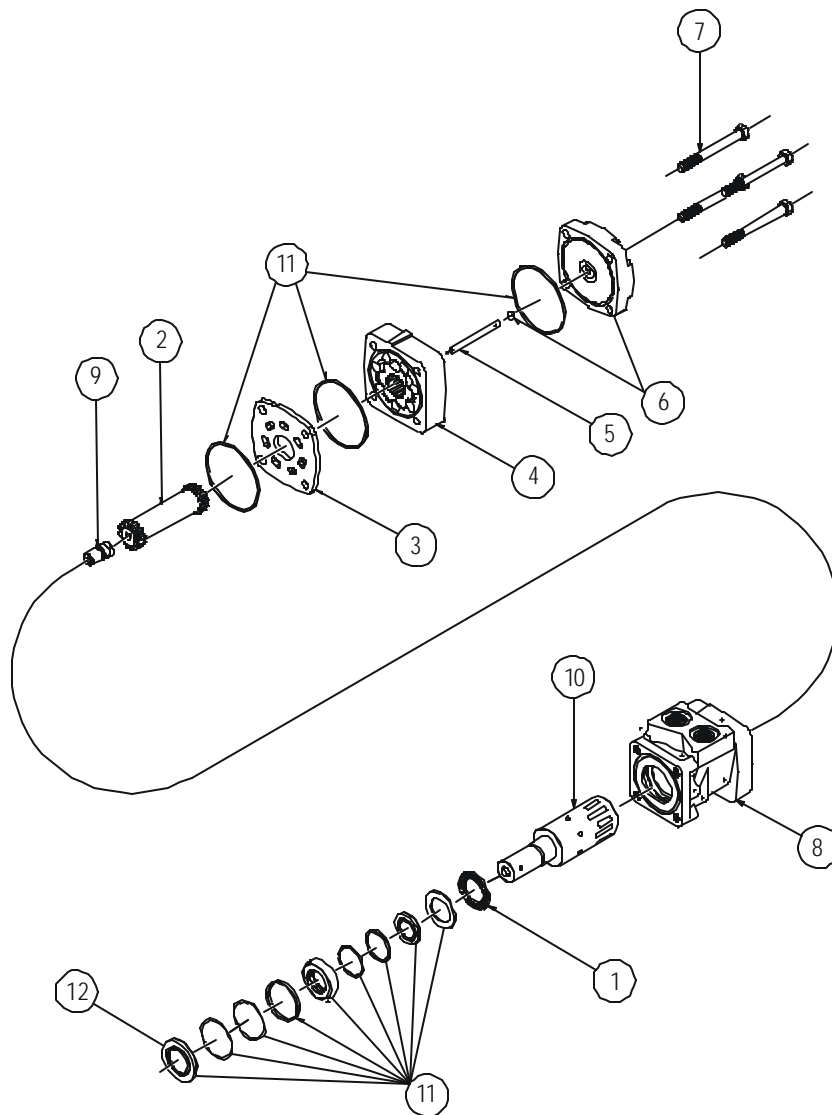
4.3 Conveyor Auger Hydraulic Kit (Part No. 50285)

ITEM NO.	PART NO.	DESCRIPTION	QTY.
1	30087	HYD,MOTOR,2.8,914RPM,1800PSI	1
2	30209	HYD,FIT,PIONEER,MALE,8FP	2
3	32975	HYD,VALVE,CONTROL,FLOW,8FP	1
4	32017	HYD,FIT,ADAPTOR,8FP-MB	2
5	32082	HYD,FIT,ADAPTOR,8MP-8MP	1
6	30036	HYD,HOSE,3/8X256,8MP-8MP,2W	2
7	31319	WASHER,LOCK,3/8,ZP	4
8	31043	BOLT,HEX,3/8X1,UNC,GR5,ZP	4
9	31067	BOLT,HEX,3/8X2,UNC,GR5,ZP	1
10	31176	NUT,NYLOCK,3/8,UNC,ZP	1



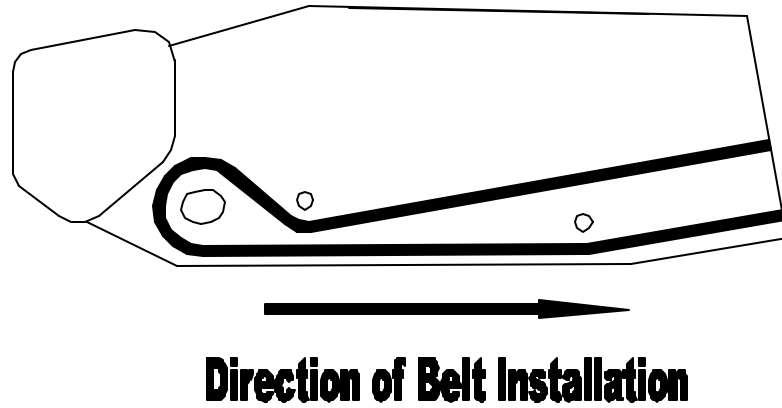
4.3.1 Hydraulic Motor Assembly(Part No. 30087)

ITEM NO.	PART NO.	DESCRIPTION	QTY.
1	31833	HYD,THRUST BEARING	1
2	31843	HYD,DRIVE LINK	1
3	31835	HYD,WEAR PLATE	1
4	31844	HYD,ROTOR ASSEMBLY	1
5	31845	HYD,DRIVE LINK PIN	1
6	31838	HYD,ENDCOVER KIT	1
7	31846	HYD,BOLT,ENDCOVER	4
8	31840	HYD,HOUSING	1
9	31841	HYD,COOLING PLUG	1
10	31842	HYD,SHAFT	1
11	32735	SEAL KIT	1
12	31986	HYD,MOTOR,SEAL,WHITE	

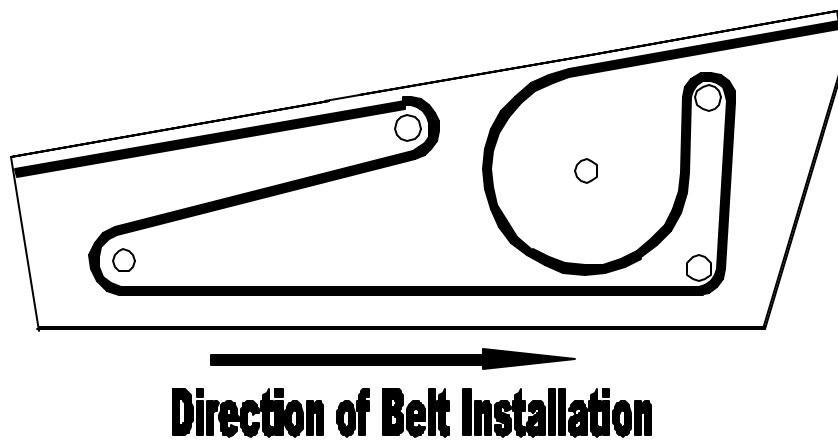


5.0 Belt Direction Diagrams

5.1 Intake Belt Set-up



5.2 Drive Belt Set-up



6.0 Part Number Index

PartNum	DESCRIPTION	PAGE	ITEM
30036	HYD,HOSE,3/8X256,8MP-8MP,2W	47	6
30037	SETSCREW,3/8UNCX3/8	22	30
30038	WASHER,FLAT,5/16X1-1/4OD	30	8
30040	RIVET,ST,3/16X.815,.625 HEAD	30	9
30086	HYD,CYL,4X36,CONVEYOR	44	1
30087	HYD,MOTOR,2.8,914RPM,1800PSI	47	1
30088	HYD,CYL,2X6,CONVEYOR	42	1
30091	DRV,ROLLER,1.9X17-3/4,7/16 HEX	27	3
30126	DRV,DL,UJ,35R,540	22	26
30207	ZERK,1/4-28,GF641,STRAIGHT	36	1
30209	HYD,FIT,PIONEER,MALE,8FP	42	4
30209	HYD,FIT,PIONEER,MALE,8FP	44	6
30209	HYD,FIT,PIONEER,MALE,8FP	47	2
30210	HYD,CLAMP,HOSE,1/2	44	7
30212	HYD,FIT,ELBOW,8MP-8MJ90	44	13
30223	WASHER,FLAT,1,SAE	36	2
30226	DRV,BRG,RACE,INNER,1.781	36	3
30271	DECAL,DANGER,ROTATING DRIVE	40	2
30294	SCREW,TEK,1/4X1	38	3
30446	CHAIN&PIN,JACK	38	2
30448	BEARING,FLANGE,1-1/2	22	12
30449	BEARING,FLANGE,1-1/4	16	11
30449	BEARING,FLANGE,1-1/4	22	10
30450	BEARING,HEX,1	16	29
30456	CLAMP,ROPE,WIRE,3/8	32	2
30456	CLAMP,ROPE,WIRE,3/8	33	2
30469	HYD,VALVE,BALL,8FP	44	11
30472	BEARING,HOUSING,HEX	16	28
30500	HYD,FIT,ELBOW,4MP-6FPX90	42	3
30502	NUT,LOCK,1-14UNS	45	1
30503	HYD,SEALKIT,4X36,2ROD	45	2
30504	HYD,CYL,PISTON,4X1	45	3
30505	HYD,CYL,TUBE,4X36	45	4
30506	HYD,CYL,SHAFT,40/45/50-36	45	5
30507	HYD,CYL,HEAD,4X2	45	6
30515	HYD,HOSE,3/8X96,6MP-8MP,1W	42	5
30526	ELEC,LIGHT,RED&AMBER,LEFT	39	4
30527	ELEC,LIGHT,RED&AMBER,RIGHT	39	5
30605	HYD,HOSE,3/8X550,8MP-8FPX	44	5
30611	NUT,NYLOCK,JAM,1/2,UNC,ZP	22	23
30640	KIT,LACE,SSRS125X15,PIN,WASHER	29	1
30641	LACE,SSRS125,15"	29	2
30642	LACE,PIN,NC-1,100'	29	3
30643	LACE,PIN,WASHER,50	29	4
30644	LACE,SPLICETOOL,RS125,4"	29	5
30645	HYD,CYL,BARREL	43	1
30646	HYD,CYL,ROD,NUT	43	2
30647	HYD,CYL,PISTON,2.00	43	3
30648	HYD,CYL,SHAFT,1.25	43	4
30649	HYD,CYL,GLAND	43	5

30650	HYD,CYL,SEALKIT,RAM,2.00X1.25	43	6
30654	TUBE,CY,4.5-36	46	1
30655	CLEVIS,CAP,4.5-1/2 NPT-1/2-S	46	2
30656	TIE,ROD,5/8-36	46	3
30657	ROD,CAP,4.5-2-1/2 NPT	46	4
30658	ROD,CLEVIS,1.5-1.25-S.SHRT,NAR	46	5
30659	ROD,CYL,2-36-1.25-1.5-TL/TC	46	6
30660	PISTON,4.5-1.25-TC	46	7
30661	THRDL,LOCK NYLOCK	46	8
30662	BREATHER,HYD,CYL,1/2 NPT	46	9
30663	NUT,HEX,5/8 UNF,GR5	46	10
30664	NUT,HEX,1-1/4,12 UNF,LOCK,GRB	46	11
30665	SC,SCKT,SET,3/8 UNC X 1/2 KNUR	46	12
30666	PLUG,1/2-14 NPTF,DRY,SEAL	46	13
30667	KIT,SEAL,CYL,4.5X36	46	14
31008	BOLT,CARR,1/2X1-1/2,UNC,GR5,ZP	22	14
31008	BOLT,CARR,1/2X1-1/2,UNC,GR5,ZP	30	10
31009	BOLT,CARR,1/2X2,UNC,GR5,ZP	16	16
31009	BOLT,CARR,1/2X2,UNC,GR5,ZP	22	17
31016	BOLT,HEX,1/2X1-1/2,UNC,GR5,ZP	16	23
31016	BOLT,HEX,1/2X1-1/2,UNC,GR5,ZP	34	18
31017	BOLT,HEX,1/2X1-3/4,UNC,GR5,ZP	22	21
31017	BOLT,HEX,1/2X1-3/4,UNC,GR5,ZP	27	8
31024	BOLT,HEX,1/2X3-1/2,UNC,GR8,ZP	34	13
31025	BOLT,HEX,1/2X3-3/4,UNC,GR5,ZP	27	6
31029	BOLT,HEX,1/4X1,UNC,GR5,ZP	16	39
31029	BOLT,HEX,1/4X1,UNC,GR5,ZP	28	5
31030	BOLT,HEX,1/4X2,UNC,GR5,ZP	28	8
31033	BOLT,HEX,1/4X3/4,UNC,GR5,ZP	16	45
31043	BOLT,HEX,3/8X1,UNC,GR5,ZP	16	20
31043	BOLT,HEX,3/8X1,UNC,GR5,ZP	30	11
31043	BOLT,HEX,3/8X1,UNC,GR5,ZP	34	16
31043	BOLT,HEX,3/8X1,UNC,GR5,ZP	47	8
31044	BOLT,HEX,3/8X1-1/2,UNC,GR5,ZP	16	31
31067	BOLT,HEX,3/8X2,UNC,GR5,ZP	47	9
31070	BOLT,HEX,1/2X2,UNC,GR5,ZP	22	36
31154	BOLT,CARR,1/2X1-1/4,UNC,GR5,ZP	22	18
31156	BOLT,HEX,1X6-1/2,UNC,GR5,ZP	37	8
31162	NUT,HEX,1,UNC,GR5,ZP	37	11
31163	NUT,HEX,1/2,UNC,GR5,ZP	22	39
31164	NUT,HEX,1/4,UNC,GR5,ZP	16	13
31167	NUT,HEX,3/4,UNC,GR5,ZP	32	5
31167	NUT,HEX,3/4,UNC,GR5,ZP	33	5
31172	NUT,NYLOCK,1,UNC,ZP	34	12
31172	NUT,NYLOCK,1,UNC,ZP	37	5
31173	NUT,NYLOCK,1/2,UNC,ZP	16	17
31173	NUT,NYLOCK,1/2,UNC,ZP	22	15
31173	NUT,NYLOCK,1/2,UNC,ZP	27	7
31173	NUT,NYLOCK,1/2,UNC,ZP	30	12
31173	NUT,NYLOCK,1/2,UNC,ZP	34	14
31174	NUT,NYLOCK,1/4,UNC,ZP	16	42
31174	NUT,NYLOCK,1/2,UNC,ZP	28	6
31174	NUT,NYLOCK,1/4,UNC,ZP	39	3

31176	NUT,NYLOCK,3/8,UNC,ZP	16	25
31176	NUT,NYLOCK,3/8,UNC,ZP	30	13
31176	NUT,NYLOCK,3/8,UNC,ZP	32	6
31176	NUT,NYLOCK,3/8,UNC,ZP	33	6
31176	NUT,NYLOCK,3/8,UNC,ZP	34	17
31176	NUT,NYLOCK,3/8,UNC,ZP	47	10
31177	NUT,NYLOCK,5/16,UNC,ZP	22	41
31177	NUT,NYLOCK,5/16,UNC,ZP	30	14
31177	NUT,NYLOCK,5/16,UNC,ZP	44	8
31179	NUT,NYLOCK,9/16,UNC,ZP	16	24
31179	NUT,NYLOCK,9/16,UNC,ZP	18	7
31179	NUT,NYLOCK,9/16,UNC,ZP	20	7
31179	NUT,NYLOCK,9/16,UNC,ZP	24	3
31179	NUT,NYLOCK,9/16,UNC,ZP	25	3
31179	NUT,NYLOCK,9/16,UNC,ZP	26	3
31182	PIN,COTTER,1/4X2-1/2	44	12
31183	PIN,COTTER,3/16X2	34	6
31183	PIN,COTTER,3/16X2	36	4
31218	WASHER,LOCK,5/8,ZP	16	18
31235	1" FLAT WASHER	37	13
31236	WASHER,FLAT,1/2,ZP	16	43
31236	WASHER,FLAT,1/2,ZP	22	31
31237	WASHER,FLAT,1/4,ZP	16	41
31237	WASHER,FLAT,1/4,ZP	28	4
31238	WASHER,FLAT,3/4,ZP	32	3
31238	WASHER,FLAT,3/4,ZP	33	3
31239	WASHER,FLAT,5/16,ZP	44	10
31242	WASHER,FLAT,9/16,ZP	30	15
31243	WASHER,LOCK,1,ZP	37	10
31244	WASHER,LOCK,1/2,ZP	16	22
31246	WASHER,LOCK,3/4,ZP	32	4
31246	WASHER,LOCK,3/4,ZP	33	4
31319	WASHER,LOCK,3/8,ZP	16	21
31319	WASHER,LOCK,3/8,ZP	47	7
31332	BOLT,HEX,1/2X1-1/4,UNC,GR5,ZP	34	15
31345	BOLT,HEX,3/8X3/4,UNC,GR5,ZP	16	34
31351	WASHER,FLAT,3/8,ZP	16	26
31416	BOLT,WHIZ-LOK,1/2X1-1/2	41	2
31417	NUT,WHIZ-LOK,1/2	41	3
31431	BOLT,CARR,1/2X2-1/4,UNC,GR5,ZP	22	16
31434	BOLT,CARR,1/2X1,UNC,GR5,ZP	22	19
31449	BOLT,HEX,1X3-1/2,UNC,GR8,ZP	34	11
31453	BOLT,HEX,5/16X2,UNC,GR5,ZP	44	9
31470	BOLT,HEX,1X2-1/2,UNC,GR5,ZP	34	19
31471	1X3 HEX BOLT,UNC,GR5	37	12
31473	BOLT,HEX,1X5-1/2,UNC,GR5,ZP	37	4
31536	WASHER,FLAT,3/16,ZP	30	16
31566	BOLT,SQRHEAD,7/16UNCX2,GR5,ZP	16	27
31566	BOLT,SQRHEAD,7/16X2,UNC,GR5,ZP	22	44
31566	BOLT,SQRHEAD,7/16X2,UNC,GR5,ZP	30	17
31581	BOLT,HEX,1/4X1-1/4,UNC,GR5,ZP	16	40
31581	BOLT,HEX,1/4X1-1/4,UNC,GR5,ZP	39	6

31585	BOLT,CARR,3/8X1-1/2,UNC,GR5,ZP	16	46
31587	BOLT,HEX,1/4X4,UNC,GR5,ZP	39	7
31590	CHAIN,SAFETY,ASAE,10100 LB,5'4"	37	14
31701	BOLT,HEX,M14X25,GR8.8,ZP	16	19
31704	BOLT,HEX,9/16X1-3/4,UNC,GR5,ZP	18	8
31704	BOLT,HEX,9/16X1-3/4,UNC,GR5,ZP	20	8
31704	BOLT,HEX,9/16X1-3/4,UNC,GR5,ZP	24	2
31704	BOLT,HEX,9/16X1-3/4,UNC,GR5,ZP	25	2
31704	BOLT,HEX,9/16X1-3/4,UNC,GR5,ZP	26	2
31704	BOLT,HEX,9/16X1-3/4,UNC,GR5,ZP	30	18
31833	HYD,THRUST BEARING	48	1
31835	HYD,WEAR PLATE	48	3
31838	HYD, ENDCOVER KIT	48	6
31840	HYD,HOUSING	48	8
31841	HYD,COOLING PLUG	48	9
31842	HYD,SHAFT	48	10
31843	HYD,DRIVE LINK	48	2
31844	HYD,ROTOR ASSEMBLY	48	4
31845	HYD,DRIVE LINK PIN	48	5
31846	HYD,BOLT,ENDCOVER	48	7
31905	HYD,FIT,ORIFIC,.051,4MP-6FPX90	42	2
31909	NUT,UNITORQ,.875-14 UNF	43	1
31910	HYD,CYL,PISTON,2.00X.875	43	2
31911	HYD,CYL,TUBE,2006,HIGHLINE	43	3
31912	HYD,CYL,SHAFT,2006,HIGHLINE	43	4
31913	HYD,CYL,HEAD,2.00X1.25	43	5
31914	HYD,CYL,SEAL KIT,PAL,2.00X1.25X.875	43	6
31928	HYD,CYL,4.5X36,2.0,8FP	44	1
31930	BEARING,ROUNT,1-1/4",EL	30	19
31986	HYD,MOTOR,SEAL,WHITE	48	12
32017	HYD,FIT,ADAPTER,8FP-10MB	47	4
32082	HYD,FIT,ADAPTER,8MP-8MP	44	3
32082	HYD,FIT,ADAPTER,8MP-8MP	47	5
32107	HYD,FIT,THROTTLE,8MP-8FP	44	4
32296	SUSP,CAP,DUST,DC15	36	5
32297	NUT,SLOTTED,1-14 UNF	36	6
32299	BRG,RACE,OUTER	36	7
32300	BRG,OUTER	36	8
32301	SUSP,BOLT,WHEEL,9/16X1-1/4	36	9
32305	BEARING,INNER	36	10
32306	SEAL,GREASE	36	11
32312	SUSP,HUB,H614-1	36	12
32735	SEAL KIT	48	11
32975	HYD,VALVE,CONTROL,FLOW,08FP	47	3
33020	BELT,15",REPLACEMENT,1'	29	6
45222	SUSP,TIRE,11LX15FI	36	3
45223	SUSP,WHEEL,15X8LB,1.12OFF,6 BOLT	36	1
45228	SUSP,HUB,H614,5000LBS	34	4
49089	WHEEL,COMPLETE,BP,OFF-WHITE	34	5
50106	ROLLER,3-1/2	16	4
50106	ROLLER,3-1/2	22	2
50122	TONGUE,HITCH	37	2
50139	AUGER,WELDMENT	16	5
50144	ROLLER,DRIVE,VULCANIZED	22	3

50176	PIN,1X5-15/16	37	6
50176	PIN,1X5-15/16	42	6
50197	GUARD,PTO,ASSY	22	22
50253	IDLER,RETURN,ASSY	18	6
50253	IDLER,RETURN,ASSY	20	6
50253	IDLER,RETURN,ASSY	24	7
50253	IDLER,RETURN,ASSY	25	7
50253	IDLER,RETURN,ASSY	26	7
50254	TRUSS&ANCHOR,SMALL,ASSY	24	5
50254	TRUSS&ANCHOR,SMALL,ASSY	25	5
50254	TRUSS&ANCHOR,SMALL,ASSY	26	5
50255	ANCHOR,CABLE,ASSY	24	6
50255	ANCHOR,CABLE,ASSY	25	6
50255	ANCHOR,CABLE,ASSY	26	6
50258	PIVOT,MAIN,ASSY	18	3
50258	PIVOT,MAIN,ASSY	20	3
50259	DISCHARGE,WLDT	30	1
50261	INTAKE,WLDT	16	1
50264	CLAMP,CABLE,EYEBOLT,ASSY	18	2
50264	CLAMP,CABLE,EYEBOLT,ASSY	20	2
50265	STAGE1,WLDT	18	1
50265	STAGE1,WLDT	20	1
50265	STAGE1,WLDT	26	1
50270	AXLE,WLDT,RIGHT	34	1
50271	AXLE,WLDT,LEFT	34	2
50273	SUPPORT,FRAME,UPPER,WLDT	34	7
50274	SUPPORT,FRAME,LOWER,WLDT,R	34	22
50275	SUPPORT,FRAME,MIDDLE,WLDT	34	9
50276	FRAME,REST,WLDT	34	10
50278	PIN,CYL,LIFT,WLDT	44	2
50280	TRUSS,SMALL,ANCHOR,ASSY	18	4
50280	TRUSS,SMALL,ANCHOR,ASSY	20	4
50281	PIVOT,MINOR,ASSY	18	5
50281	PIVOT,MINOR,ASSY	20	5
50283	REST,SCISSOR,ASSY	18	9
50283	REST,SCISSOR,ASSY	20	9
50284	KIT,SERIAL NUMBER	34	21
50286	SUPPORT,FRAME,LOWER,WLDT,L	34	8
50287	COVER,REAR,WLDT	22	8
50288	COVER,FRONT,WLDT	22	7
50289	FLANGE,INTAKE,WLDT	16	35
50299	LEG WLDT,R,LIGHT	39	2
50300	LEG WLDT,L,LIGHT	39	1
50304	ELEC_HARNESS,LIGHT,ACC	39	9
50309	BRKT,PTO,WLDT	22	24
50310	SIGN,SMV,COMPLETE	34	20
50315	STAGE2,WLDT,75'	25	1
50316	STAGE2,WLDT,65'	24	1
50318	ROLLER,3-1/2",CROWNED	16	32
50341	IDLER,RETURN,ASSY,DBL	18	10
50341	IDLER,RETURN,ASSY,DBL	20	10
50341	IDLER,RETURN,ASSY,DBL	24	4

50341	IDLER,RETURN,ASSY,DBL	25	4
50341	IDLER,RETURN,ASSY,DBL	26	4
50342	SKIRT,ASSY,SHORT	18	12
50342	SKIRT,ASSY,SHORT	20	12
50344	BRKT,TENSIONER,SIDE,ASSY	22	34
50346	BRKT,TENSIONER,BOTTOM,ASSY	22	33
50347	HITCH,WLDT	37	1
50348	HITCH, ASSY	16	30
50349	TAKE-UP,WLDT,SHORT	22	6
50350	ROD,TENSIONER,WLDT	22	37
50355	EXTENSION,HITCH,WLDT,DUAL	37	9
50356	JACK,DUAL,WLDT	38	1
50357	PAN,DRIVE,WLDT	22	1
50369	IDLER,RETURN,ASSY,TRAINING	18	11
50369	IDLER,RETURN,ASSY,TRAINING	20	11
50371	IDLER,RETURN,WLDT,TRAINING	27	1
50507	WLDT,HANGER,BEARING	16	6
50509	WLDT,INTAKE GUARD	16	7
50515	ASSY,ROLLER,ACCEL,CROWN	30	2
91048	SUSP,STEM,VALVE,TR415	36	2
91608	PIN,HAIR,1/8X2-9/16	22	28
91608	PIN,HAIR,1/8X2-9/16	37	7
91608	PIN,HAIR,1/8X2-9/16	42	7
92014	CLAMP,CABLE,1/4	22	40
92209	PIN,HITCH,1/2X5	22	27
92562	DECAL,WARNING,HITCH,JACK	40	1
92579	DECAL,HIGHLINE,4X30	40	5
E3278	DECAL,CAUTION,CABLE,SIDE	40	16
E3279	DECAL,CAUTION,CABLE,FRONT	40	17
E4104	PLATE,RETAINING,BEARING	16	10
E4104	PLATE,RETAINING,BEARING	22	11
E4104	PLATE,RETAINING,BEARING	30	3
E4170	DECAL,DANGER,ELECTROCUTION	40	10
E4171	DECAL,CAUTION,READ	40	9
E4173	DRV,DL,GUARD,PTO	22	29
E4182	KEY,3/8X2	22	25
E4187	SUSP,SPINDLE,S614	34	3
E4209	DECAL,8510	40	3
E4227	PLATE,SPACER,ROLLER,DRIVE	22	13
E5075	ROLLER,IDLER,TRAINING	27	2
E5102	DECAL,RED/WH,REFL,2X72	40	7
E5113	PLATE,TAKE-UP,OUTSIDE	22	5
E5114	COVER,DRIVE	22	9
E5127	SPACER,HITCH	37	3
E5133	ROPE,WIRE,SHORT,85'	32	1
E5134	ROPE,WIRE,LONG,85'	33	1
E5135	PLATE,LIGHT-KIT,BASE	39	8
E5138	ROPE,WIRE,SHORT,75'	32	1
E5139	ROPE,WIRE,LONG,75'	33	1
E5140	ROPE,WIRE,SHORT,65'	32	1
E5141	ROPE,WIRE,LONG,65'	33	1
E5144	DECAL,7510	40	3

E5145	DECAL,6510	40	3
E5159	SKIRT,STEEL,LEFT	28	2
E5160	CLAMP,PIPE,10"X2"	27	5
E5163	CLAMP,PIPE,10X4	22	20
E5172	WASHER,IDLER,RETURN	27	4
E5174	SKIRT,STEEL,RIGHT	28	3
E5179	HOOD,DISCHARGE	30	4
E5190	DECAL,LICENCED BY DARMANI	40	8
E5198	DECAL,PINSTRIPE,CONV,17'	40	6
E5303	DEFLECTOR,HOPPER	16	15
E5309	DECAL,JACK,TRANSPORT	40	11
E5310	DECAL,JACK,ELEVATED	40	12
E5311	DECAL,HITCH,POSITION	40	13
E5325	DECAL,AUGER,ACC	40	14
E5338	STRAP,ACC	41	1
E5339	DECAL,DAMAGE,STRUCTURAL	40	15
E5347	SPACER,DRIVE,TENSIONER	22	4
E5410	SCRAPER,DISCHARGE	30	5
E5416	SPACER,FRAME,SUPPORT,UPPER	34	23
E5426	BRACKET,INTAKE,AUGER,SUPPORT	16	2
E5429	HOPPER,INTAKE,PLASTIC	16	3
E5430	TRAY,INTAKE,CLEAN-OUT	16	12
E5431	ADJUSTER,INTAKE,BEARING	16	14
E5437	INSERT,DICHARGE,OUTER	30	6
E5438	INSERT,DISCHARGE,HOOD	30	7
E5452	SKIRT,STEEL,LONG	28	1
E5455	PLATE,INTAKE,FRONT	16	33
E5456	RETAINER,INTAKE,SKIRTING,REAR	16	37
E5462	RETAINER,INTAKE,SKIRTING	16	36
E5464	DECAL,ACC,XTRA	40	4
E5465	SKIRT,INTAKE,LONG	16	38
E5477	SPRING,EXT,3-3/4 X 16.249	22	38
E5478	SKIRT,STEEL,STAGE 1	28	7
E5483	PAN,DRIVE,TENSIONER	22	32
E5494	CABLE,TENSIONER	22	35
E5819	BUSHING,BEARING,ACC	16	44
E5819	BUSHING,BEARING,ACC	22	42
E5821	BRACKET,HOSEHOLDER	22	43
E6051	DECAL,T_TRANSPORT, DO NOT LIFT	40	18
E6322	INT,GUARD	16	8
E6343	CHANNEL,GUARD,LOCK	16	9

7.0 Specifications

Accelerator 6510

Weight Approximately 3211 lbs (1457 kg)
Travel Length 72' 3" (22.02 m)
Total Width 11'8" (3.56 m)
Max. Working Height @ 30° = 30' (9.14m)
Transport Height @ 20" hitch height = 10'1" (3.07 m)

Horsepower Required 80 + hp
Hydraulic Outlets Req'd Three
Hydraulic Pressure 2,000 psi. (13,790 KPa)

Accelerator 7510

Weight Approximately 3933 lbs (1784 kg)
Total Length 81'3" (24.77 m)
Total Width 11'8" (3.56 m)
Maximum Height @ 30° = 35' (10.67 m)
Transport Height @ 20" hitch height = 10'3" (3.12 m)

Horsepower Required 80 + hp
Hydraulic Outlets Req'd Three
Hydraulic Pressure 2,000 psi. (13,790 KPa)

Accelerator 8510

Weight Approximately 4750 lbs (2155 kg)
Travel Length 91' 3" (27.81 m)
Total Width 11'8" (3.56 m)
Maximum Height @ 30° = 41' (12.50 m)
Transport Height @ 20" hitch height = 10'8" (3.25 m)

Horsepower Required 80 + hp
Hydraulic Outlets Req'd Three
Hydraulic Pressure 2,200 psi. (15,170 KPa)

Dealer Information

Dealer: _____

Address: _____

City: _____

Province / State: _____

Postal Code / Zip Code: _____

Phone: _____



Identification Numbers

Model Number: _____

Serial Number: _____

Dealer Checklist

Accelerator Dealer Checklist

Checked	Check List Item
	Verify all bolts tight and no loose bolts or other debris sitting on belt.
	Verify serial number plate attached.
	Hydraulic lift, up/down. Cycle through lift a minimum of 3 times.
	Ensure there is enough Hydraulic Hose at full extension - leave 7 feet coiled.
	Check hyd. motor driving the auger for proper rotation, leaks and possible interference with belt.
	Cycle hitch cylinder 3-4 times and check for leaks and clearance problems.
	Inspect conveyor belt splice for condition and correct installation.
	Check alignment of tube and adjust with cables. Check cable tension - accelerator not sagging and straight.
	PTO installed correctly with proper warning decals, both allen head bolts installed on shaft.
	Belt alignment to be adjusted at Head Roller, Tail Roller, and Drive Roller.
	Belt idlers inspected for proper installation and operation.
	Conveyor must be run through complete operating range, from 320rpm to 520rpm.
	Check for excessive belt wear on both sides of belt. Grooving in belt after run-in is a failure.
	Check tire pressure and adjust as required. (as specified on tire)