

EZ FEED-3

2003 Owner's Manual

This page left intentionally blank.

Table of Contents

Warranty 5
President’s Message 7
Safety Precautions 8

1.0 Assembly and Installation Instructions 10

2.0 Operating Instructions 19

3.0 Maintenance Instructions 21

4.0 Parts Information 23

 4.1 Main Assembly (Part No. EZFEED-3 (89037)) 23

 4.2 EZ Feed Assembly (Part No. 49509) 24

 4.3 Slow Moving Vehicle Assembly (Part No. 49510) 28

 4.4 Break-Away Discharge Auger Assembly (Part No. 49138) 30

 4.4.1 Hydraulic Motor Assembly (Part No. 30087) 32

 4.5 Grain Tank Assembly (Part No. 49147) 34

 4.5.1 10 cu. in. Hydraulic Motor Assembly (Part No. 37989) 37

 4.6 EZ Feed Hydraulics (Part No. 49148) 38

 4.7 Auger Lift Linkage Assembly (Part No. 49149) 40

 4.8 Decal Location 41

5.0 Options 44

 5.1 Electric/Hydraulic EZFeed Option (Part No. EZOEH-3 (89012)) 44

 5.1.1 Selector Valve Harness (Part No. 49421) 46

 5.1.2 Double Selector Hydraulic Valve (Part No. 33201) 48

6.0 Part Index 49

7.0 Specifications 53

Dealer Information 54

Identification Numbers 54

Dealer Checklist 55

This page left intentionally blank.

Warranty

Highline New Agricultural Equipment Limited Warranty

Effective July 1, 2000 Two (2) Year / 24 Months

1st Year Parts and Labour –2nd Year Parts Only

Highline Mfg. Inc (hereinafter "Highline") warrants each new Agricultural product of Highline's manufacturer to be free from defects in material and workmanship, under normal use and service for two (2) full years after initial purchase/retail sale. Highline will warrant its product for one (1) year parts and labour, if performed by a qualified Dealer and on the second year parts only. This Limited Warranty shall apply only to complete machines of Highline's manufacture, parts are covered by a separate Limited Warranty.

EQUIPMENT AND ACCESSORIES NOT OF HIGHLINE'S MANUFACTURE ARE WARRANTED ONLY TO THE EXTENT OF THE ORIGINAL MANUFACTURER'S WARRANTY AND SUBJECT TO THEIR ALLOWANCE TO HIGHLINE ONLY IF FOUND DEFECTIVE BY SUCH MANUFACTURER.

During the Limited Warranty period specified above, any defect in material or workmanship in any warranted item of Highline Agricultural Equipment not excluded below shall be repaired or replaced at Highline's option without charge by any authorized independent Highline Dealer. An authorized Dealer must make the warranty repair or replacement. Labour in accordance with Highline's labour reimbursement policy. Highline reserves the right to supply remanufactured replacement parts as it deems appropriate.

RETAIL PURCHASER RESPONSIBILITY: This Limited Warranty requires proper maintenance and periodic inspections of the Agricultural Equipment as indicated in the Operator's Manual furnished with each new Agricultural Equipment. The cost of routine or required maintenance and services is the responsibility of the retail purchaser. The retail purchaser is required to keep documented evidence that these services were performed. This Highline New Agricultural Equipment Limited Warranty may be subject to cancellation if the above requirements are not performed

EXCLUSIONS AND LIMITATIONS

The warranties contained herein shall **NOT APPLY TO:**

- (1) Any defect which was caused (in Highline's sole judgement) by other than normal use and service of the Agricultural Equipment, or by any of the following: (i) accident (ii) misuse or negligence (iii) overloading (iv) lack of reasonable and proper maintenance (v) improper repair or installation (vi) unsuitable storage (vii) non-Highline approved alteration or modification (viii) natural calamities (ix) vandalism (x) parts or accessories installed on Agricultural Equipment which were not manufactured or installed by Highline authorized Dealers (xi) the elements (xii) collision or other accident.
- (2) Any Agricultural Equipment whose identification numbers or marks have been altered or removed.
- (3) Any Agricultural Equipment which any of the required or recommended periodic inspection or services have been performed using parts not manufactured or supplied by Highline or meeting Highline Specifications including, but without limitation, lubricants (oil, grease), belt lacings, and hydraulic fluids.
- (4) Equipment used for rental, custom work, industrial and construction or if equipment is used for any other purpose than the intended agricultural application.
- (5) Any Agricultural Equipment used in demonstrations not performed by a Highline Dealer. Warranty will be at the discretion of Highline for all other demonstration warranty.
- (6) **New Agricultural Equipment delivered to the retail purchaser in which the warranty registration has not been completed and returned to Highline within ten (10) days from the date of purchase.**
- (7) Any defect that was caused (in Highline's sole judgement) by operation of the Agricultural Equipment not abiding by standard operating procedures outlined in the Operator's Manual.
- (8) Tire Limited Warranties and support are the responsibility of the respective product's manufacturer.
- (9) Transportation costs, if any, of transporting to the Highline Dealer.
- (10) In no event shall Highline's liability exceed the purchase price of the product.
- (11) Highline shall not be liable to any person under any circumstances for any incidental or consequential damages (including but not limited to, loss of profits, out of service time and damage to equipment which this equipment may be attached) occurring for any reason at any time.
- (12) Diagnostic and overtime labour premiums are not covered under this Limited Warranty Policy.
- (13) Depreciation damage caused by normal wear, lack of reasonable and proper maintenance, failure to follow operating instructions, misuse, and/or lack of proper protection during storage.
- (14) Accessory systems and electronics not of Highline's manufacture are warranted only to the extent of such manufacturer's respective Limited Warranty if any.
- (15) Wear items which are listed by product group below:

COMMON WEAR ITEMS: roller chain, sprockets, clutches, shear bolts, clutch components, chains, gearbox housings bolts/torqued parts, flails, feed roller belting, coupler chain, DRV couplers, bogie wheels, apron tines and hoses.

PARTS WARRANTY

Parts replaced in the warranty period will receive the balance of the two year New Agricultural Equipment Limited Warranty.

Replacement parts after the original machine warranty are warranted to be free from defects of material for ninety (90) days or the part will be repaired or replaced, without labour coverage for removal and reinstallation.

EXCLUSION OF WARRANTIES, UNLESS OTHERWISE REQUIRED BY LAW, AND EXCEPT FOR THE WARRANTIES EXPRESSLY AND SPECIFICALLY MADE HEREIN, HIGHLINE MAKES NO OTHER WARRANTIES, AND ANY POSSIBLE LIABILITY OF HIGHLINE HEREIN UNDER IS IN LIEU OF ALL OTHER WARRANTIES, EXPRESS, IMPLIED, OR STATUTORY, INCLUDING, BUT NOT LIMITED TO, ANY WARRANTIES OF MERCHANT ABILITY OR FITNESS FOR A PARTICULAR PURPOSE. HIGHLINE RESERVES THE RIGHT TO MODIFY, ALTER AND IMPROVE ANY PRODUCT WITHOUT INCURRING ANY OBLIGATION TO REPLACE ANY PRODUCT PREVIOUSLY SOLD WITH SUCH MODIFICATION. NO PERSON IS AUTHORIZED TO GIVE ANY OTHER WARRANTY, OR TO ASSUME ANY ADDITIONAL OBLIGATION ON HIGHLINE'S BEHALF.

This page left intentionally blank.

President's Message

Congratulations on your purchase of the EZ Feed HD-3 grain tank manufactured by Highline Mfg. Inc. We are a company that has a team with over 25 years experience in the farm implement manufacturing industry.

This operator's manual has been prepared to provide information necessary for safe and efficient operation of your *EZ Feed HD-3*. In the manual you will find safety procedures, installation instructions, maintenance routines and detailed parts diagrams.

In order to maintain our high standards, improvements are made from time to time. Highline Mfg. Inc. reserves the right to make those changes and improvements when practical to do so without incurring any obligation to make such changes and improvements on machines previously sold.

Should the need arise, this manual will assist you in acquiring replacement parts. If your dealer does not have the parts you require in stock, the dealer will be happy to order them for you. Also, if you find that you require information not covered in this manual, please feel free to consult your local dealer or Highline Mfg. Inc.

Highline Mfg. Inc. thanks and congratulates you for selecting an *EZ Feed HD-3* as your machine of choice.

Sincerely,

Chuck LePage, President
Highline Mfg. Inc.

PO Box 307, Vonda, Saskatchewan, S0K 4N0

Phone 1-800-665-2010 Fax (306) 258-2010

Internet Address: <http://www.highlinemfg.com>

Safety Precautions

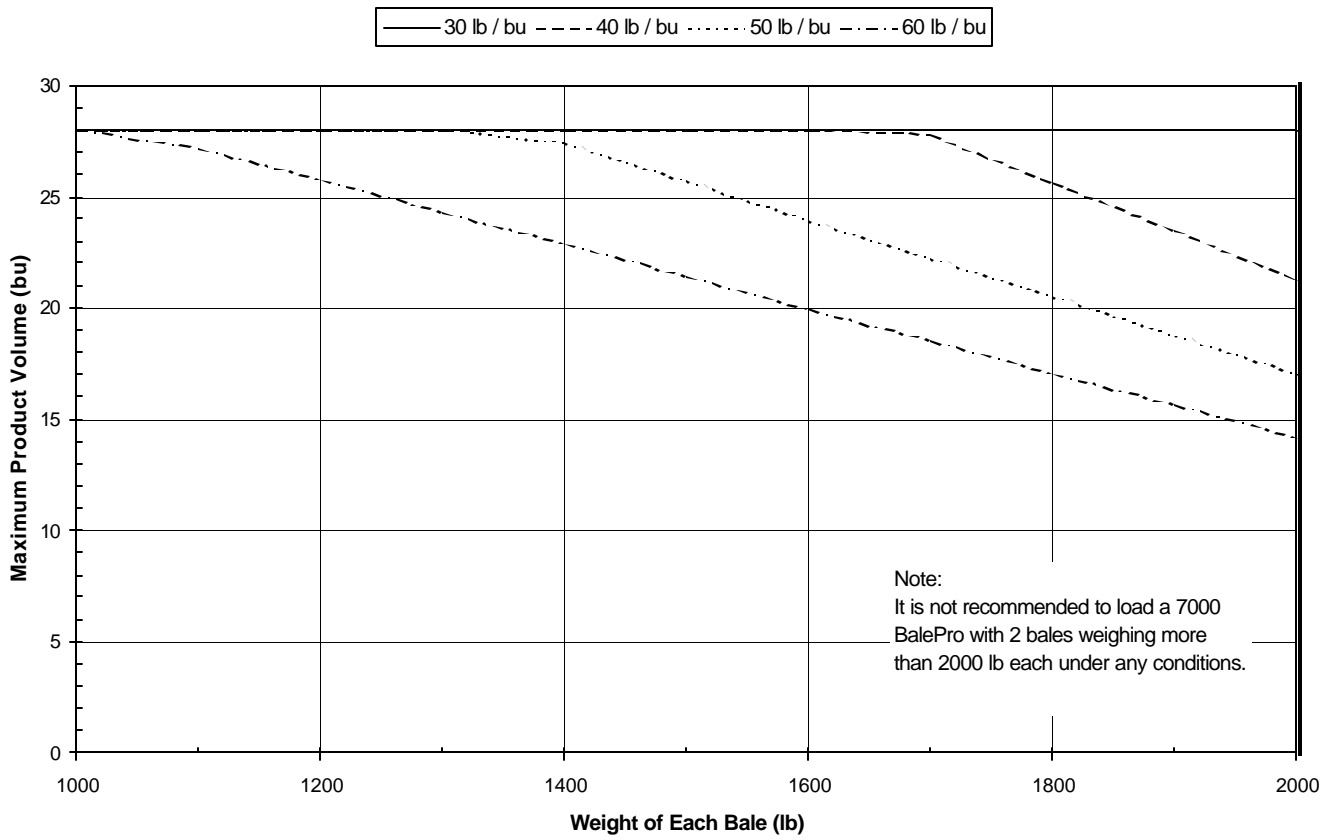
WORK SAFELY – FOLLOW THESE INSTRUCTIONS

CAREFUL OPERATION IS THE BEST INSURANCE AGAINST AN ACCIDENT!

- ◆ Keep children and adults away from discharge area while processing.
- ◆ Know the controls and what they do.
- ◆ Check machine to ensure nothing restricts moving or rotating parts.
- ◆ Ensure PTO is disengaged before starting tractor.
- ◆ Never leave tractor while PTO is engaged.
- ◆ Lower forks to ground after operation.
- ◆ Never attempt to manually remove debris while the PTO is activated.
- ◆ Do not transport Bale Pro on highway with CV extension shaft on machine or with bales in tub or on the forks.
- ◆ Disconnect CV before unplugging or adjusting the processor.
- ◆ Always keep safety shields in place.
- ◆ Relieve pressure in hydraulic lines before disconnecting lines or performing other work on the hydraulic system.
- ◆ Never allow anyone to stand behind the processor while loading a bale.
- ◆ Never attempt to clean tank or discharge auger while machine is running.
- ◆ Never transport unit on highway with product in tank.
- ◆ When operating unit with two bales, see Chart 1 on Page 9 for maximum recommended volume of product in grain tank.

Chart 1: Maximum Recommended Product Volume

**7000 BALE PRO with EZ Feed - Product Volume vs Bale Weight
2 Bales at Speeds < 25 mph**

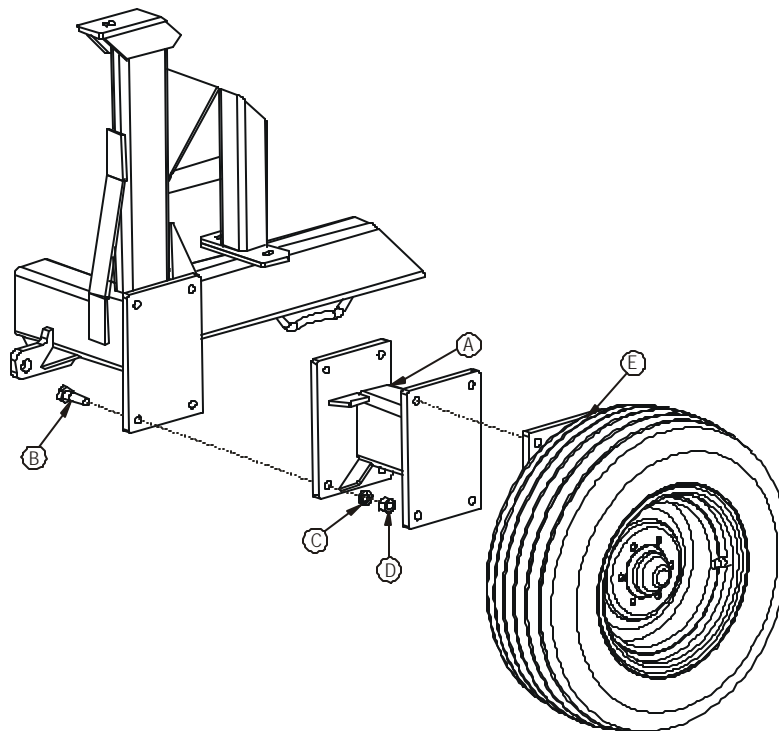


1.0 Assembly and Installation Instructions

For clarity, several parts of Bale Pro do not appear in the following figures.

1. First, install the axle extension on the right hand side of the Bale Pro 7000, which the grain tank will be mounted onto. Jack up the Bale Pro and securely support it with stands. Remove the $\frac{3}{4}$ " nuts and bolts that attach the axle mounting plate to the frame. Then install the axle extension (A - see Figure 1) using the supplied $\frac{3}{4}$ " x 2-1/2" grade 8 bolts (B) and $\frac{3}{4}$ " grade 8 nuts and lock washers (C&D). Note: Torque Grade 8 bolts to a minimum 200 ft lbs. and no more than 240 ft lbs. Next reinstall the axle mounting plate and wheel assembly (E) onto the axle extension using the existing $\frac{3}{4}$ " x 2-1/2" grade 5 bolts, nuts and lock washers. Jack up the Bale Pro, remove the stands, and lower the Bale Pro onto the ground.

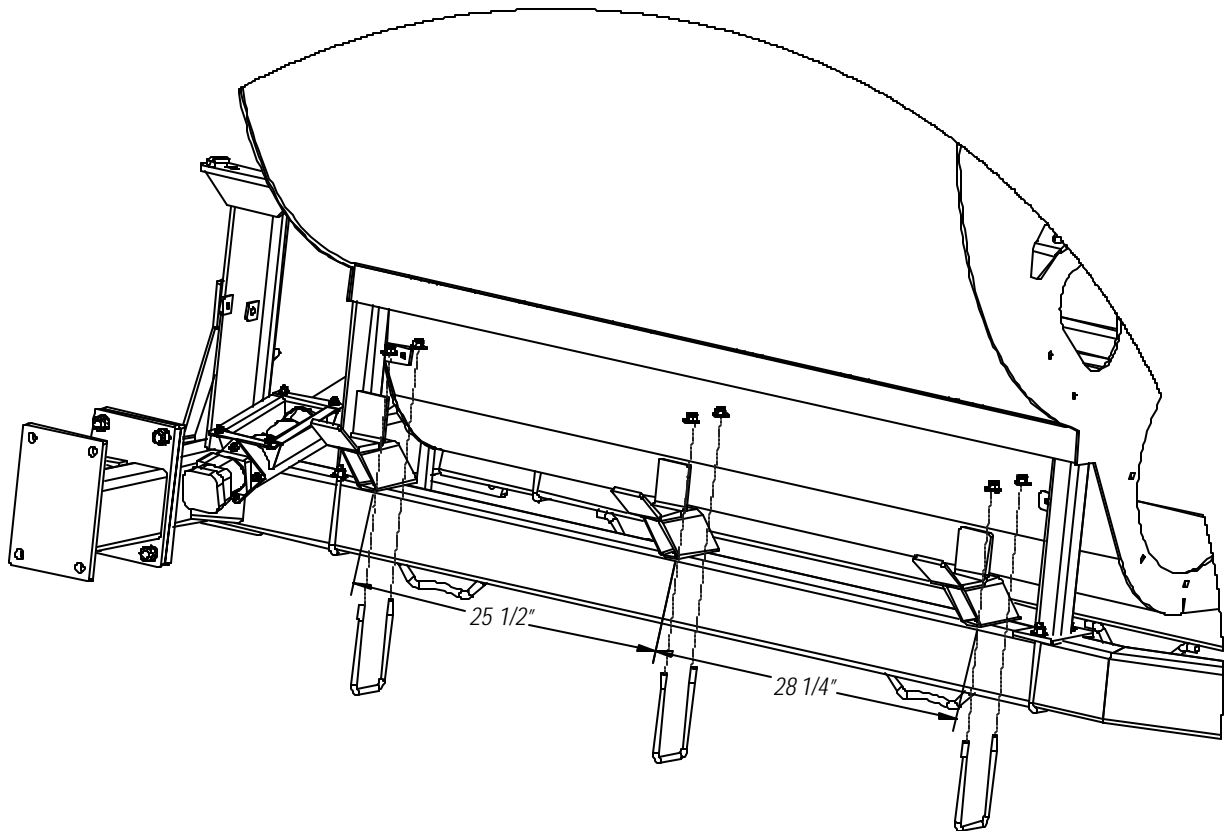
Figure 1 - Installing Axle Extension



2. On the right hand side of the Bale Pro 7000, (see Figure 2) install the tank mounts (A) and with $\frac{1}{2}$ " locknuts (C). Use the dimensions listed on the diagram for the location of these mounts.

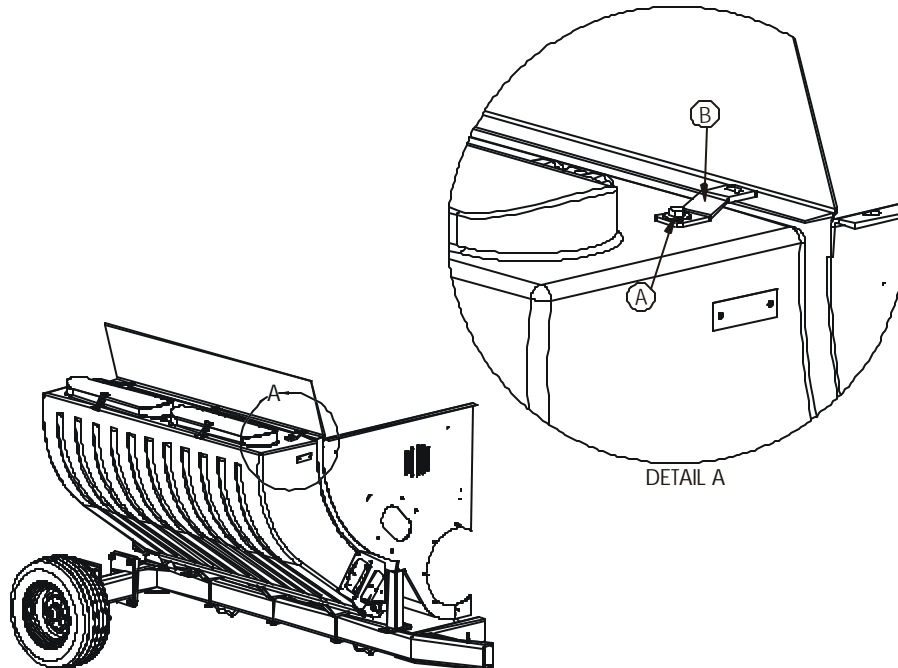
*Locate middle mount bracket at centre of tank. Space others out according to drawing below.

Figure 2 - Installing Tank Mounts



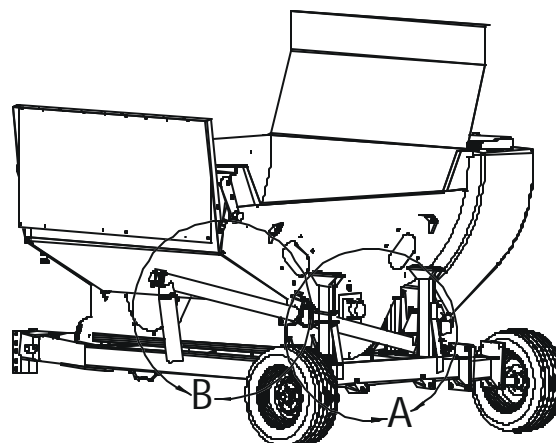
3. Remove the top three $\frac{1}{2}$ " x 1-1/2" bolts from the right hand side of the Bale Pro bale deflector. Attach the three tabs (B) onto the Bale Pro with these bolts. (Figure 3, Detail A)

Figure 3 - Attaching Grain Tank to Bale Pro

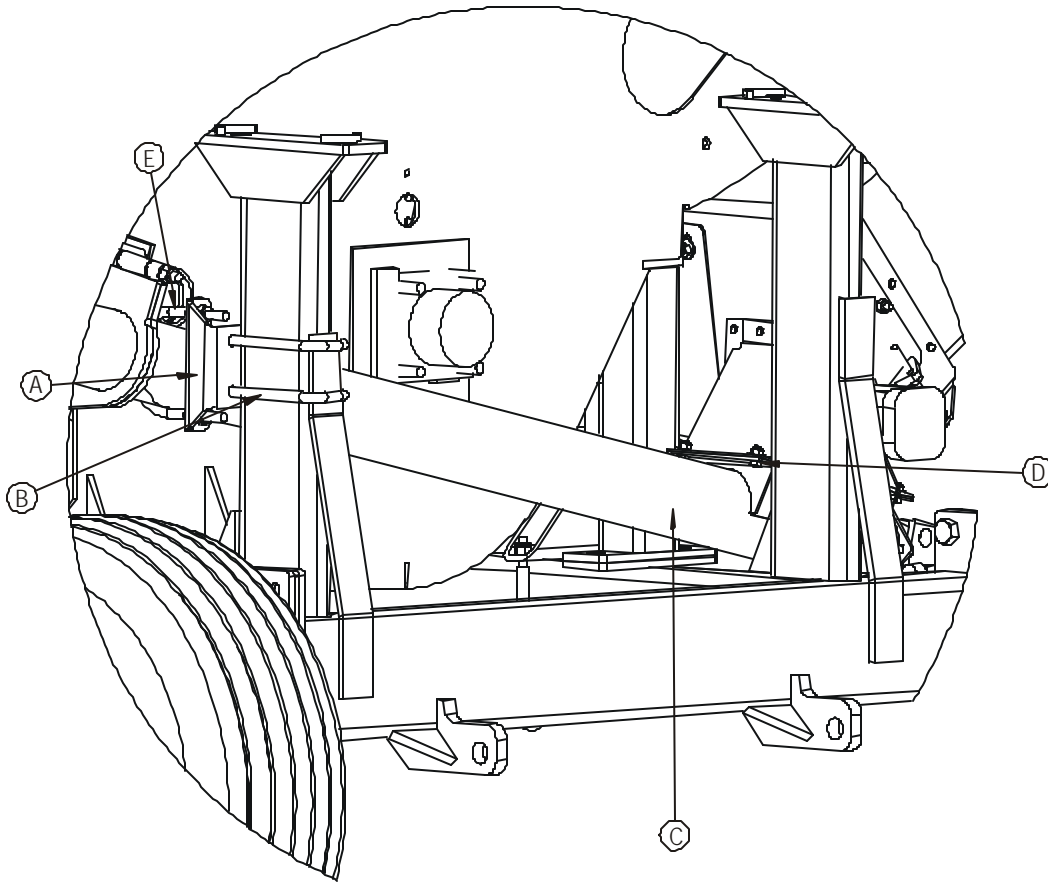


4. Remove the three bolts (A) from the grain tank. A front end loader or forklift will be required to lift the tank into place on the Bale Pro, first fitting the bottom of the tank into the tank mounts (installed in #2). Then rotate the tank up into place against the Bale Pro tub wall, aligning the tabs with the bolt holes on the grain tank (Figure 3). Note: The front of the grain tank should be located approximately 1" behind the front of the Bale Pro tub. Use the three $\frac{1}{2}$ " x 1-1/2" bolts (A), $\frac{1}{2}$ " flat washers, and $\frac{1}{2}$ " locknuts to attach the grain tank to the tabs.

Figure 4 - Attaching Discharge Auger



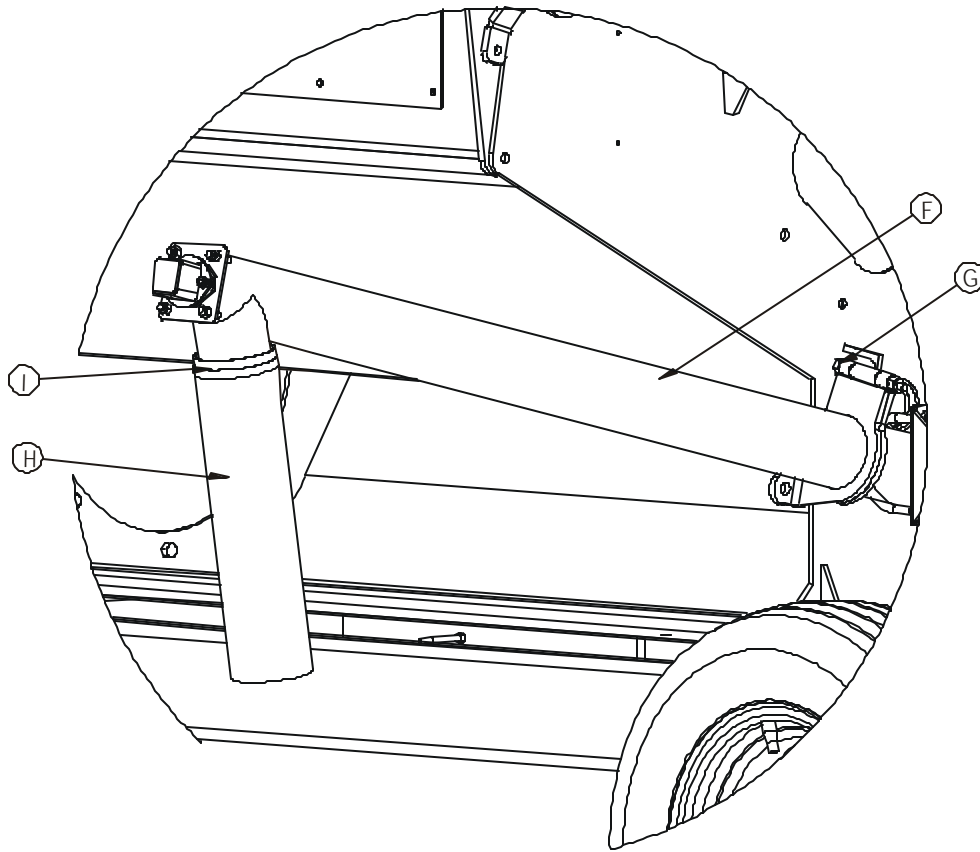
5. (See Figure 4, Detail A) Attach the discharge auger support (A) to the upright tubing using two $\frac{1}{2}$ " x 2" x 7" U-bolts (B) and four $\frac{1}{2}$ " lock washers and regular nuts.



DETAIL A

6. Attach bottom discharge auger (C) to the bottom of the tank using the four $\frac{5}{16}$ " x $\frac{3}{4}$ " bolts (D), flat washers, and locknuts.
7. Install the $\frac{1}{2}$ " x 4-1/2" x 6" round U-bolt (E), mating the bottom discharge auger (C) to the auger support (A) with two $\frac{1}{2}$ " locknuts. Do not overtighten the locknuts; this will damage the auger!
8. (See Figure 4, Detail B) Mount the top discharge auger (F) to the bottom discharge auger using the $\frac{1}{2}$ " x 5" bolt (G) with $\frac{1}{2}$ " locknut. Do not tighten this nut. The top auger must be allowed to rotate upwards.

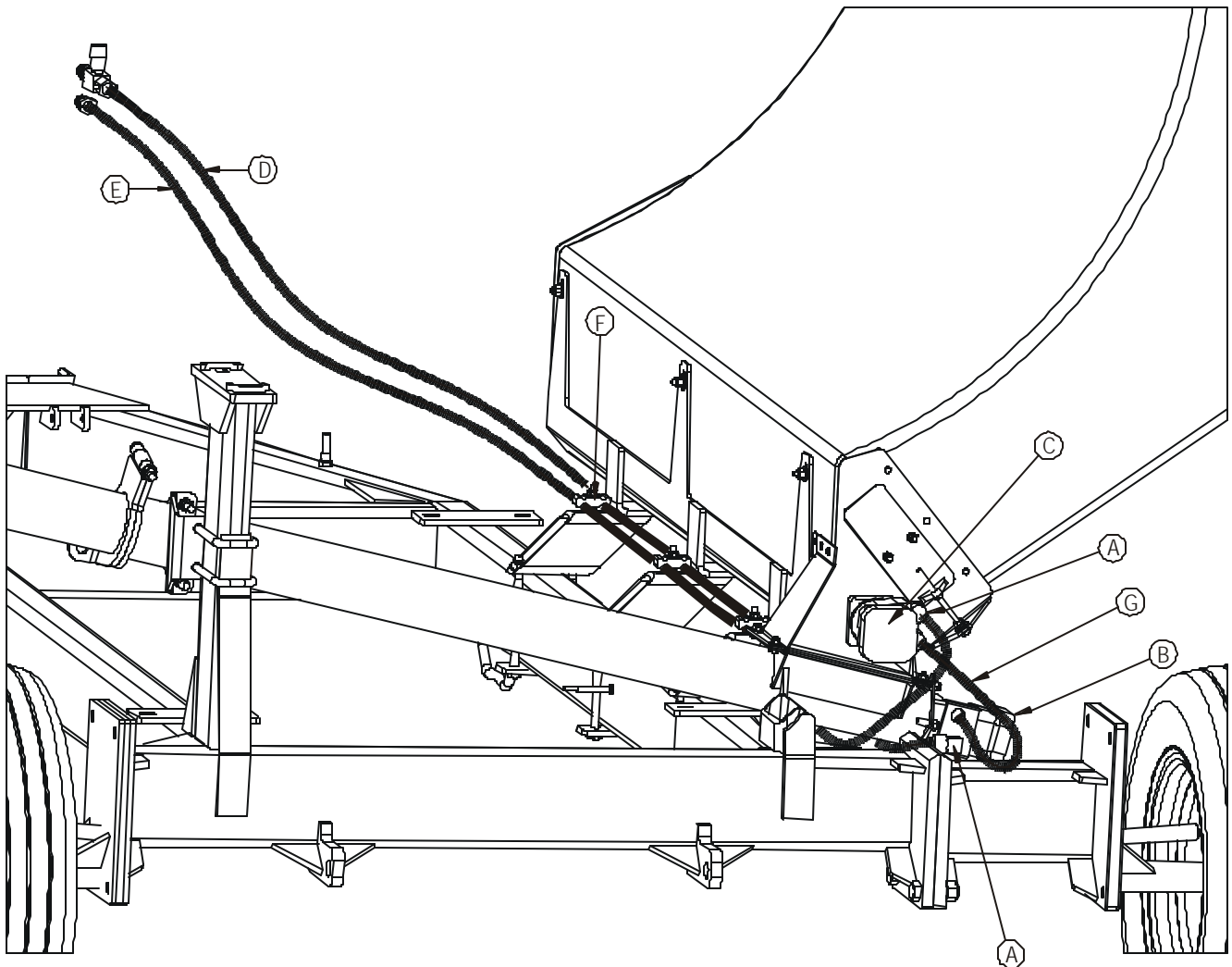
9. Attach the auger spout (H) to the top discharge auger (F) with the hose clamp (I).



DETAIL B

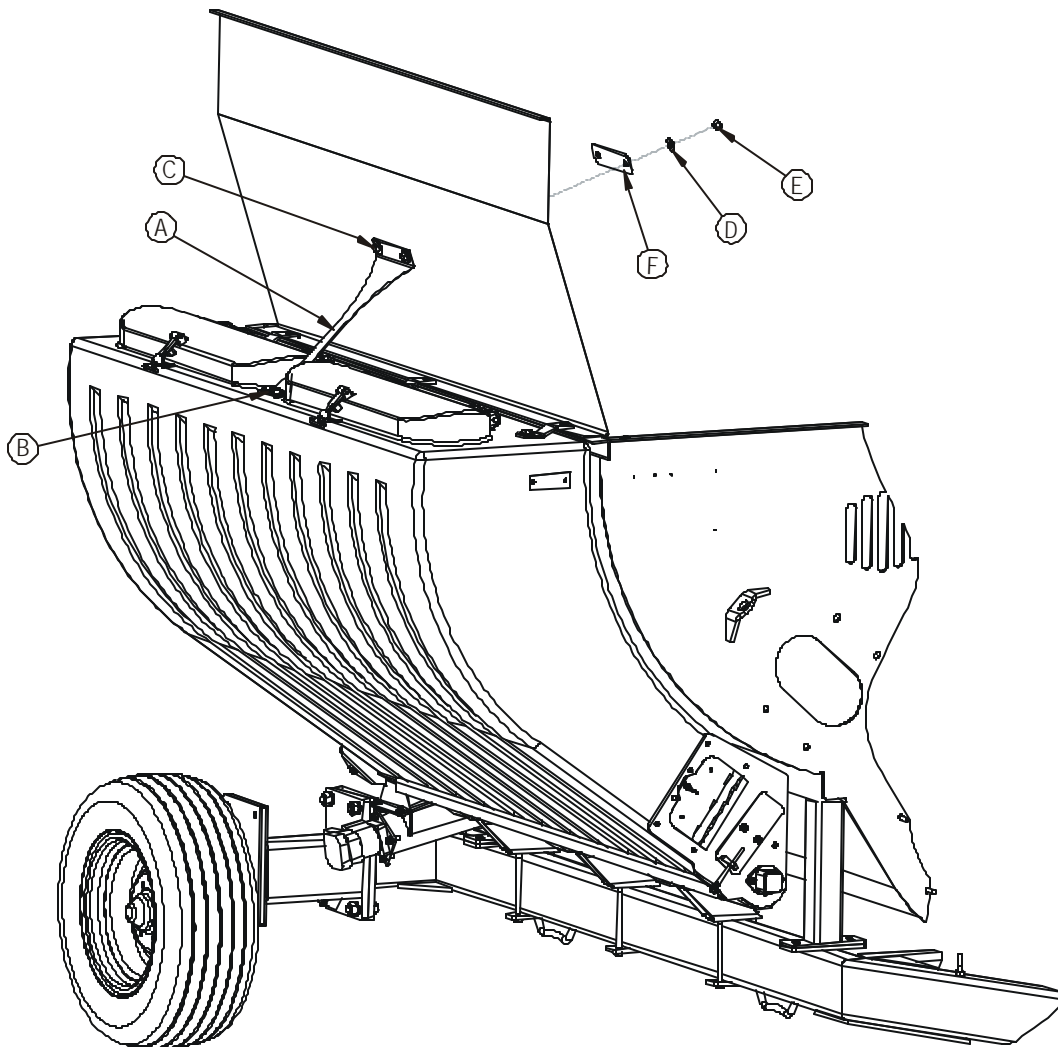
10. Lay out the hydraulic hoses and fittings as shown in Figure 5. Install one 90° elbow fitting (A) to the bottom port of the auger motor (B) pointing inward. Install the other two 90° elbow fittings (A) on the tank motor (C) pointing to the rear. Attach the 200" long hydraulic hose equipped with the flow control valve (D) to the fitting on the bottom port of the auger motor (B). Attach the 18" long hose (G) to the top port of the auger motor (B) and the fitting on the bottom port of the tank motor (C). Now attach the remaining 200" long hose (E) to the fitting on the top port of the tank motor (C). Note: Make sure thread sealant is used on all pipe thread connections. Attach the hoses to the Bale Pro using the three hose clamps (F) and 5/16" flat washers and locknuts.

Figure 5 - Installing Hydraulics



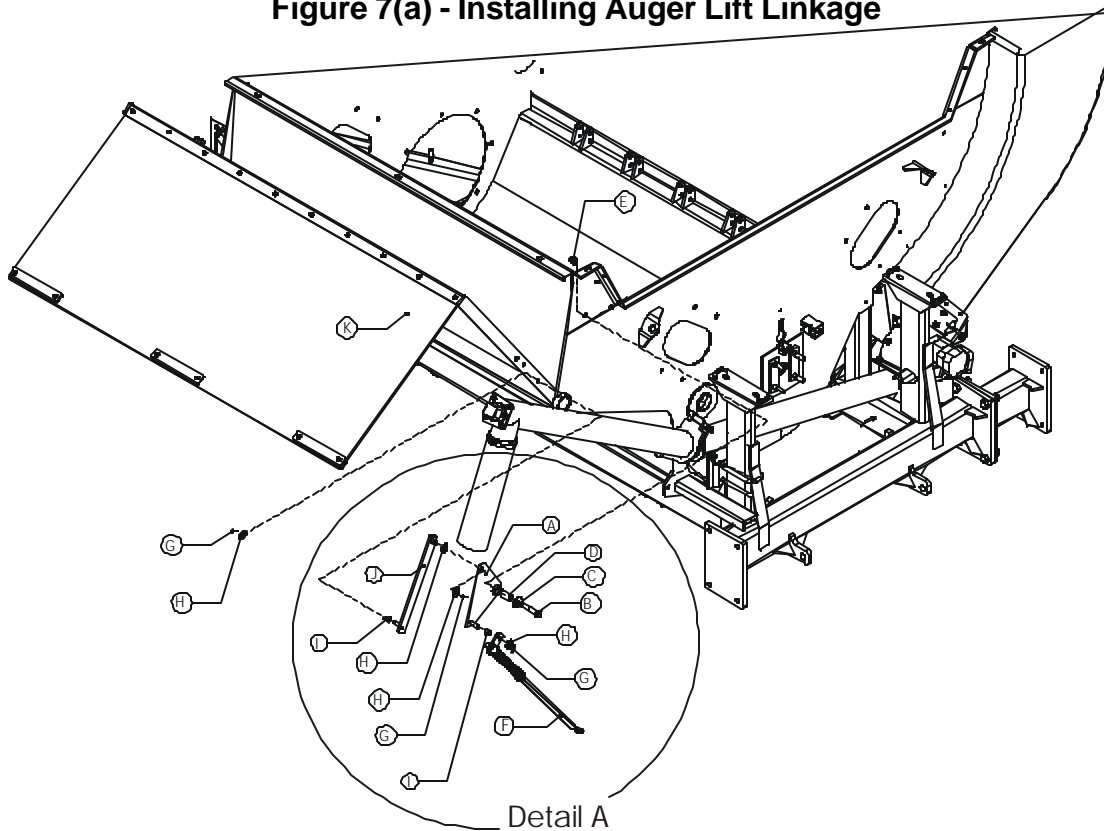
11. Remove the two $\frac{1}{2}$ " x 1-3/4" bolts, flat washer and locknut (B) located between the two lids on the top of the grain tank (See Figure 6). Install the tank support bracket (A) onto the tank and reinstall the two $\frac{1}{2}$ " x 1-3/4" bolts (B). Using the bracket as a template, drill two $\frac{1}{2}$ " diameter holes into the Bale Pro bale deflector. Attach the tank support bracket (A) to the Bale Pro with two $\frac{1}{2}$ " x 1-1/4" bolts (C), four $\frac{1}{2}$ " flat washers (D) and two $\frac{1}{2}$ " locknuts (E) with the backing plate (F) mounted on the inside of the Bale Pro tub.

Figure 6 - Attaching Tank Support Bracket



12. With the Bale Pro deflector in the raised position attach the auger pivot plate (A) as shown in Figure 7 using one 5/8"x3" bolt (B), 5/8" flat washer (C), 1" bushing (D) and 5/8" nylock nut (E).

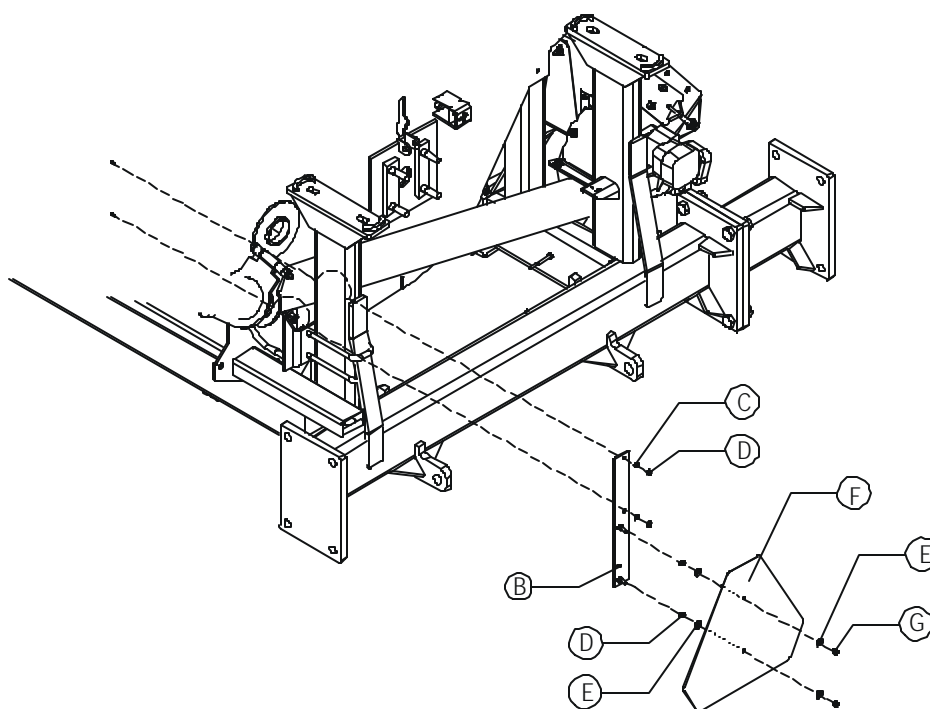
Figure 7(a) - Installing Auger Lift Linkage



13. Attach the pivot bar (J) to the Bale Pro deflector (K) as indicated using one 3/4" bushing (I) on the outside of the deflector, and a 1/2" flat washer (H) and 1/8"x1" cotter pin (G) on the inside of the deflector.
14. Attach the pivot bar (J) to the pivot plate (A) as indicated using a 1/2" flat washer (H) on either side of the pivot plate and fastening with one 1/8"x1" cotter pin (G).
15. Place 3/4" bushing (I), over the peg on the auger pivot plate (A). Manually manipulated the discharge auger such that the mount hole in lift linkage (F) aligns with the auger pivot plate peg. The deflector may have to be adjusted as well to line up the hole properly. Fasten linkage (F) with a 1/2" flat washer (H) and a 1/8"x1" cotter pin (G).

16. Remove the SMV sign from the rear of the Bale Pro.
17. (See Figure 8) Install the SMV bracket (B) to the existing bolts on the Bale Pro using two 1/4" lock washers (C) and two 1/4" hex nuts (D).
18. Thread on two 1/4" hex nuts (D) onto the welded bolts of sign mount (B), followed by two 1/4" flat washers (E).

Figure 8 - Attaching the Slow Moving Vehicle Sign

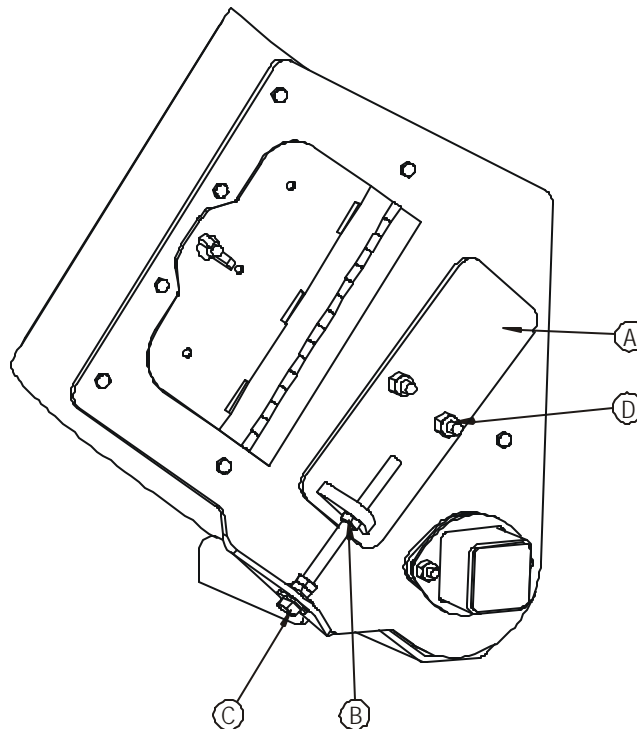


19. Install the SMV sign (F) on the welded bolts of sign mount (B) and fasten with two 1/4" flat washers (E) and two 1/4" nylock hex nuts (G).

2.0 Operating Instructions

1. Inspect setting of auger slide control inside the tank through the inspection door located at the front of the tank. Different settings are required for different feed types. Poor flowing, low density feed such as chop should have a wide opening. Better flowing, high density feed such as cereal grains should have a narrow opening.
2. If required, (See Figure 10) adjust the auger slide control (A) in either direction by loosening the top jam nut (B) and turning the 3/8" x 5" hex bolt (C) until an appropriate opening is achieved. If necessary, slightly loosen the two 1/2" locknuts (D) so the auger slide control (A) can move easily. Tighten the jam nut. Repeat this setting at the rear of the tank so that the opening is uniform across the tank.

Figure 10 - Adjusting Auger Slide Control



3. Fill the grain tank through the access lids located on top of the tank. When the Bale Pro 7000 is loaded with two bales, refer to Chart 1 for maximum recommended volume of product in the grain tank.
4. Ensure that the deflector is positioned such that the two parts of the discharge auger are engaged properly. Damage to the discharge auger may occur if it is only partially engaged.

5. Activate tractor hydraulics to operate the grain tank augers.

Note: If the augers do not rotate, reverse the flow of hydraulic fluid. A check valve is incorporated into the hydraulic circuit to prevent the augers from turning backwards.

6. To control the feed rate from the augers, simply adjust the flow control valve located near the Pioneer fitting connected to the tractor. Opening the valve (screwing the control knob outwards) increases the auger speed, thereby increasing the feed rate.
7. The EZ Feed HD-A can now be operated simultaneously while processing a round bale with the Bale Pro 7000 to deliver a high quality feed mixture.

3.0 Maintenance Instructions

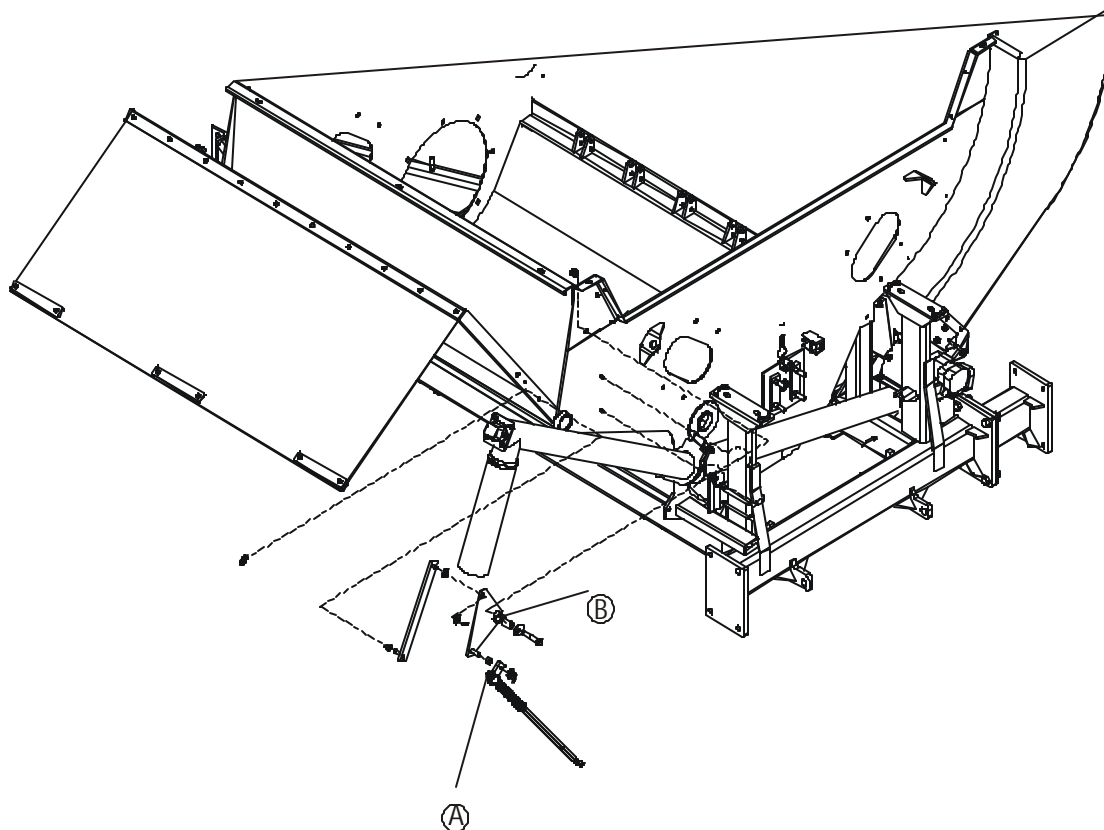
A. General Maintenance

1. Be sure to follow all maintenance procedures for your Bale Pro 7000.
2. During long term or seasonal storage, it is recommended to keep the unit sheltered or covered with a tarpaulin. This will protect the tank from the sun's ultraviolet rays, which will cause the plastic to deteriorate.

B. Lubrication

There are two lubrication joints on the EZ Feed HD. The first is located on the auger lift linkage (A, shown in Figure 11). This must be greased every 24 hours. The second is located on the pivot plate swivel point (B, shown in Figure 11).

Figure 11 - Lubrication Point

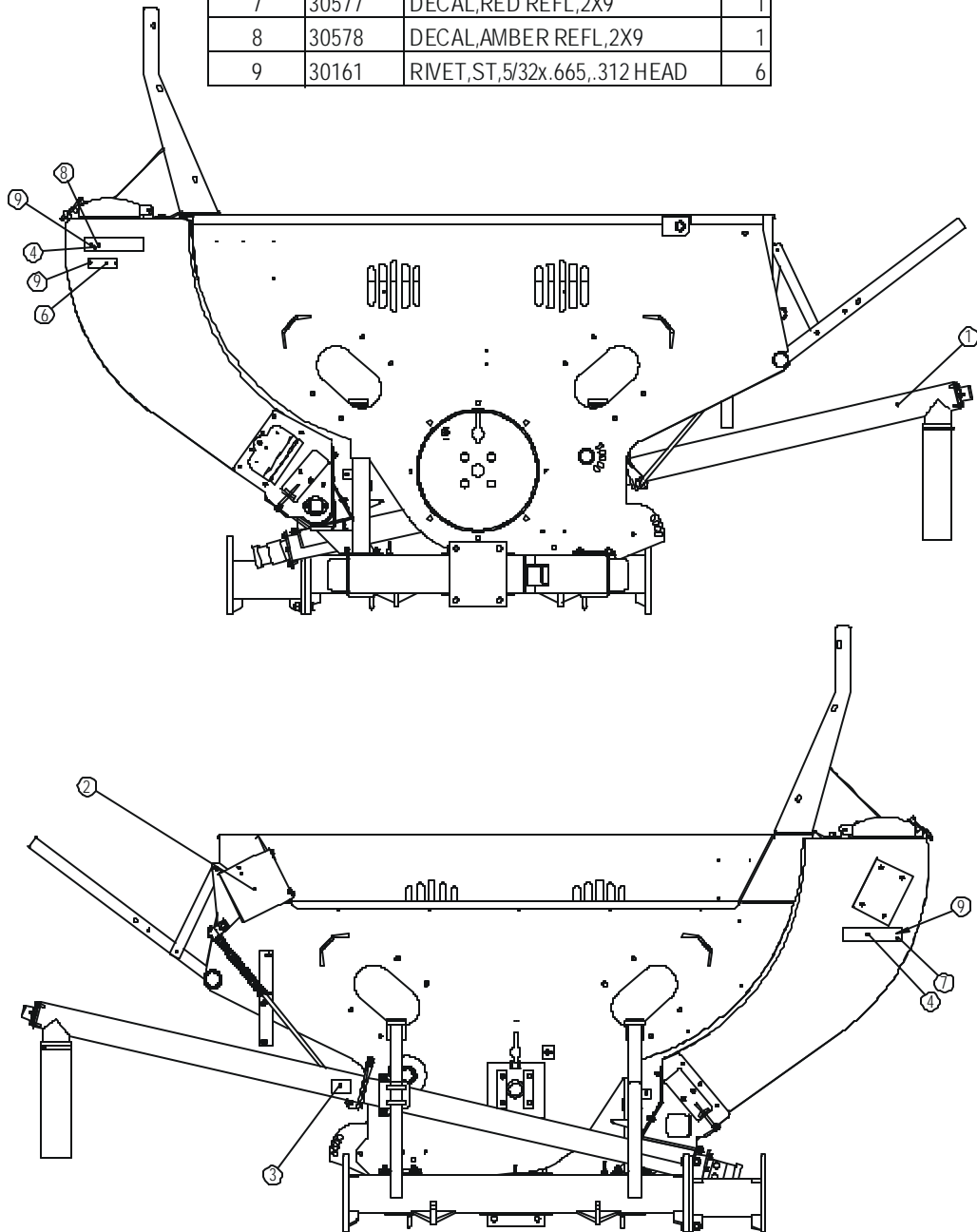


This page left intentionally blank.

4.0 Parts Information

4.1 Main Assembly (Part No. EZFEED-3 (89037))

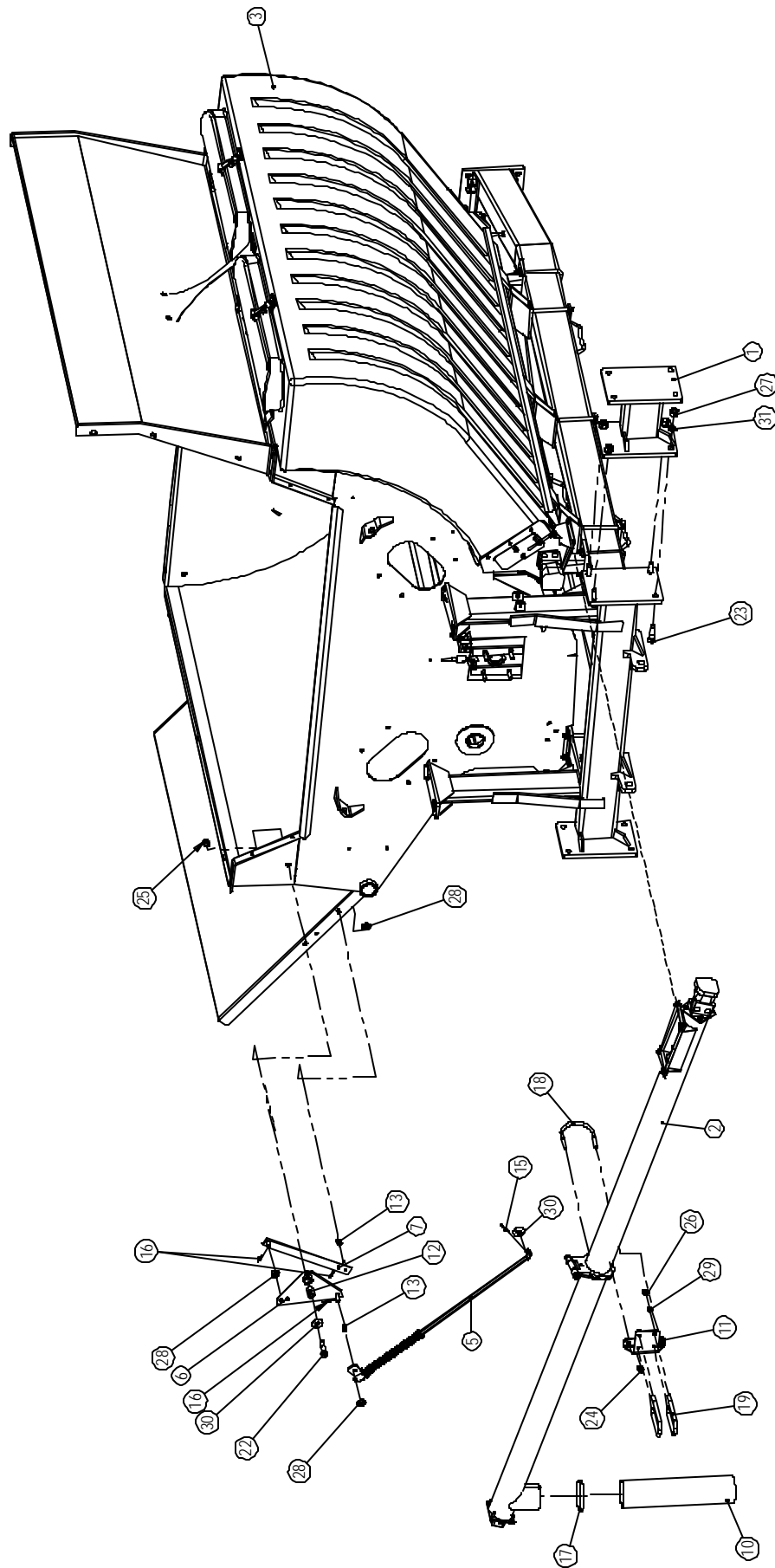
ITEM NO.	PART NO.	DESCRIPTION	QTY.
1	49509	ASSY, EZFEED, COMMON	1
2	49510	ASSY, SMV_LGTBKT, HIGHLINE	1
3	E3946	DECAL, DANGER, PINCH POINT	1
4	E5667	PLATE, MOUNT, DECAL	2
5	E6978	MANUAL, EZFEED-3	1
6	30208	PLT, SERIAL#	1
7	30577	DECAL, RED REFL, 2X9	1
8	30578	DECAL, AMBER REFL, 2X9	1
9	30161	RIVET, ST, 5/32x.665, .312 HEAD	6

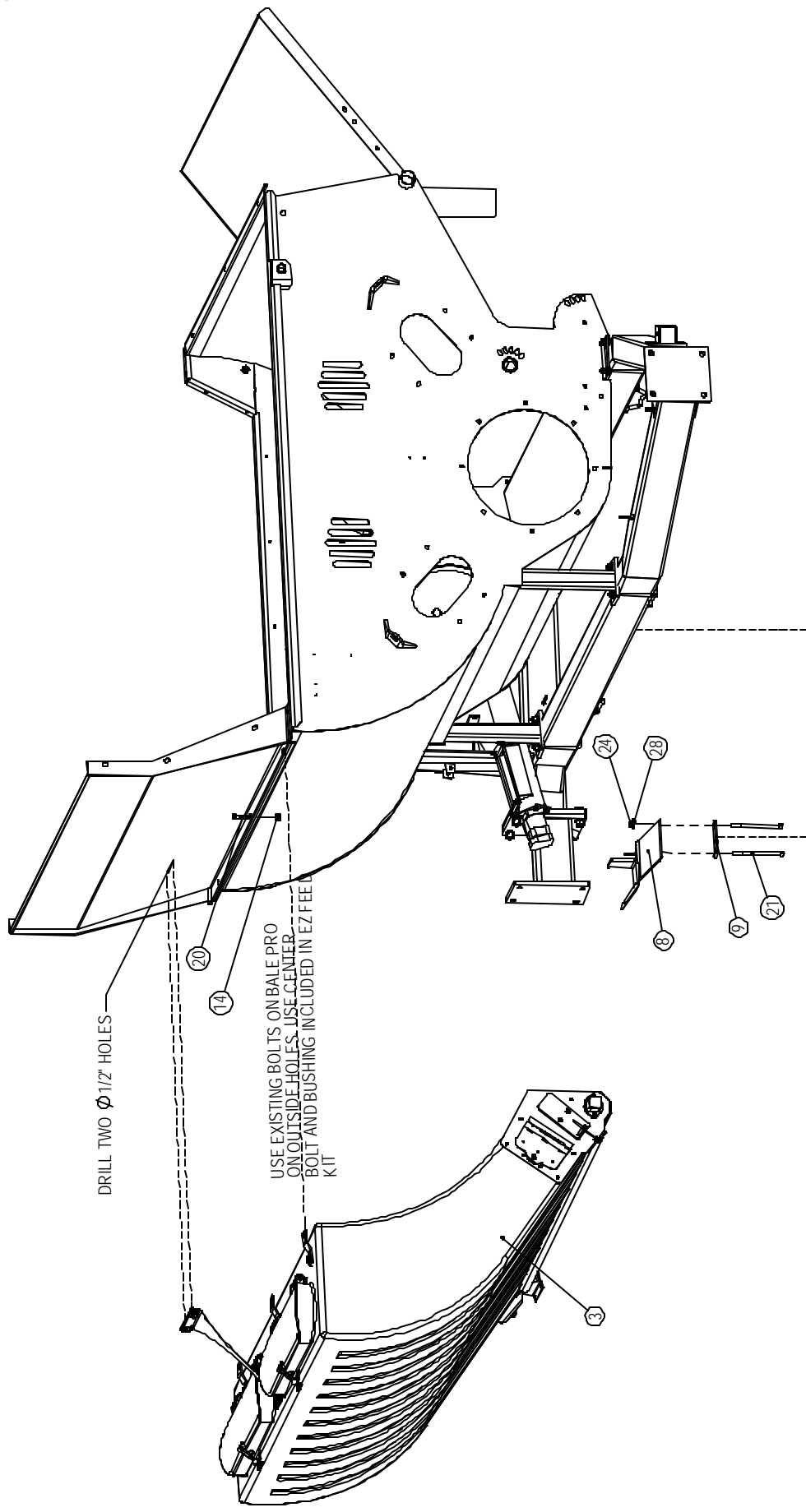


4.2 EZ Feed Assembly (Part No. 49509)

ITEM NO.	PART NO.	DESCRIPTION	QTY.
1	49065	EXTENSION, AXLE, SHORT, BP	1
2	49138	AUGER,BREAK-AWAY, DISCHARGE	1
3	49147	TANK,GRAIN,ASSEMBLY	1
4	49148	HYD,EZ FEED,BP7000	1
5	49149	LINKAGE,LIFT,AUGER	1
6	49385	WLDT,PIVOT PLATE, AUGER	1
7	49386	WLDT,PIVOT BAR,AUGER	1
8	49620	WLDT,MOUNT,TANK,6X4	3
9	E4414	PLT, MOUNT, TANK	3
10	E4429	SPOUT, DISCHARGE, AUGER	1
11	E5500	PLT,MOUNT,AUGER,DISCHARGE	1
12	E6302	PIPE,SMLS,1x.188x1-9/16L	1
13	E6308	PIPE,SMLS,3/4x.120x11/16L	2
14	E6708	PIPE,SMLS,1x.188x7/16L	1
15	31289	PIN,COTTER,3/16X1-1/2	1
16	31450	PIN,COTTER,1/8X1	3
17	31641	CLAMP,HOSE	1
18	31611	BOLT,U,RD,1/2-13,4-1/2x6,2-1/2	1
19	31675	BOLT,U,SQ,1/2-13,2x7,1-3/8	2
20	31017	BOLT,HEX,1/2X1-3/4,UNC,GR5,ZP	1
21	31478	BOLT,HEX,1/2X7-1/2,GR5,UNC,ZP	6
22	31336	BOLT,HEX,5/8X3,UNC,GR5,ZP	1
23	31315	BOLT,HEX,3/4X2-1/2,GR8,ZP	4
24	31173	NUT,NYLOCK,1/2,UNC,ZP	8
25	31178	NUT,NYLOCK,5/8,UNC,ZP	1
26	31163	NUT,HEX,1/2,UNC,GR5,ZP	4
27	31777	NUT,HEX,3/4,UNC,GR8,ZP	4
28	31236	WASHER,FLAT,1/2,ZP	9
29	31244	WASHER,LOCK,1/2,ZP	4
30	31240	WASHER,FLAT,5/8,ZP	2
31	31246	WASHER,LOCK,3/4,ZP	4

NOTE: 49148 NOT SHOWN FOR CLARITY

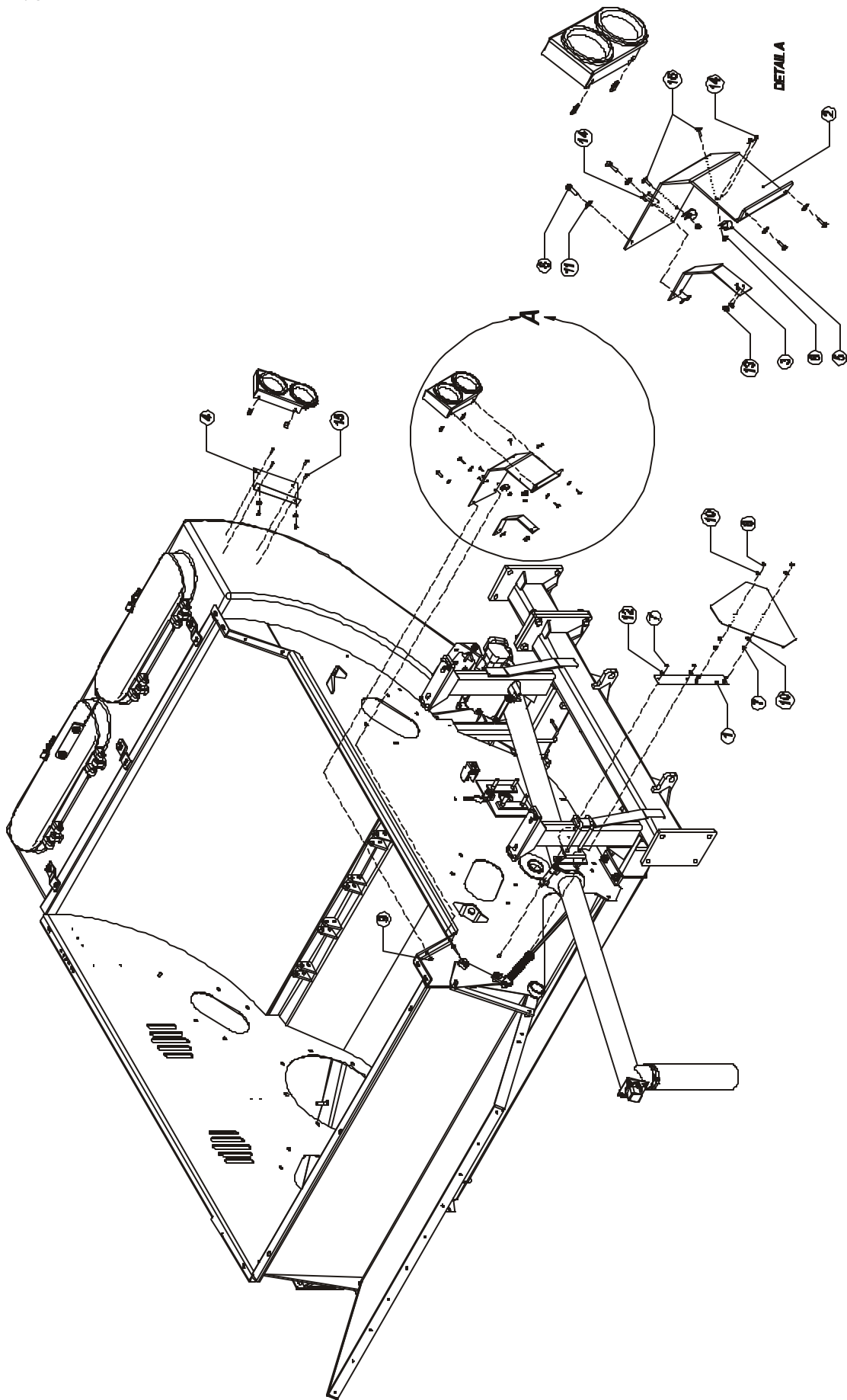




This page left intentionally blank.

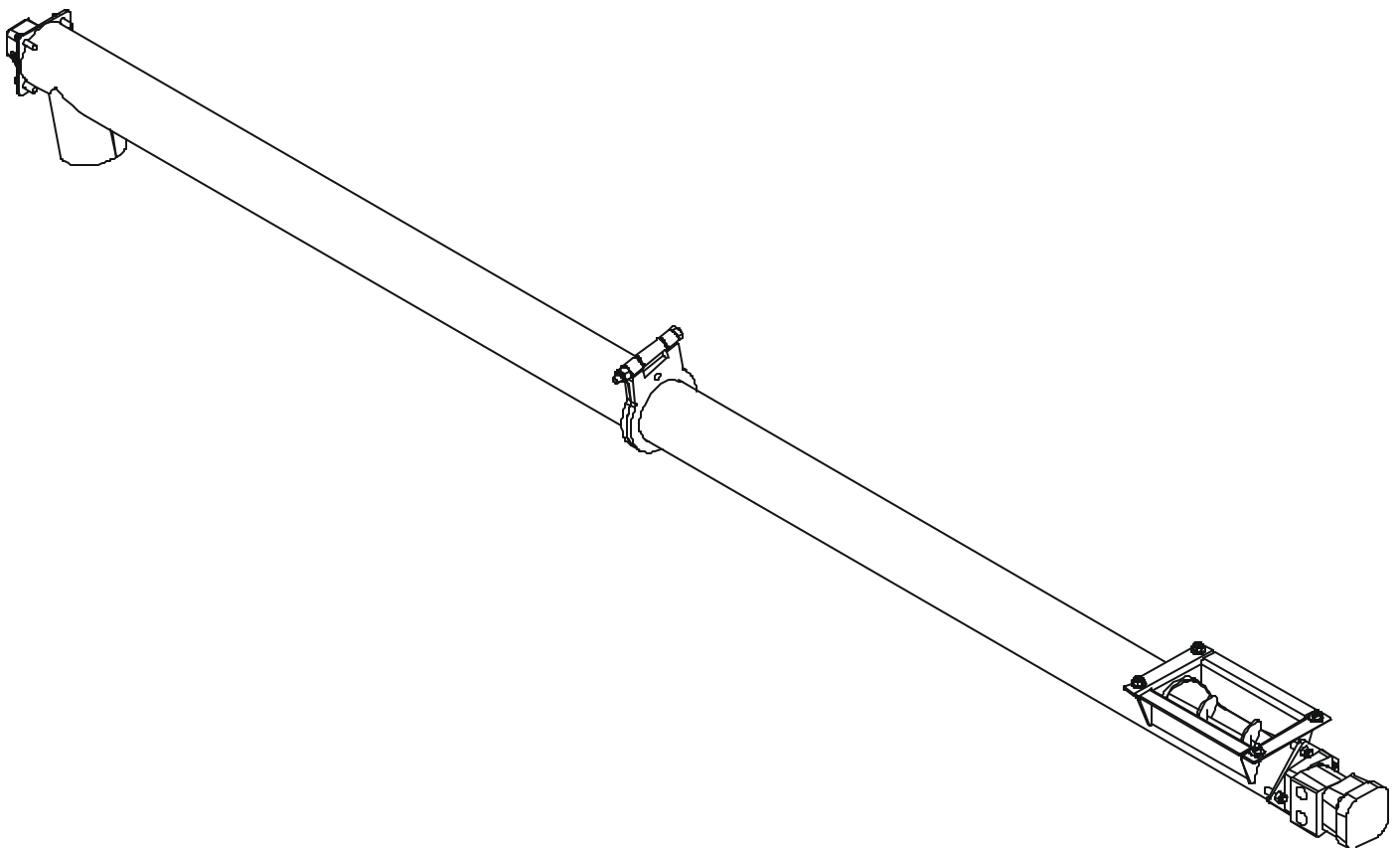
4.3 Slow Moving Vehicle Assembly (Part No. 49510)

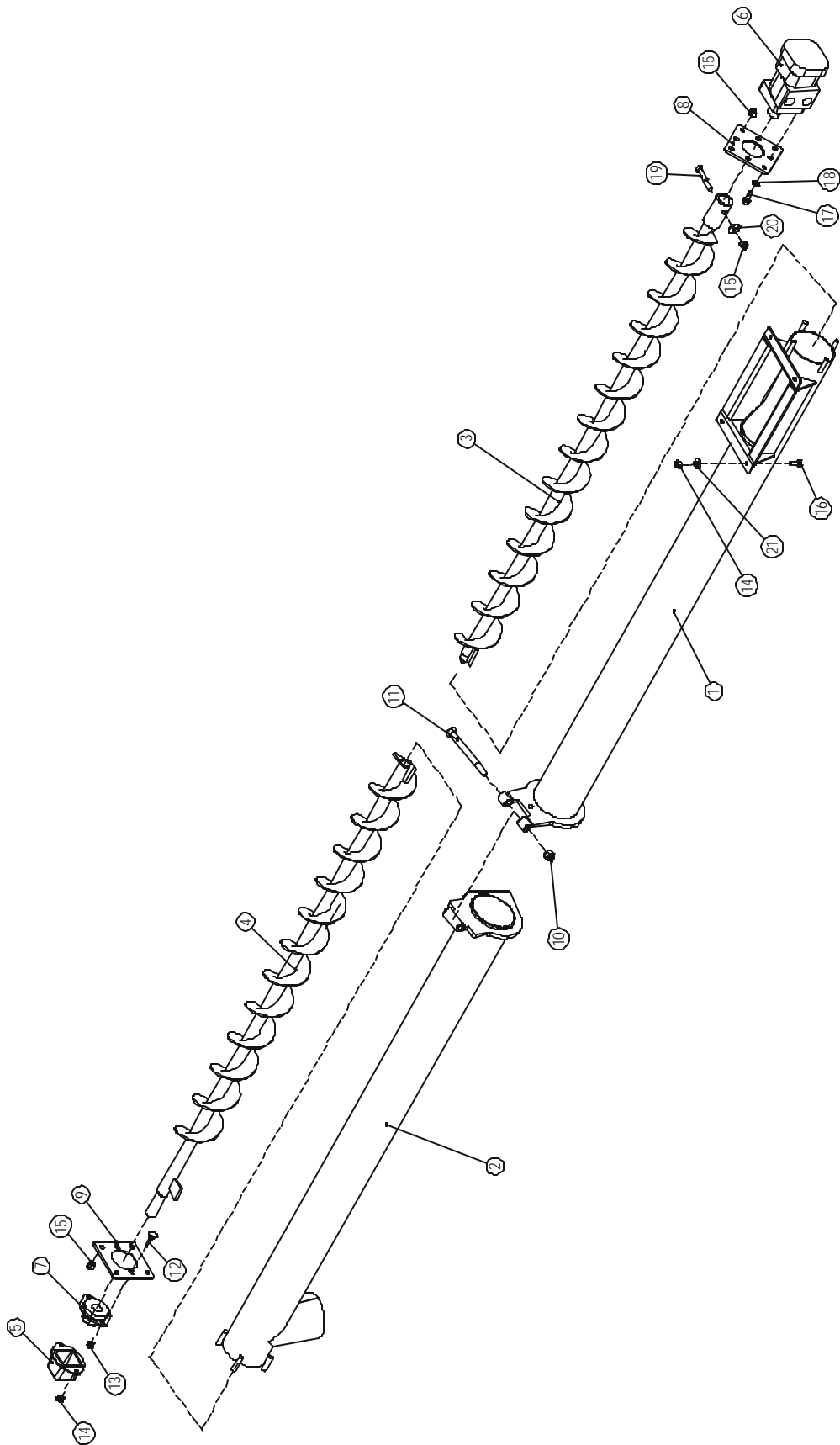
ITEM NO.	PART NO.	DESCRIPTION	QTY.
1	49391	WLDT,SMV SIGN MOUNT	1
2	E6309	PLT ,LIGHT, EXTENSION	1
3	E6310	RUBBER PAD,AUGER,1/8"	1
4	E6318	PLT,LIGHT, RHS	1
5	31650	ELEC,CLAMP,CABLE,3/4	2
6	31062	BOLT,HEX,5/16X1,UNC,GR5,ZP	2
7	31164	NUT,HEX,1/4,UNC,GR5,ZP	4
8	31174	NUT,NYLOCK,1/4,UNC,ZP	4
9	31177	NUT,NYLOCK,5/16,UNC,ZP	2
10	31237	WASHER,FLAT,1/4,ZP	4
11	31239	WASHER,FLAT,5/16,ZP	2
12	31245	WASHER,LOCK,1/4,ZP	2
13	31536	WASHER,FLAT,1/8,ZP	4
14	31739	RIVET,ST,3/16x.565,.375 HEAD	4
15	31779	SCREW,TAPPING,#14X1	4
16	37998	BOLT,CARR,1/4X3/4,UNC,GR5,ZP	2



4.4 Break-Away Discharge Auger Assembly (Part No. 49138)

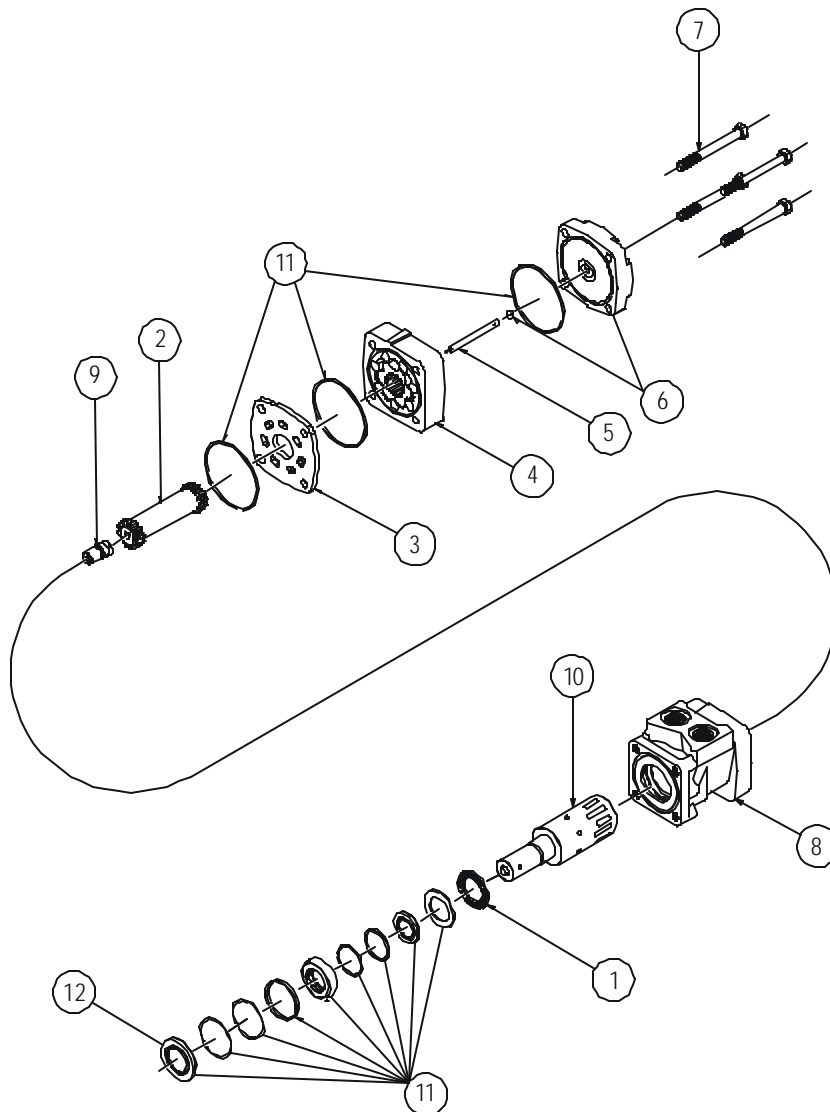
ITEM NO.	PART NO.	DESCRIPTION	QTY.
1	49198	HOUSING,AUGER,DISCHARGE,BOTTOM	1
2	49199	HOUSING,AUGER,DISCHARGE, TOP	1
3	49202	AUGER,DISCHARGE,BOTTOM	1
4	49203	AUGER,DISCHARGE, TOP	1
5	49144	GUARD,BEARING,7/8	1
6	30087	HYD,MOTOR,2.8,914RPM,1800PSI	1
7	31765	DRV,BRG,FLANGE ASSY, 7/8	1
8	E4423	PLT, MOUNT, MOTOR, DISCHARGE	1
9	E5095	PLATE,MOUNT,BEARING,AUGER	1
10	31173	NUT,NYLOCK,1/2,UNC,ZP	1
11	31028	BOLT,HEX,1/2X5,UNC,G R5,ZP	1
12	31775	BOLT,CARR,5/16X1-1/4,UNC,G R5,ZP	2
13	31347	NUT,HEX,5/16,UNC,ZP	2
14	31177	NUT,NYLOCK,5/16,UNC,ZP	6
15	31176	NUT,NYLOCK,3/8,UNC,ZP	9
16	31533	BOLT,HEX,5/16X3/4,UNC,GR5,ZP	4
17	31043	BOLT,HEX,3/8X1,UNC,G R5,ZP	4
18	31319	WASHER,LOCK,3/8,ZP	4
19	31830	BOLT,HEX,3/8X2-1/4,UNC,GR5,ZP	1
20	31351	WASHER,FLAT,3/8,ZP	1
21	31239	WASHER,FLAT,5/16,ZP	4





4.4.1 Hydraulic Motor Assembly (Part No. 30087)

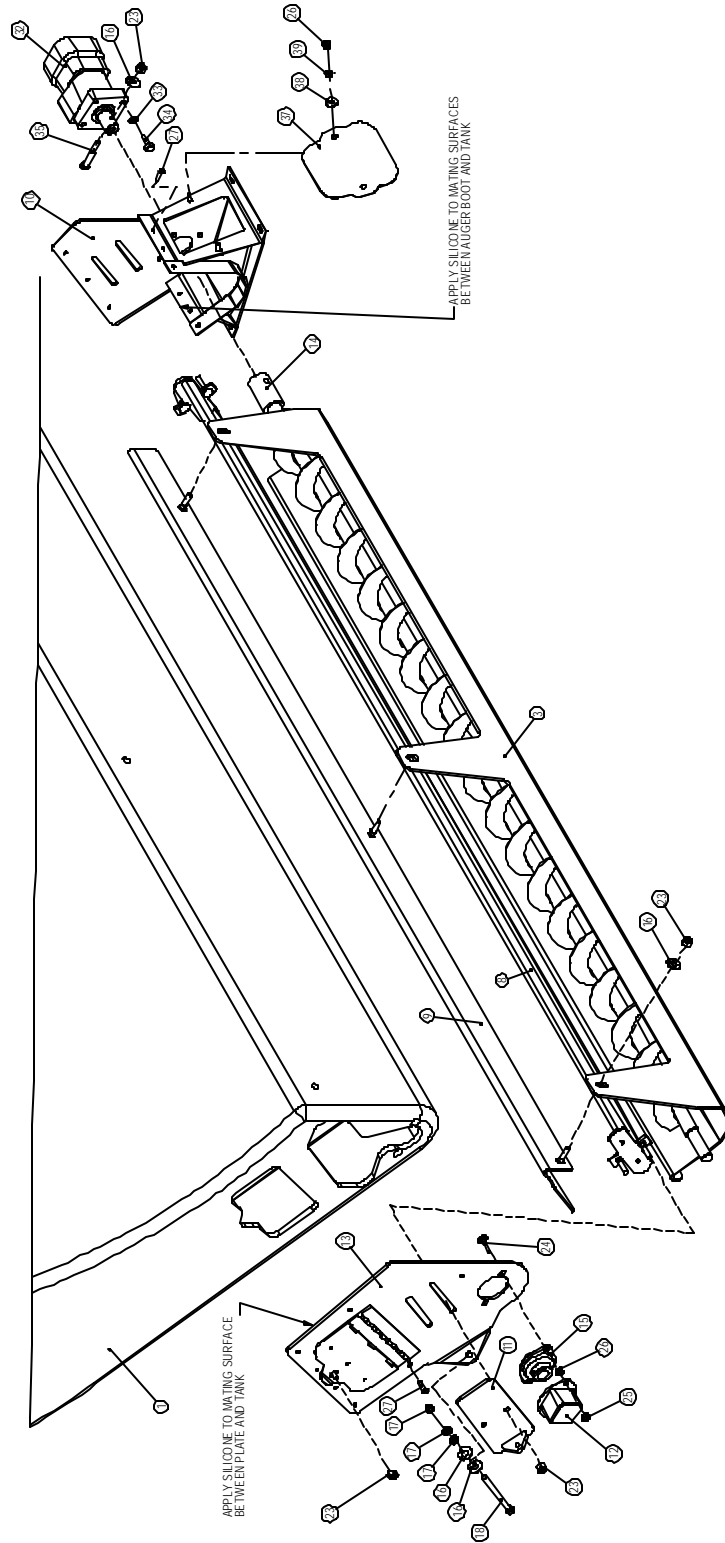
ITEM NO.	PART NO.	DESCRIPTION	QTY.
1	31833	HYD,THRUST BEARING	1
2	31843	HYD,DRIVE LINK	1
3	31835	HYD,WEAR PLATE	1
4	31844	HYD,ROTOR ASSEMBLY	1
5	31845	HYD,DRIVE LINK PIN	1
6	31838	HYD,ENDCOVER KIT	1
7	31846	HYD,BOLT,ENDCOVER	4
8	31840	HYD,HOUSING	1
9	31841	HYD,COOLING PLUG	1
10	31842	HYD,SHAFT	1
11	32735	SEAL KIT	1
12	31986	HYD,MOTOR,SEAL,WHITE	



This page left intentionally blank.

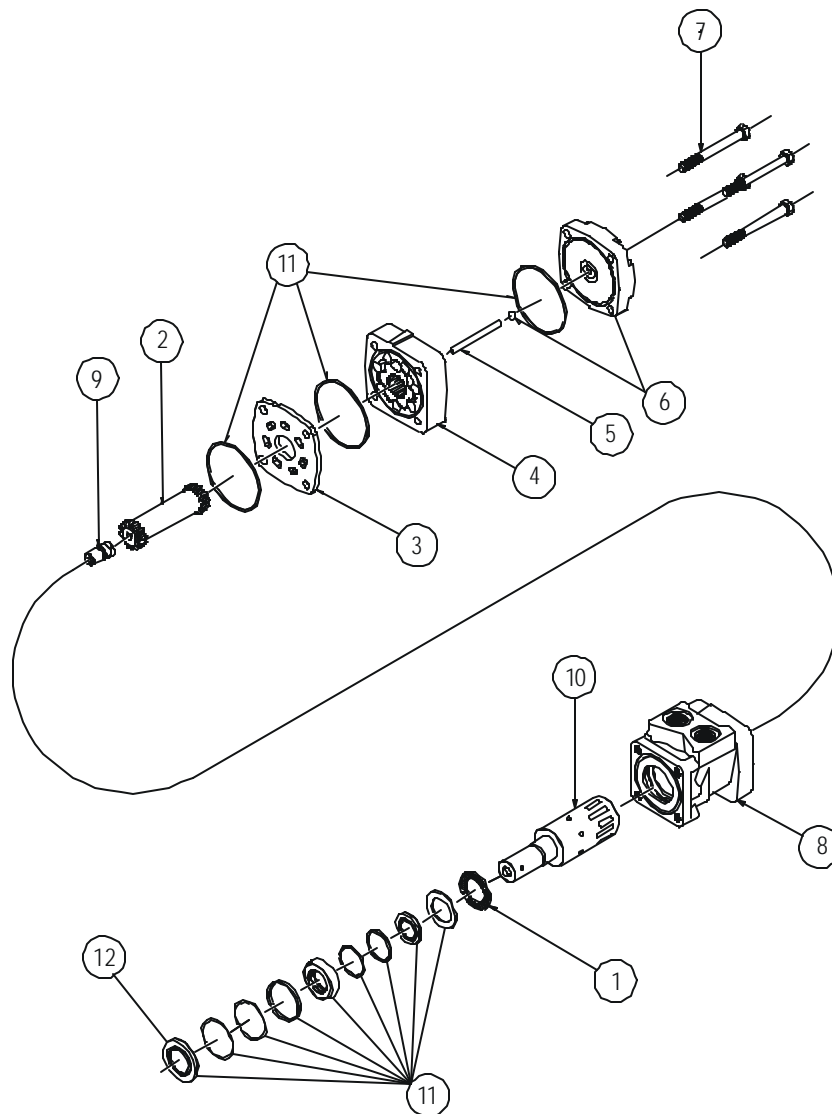
4.5 Grain Tank Assembly (Part No. 49147)

ITEM NO.	PART NO.	DESCRIPTION	QTY.
1	E4485	TANK,GRAIN,WITH HOLES	1
2	E4430	LID,TANK,GRAIN	2
3	E5060	PLATE,MOUNT,TANK,BASE	1
4	E5064	BRACKET,SUPPORT,TANK	1
5	E5509	PLATE,SUPPORT,TANK	1
6	E5510	TAB,MOUNT,TANK	3
7	49130	BRACKET,TANK,SUPPORT	1
8	49133	CONTROL,FEED,AUGER	1
9	49134	PLATE, TOP	1
10	49135	BOOT, AUGER,DISCHARGE	1
11	49143	CONTROL,FEED,TANK	2
12	49144	GUARD,BEARING, 7/8	1
13	49145	PANEL,FRONT, TANK	1
14	49146	AUGER,DRAG	1
15	31765	DRV,BRG,FLANGE ASSY, 7/8	1
16	31351	WASHER,FLAT,3/8,ZP	8
17	31768	NUT,HEX,JAM,3/8,UNC, GR5,ZP	6
18	31769	BOLT,HEX,3/8X5,UNC, GR5,ZP,FT	2
19	31173	NUT,NYLOCK,1/2,UNC,ZP	7
20	31017	BOLT,HEX,1/2X1-3/4,UNC, GR5,ZP	5
21	31236	WASHER,FLAT,1/2,ZP	9
22	31332	BOLT,HEX,1/2X1-1/4,UNC, GR5,ZP	2
23	31176	NUT,NYLOCK,3/8,UNC,ZP	9
24	31775	BOLT,CARR,5/16X1-1/4,UNC, GR5,ZP	2
25	31177	NUT,NYLOCK,5/16,UNC,ZP	2
26	31347	NUT,HEX,5/16,UNC,ZP	4
27	31779	SCREW,TAPPING,#14X1	16
28	31780	SCREW,TAPPING,#8X5/8	10
29	31778	BOLT,HEX,1/4X6,UNC, GR5,ZP	4
30	31174	NUT,NYLOCK,1/4,UNC,ZP	4
31	31773	LATCH,RUBBER,3"	2
32	37989	HYD,MOTOR,10in3	1
33	31319	WASHER,LOCK,3/8,ZP	4
34	31043	BOLT,HEX,3/8X1,UNC, GR5,ZP	4
35	31830	BOLT,HEX,3/8X2-1/4,UNC, GR5,ZP	1
36	31782(.75)	SEALANT,SILICONE,300ML TUBE	1
37	E6123	COVER,ACCESS,AUGER	1
38	31239	WASHER,FLAT,5/16,ZP	2
39	31346	WASHER,LOCK,5/16,ZP	2



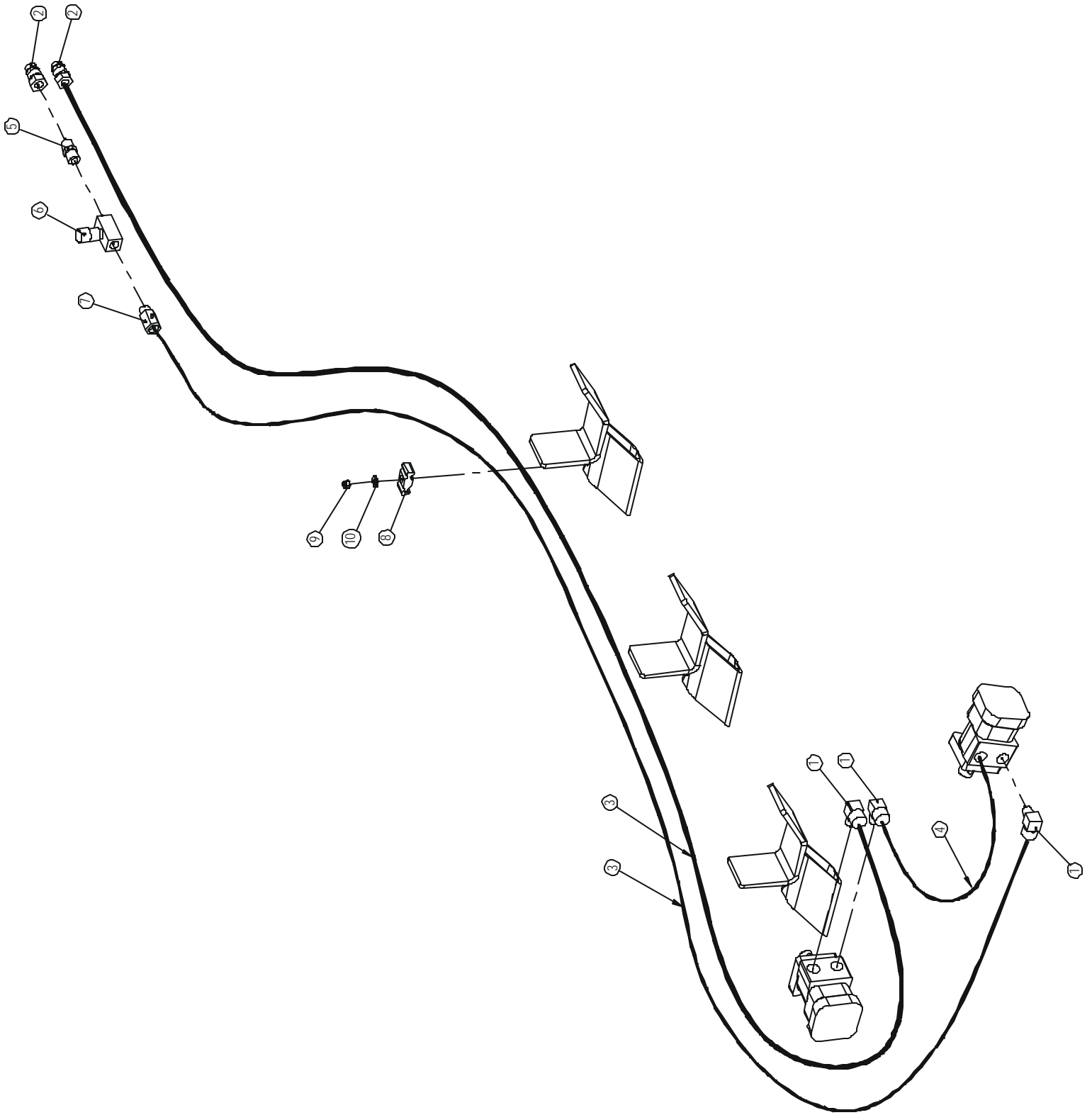
4.5.1 10 cu. in. Hydraulic Motor Assembly (Part No. 37989)

ITEM NO.	PART NO.	DESCRIPTION	QTY.
1	31833	HYD,THRUST BEARING	1
2	31834	HYD,DRIVE LINK	1
3	31835	HYD,WEAR PLATE	1
4	31836	HYD,ROTOR ASSEMBLY	1
5	31837	HYD,DRIVE LINK PIN	1
6	31838	HYD,ENDCOVER KIT	1
7	31839	HYD,BOLT,ENDCOVER	4
8	31840	HYD,HOUSING	1
9	31841	HYD,COOLING PLUG	1
10	31842	HYD,SHAFT	1
11	32735	SEAL KIT	1
12	31986	HYD,MOTOR,SEAL,WHITE	



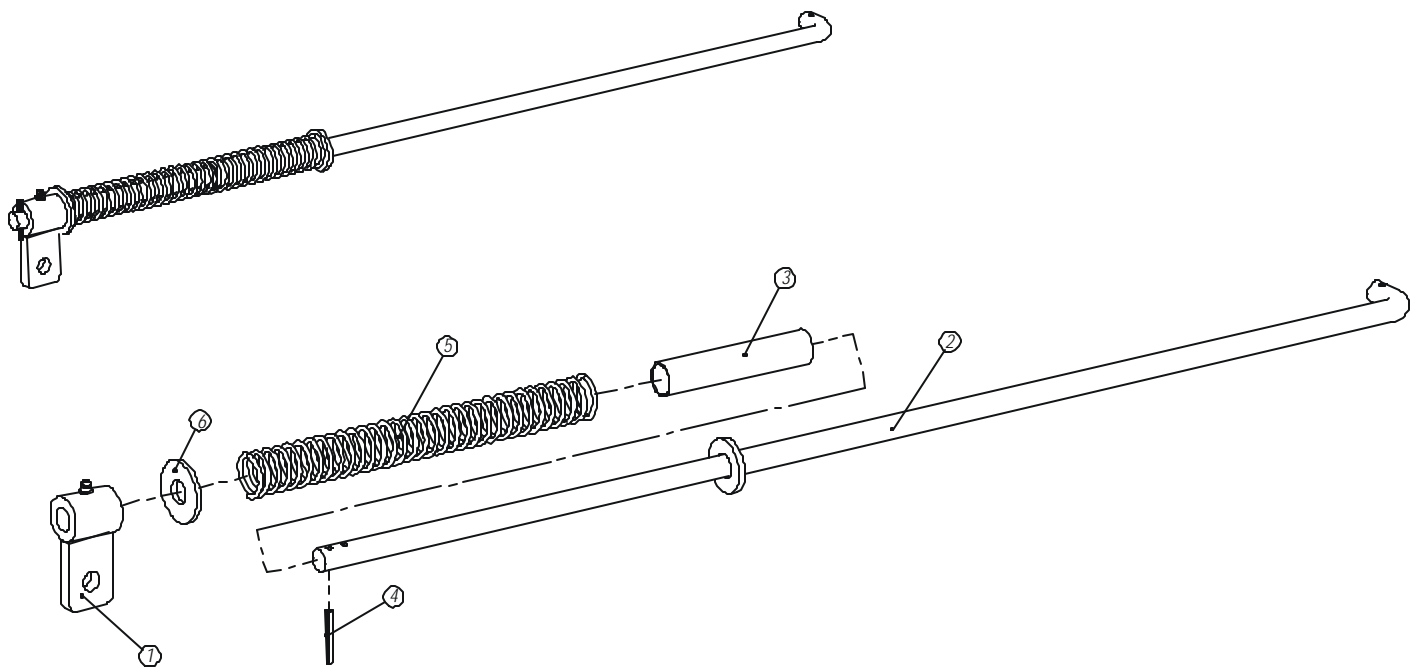
4.6 EZ Feed Hydraulics (Part No. 49148)

ITEM NO.	PART NO.	DESCRIPTION	QTY.
1	30145	HYD,FIT,ELBOW,10MB-8MJ90	3
2	30209	HYD,FIT,PIONEER,MALE,8FP	2
3	31676	HYD,HOSE,3/8X200,8MP-8JX	2
4	31776	HYD,HOSE,3/8X18,8FJX-10 MB	1
5	32082	HYD,FIT,ADAPTOR,8MP-8MP	1
6	32975	HYD,VALVE,CONTROL,FLOW,8FP	1
7	30560	HYD,VALVE,CHECK,08MP-08FP	1
8	30210	HOSECLAMP, 1/2	3
9	31177	NUT,NYLOCK,5/16,UNC,ZP	3
10	31239	WASHER,FLAT,5/16,ZP	3



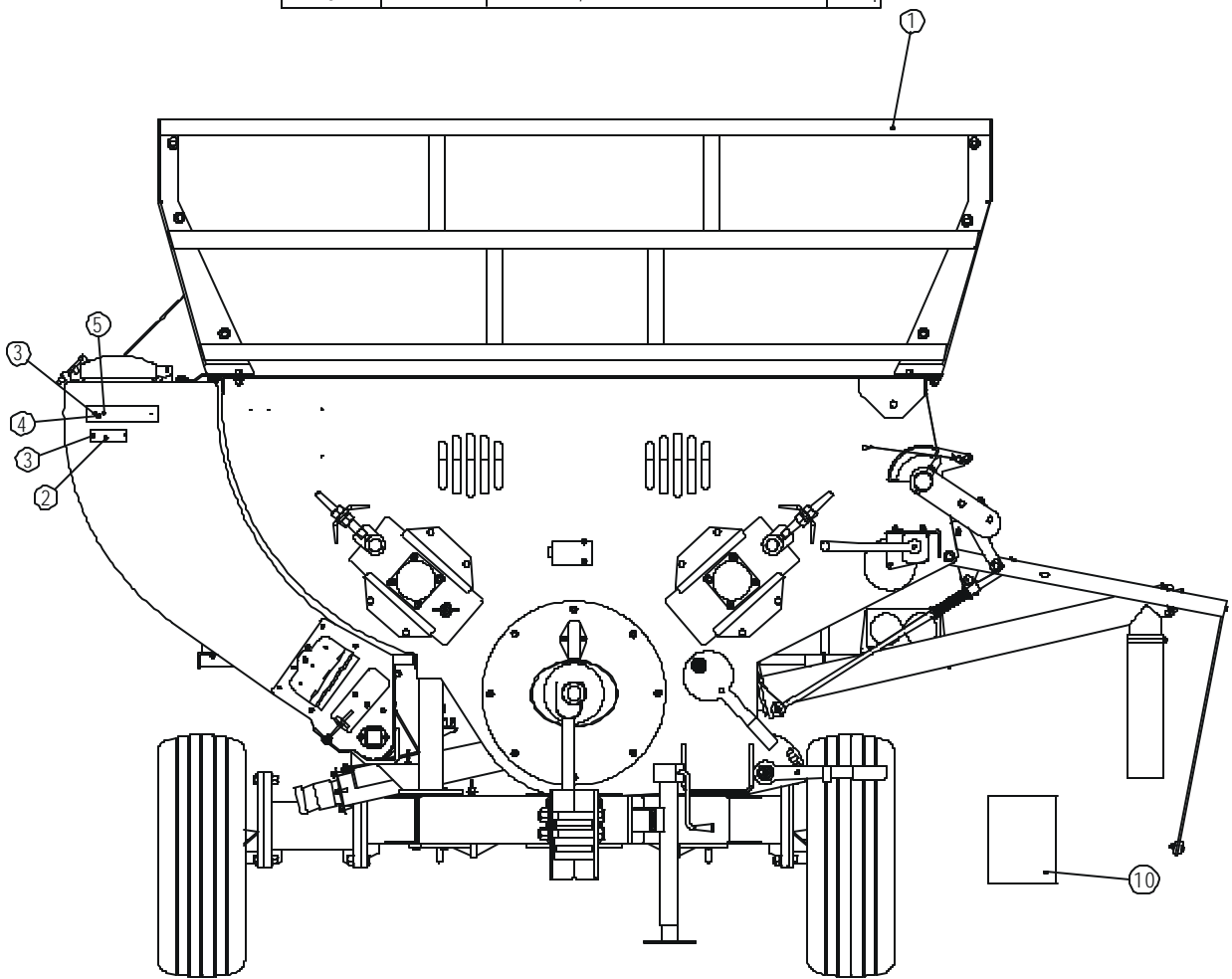
4.7 Auger Lift Linkage Assembly (Part No. 49149)

ITEM NO.	PART NO.	DESCRIPTION	QTY.
1	49243	STOP,LIFT,AUGER	1
2	49244	LINK,LIFT,AUGER	1
3	E5521	BUSHING,SPRING,LINKAGE,AUGER	1
4	30197	PIN,SPRING,3/16X1-1/2	1
5	91402	SPRING,PRESSURE,HARROW	1
6	31240	WASHER,FLAT,5/8,ZP	1

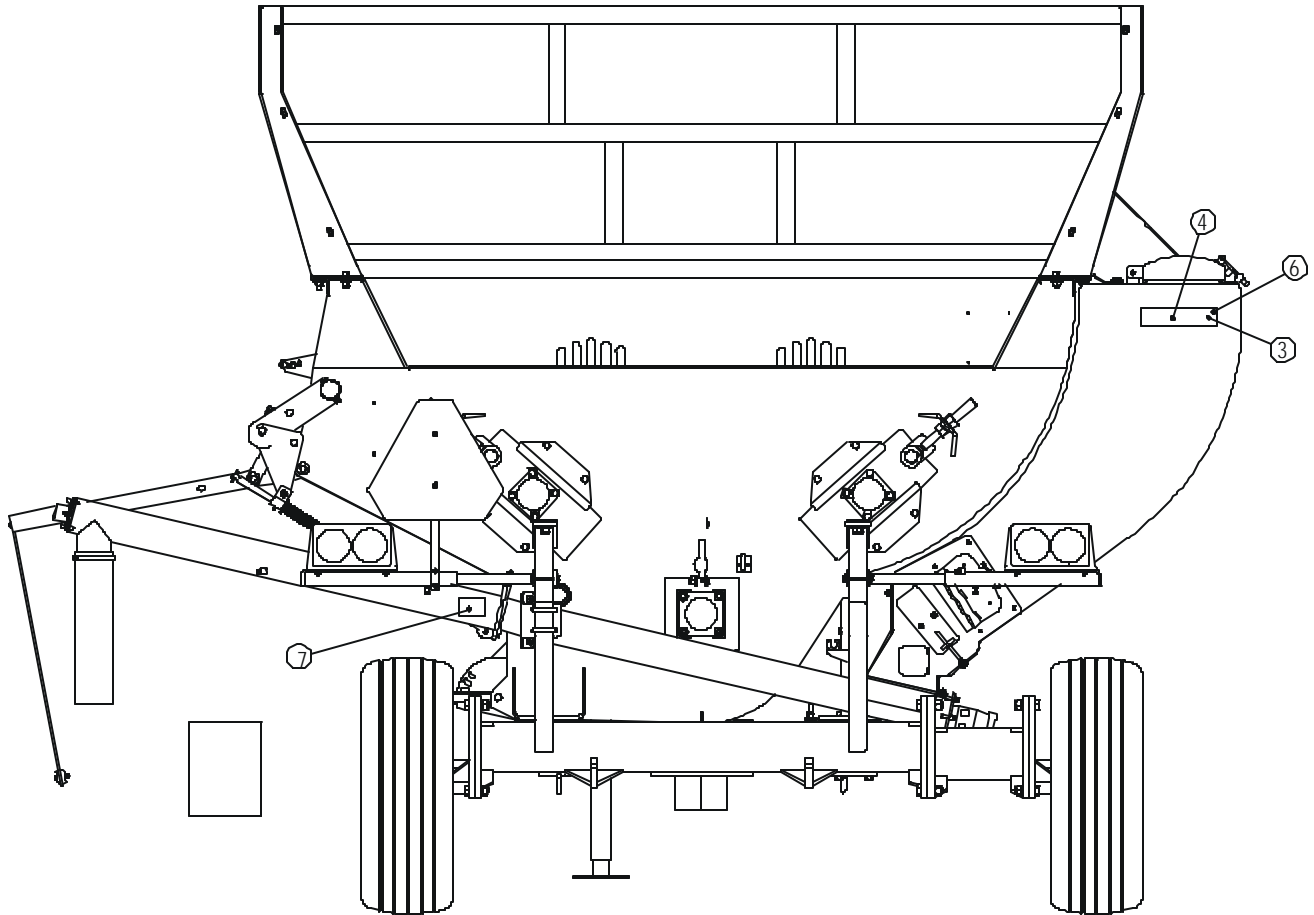


4.8 Decal Location

ITEM NO.	PART NO.	DESCRIPTION	QTY.
1	49201	EZFEED280 (W/O DECALS)	1
2	30208	PLT ,SERIAL#	1
3	30161	RIVET,ST,5/32x.665,.312 HEAD	6
4	E5667	PLATE,MOUNT,DECAL	2
5	30578	DECAL,AMBER REFL,2X9	1
6	30577	DECAL,RED REFL,2X9	1
7	E3946	DECAL,DANGER,PINCH POINT	1
8	E5666	MANUAL,EZFEED-B	1



NOTE: RIVET E5667 (PLATE,MOUNT,DECAL) TO FRONT AND REAR OF THE TANK, THEN APPLY AMBER AND RED DECALS



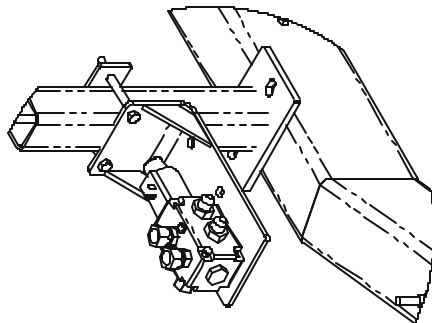
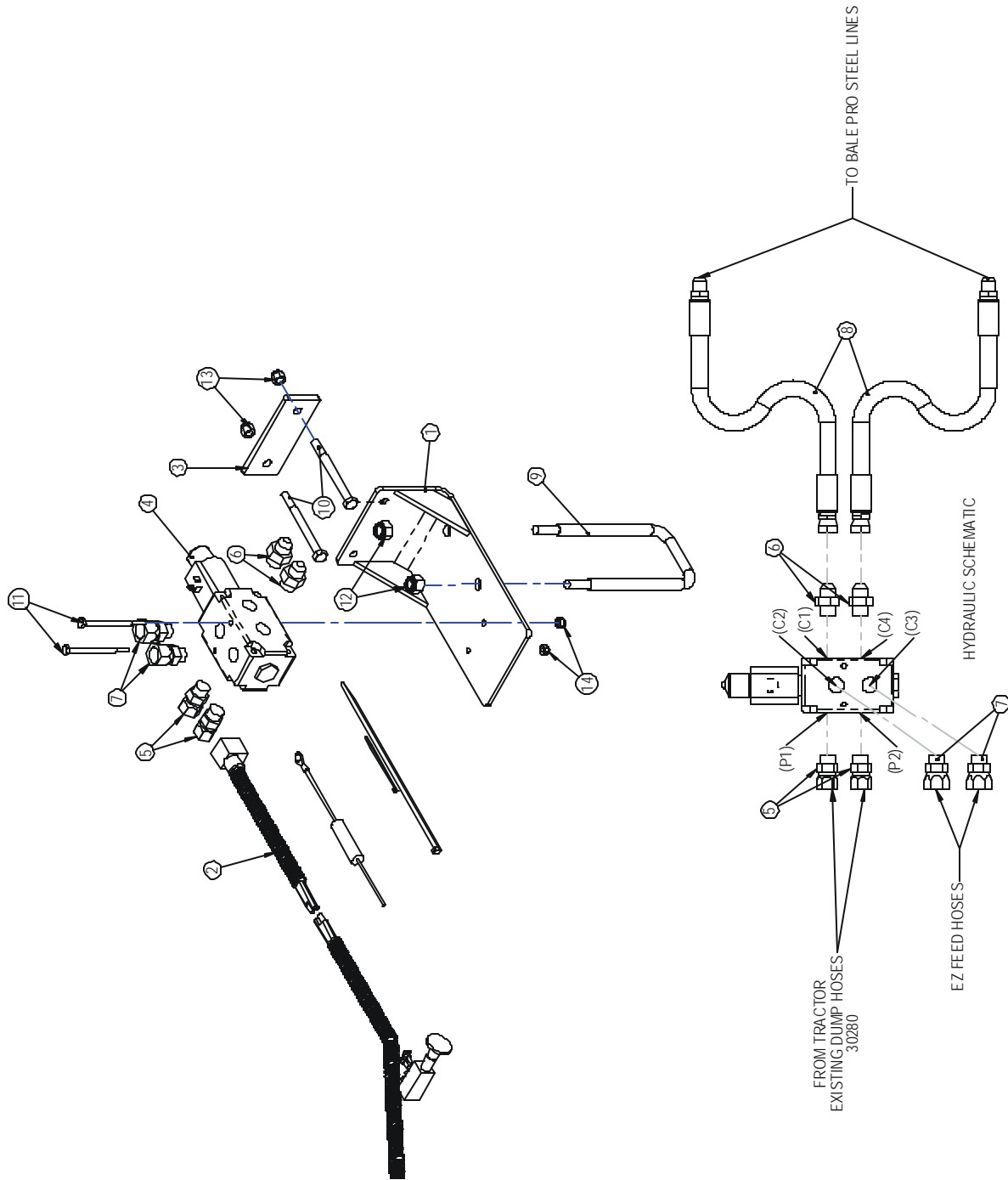
Note: Shift the position of mount plate (4) and decal (6) when attaching EZ Feed to Bale Pro 7000 HD. This will allow proper mounting clearance for the right rear light assembly.

This page left intentionally blank.

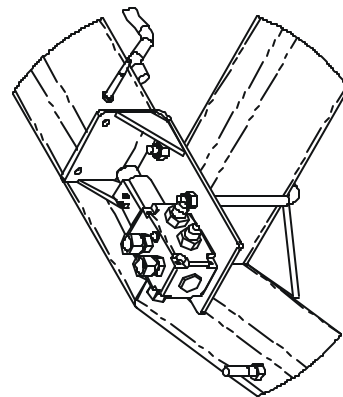
5.0 Options

5.1 Electric/Hydraulic EZFeed Option (Part No. EZOEH-3 (89012))

ITEM NO.	PART NO.	DESCRIPTION	QTY.
1	49419	WLDT,MOUNT,ELEC_HYD,7010	1
2	49421	ELEC,HARNESS,SELECTOR VALVE	1
3	E6878	PLT,S,1/4X2X5,13/32DIA	1
4	33201	HYD,VALVE,ELEC_DOUBLE_SELECTOR	1
5	30152	HYD,FIT,ADAPTER,8MB-8FJX	2
6	30215	HYD,FIT,ADAPTER,8MB-8MJ	2
7	32015	HYD,FIT,ADAPTER,8MB-8FPX	2
8	32050	HYD,HOSE,3/8X24,8FJX-8MJ,2W	2
9	31061	BOLT,U,SQ,1/2-13,3x7,1-1/4	1
10	33221	BOLT,HEX,3/8X4,UNC,GR5,ZP	2
11	33200	BOLT,HEX,1/4X3-1/2,UNC,GR5,ZP	2
12	31647	NUT,NYLOCK,1/2,UNC,GRC,ZP	2
13	31176	NUT,NYLOCK,3/8,UNC,ZP	2
14	31174	NUT,NYLOCK,1/4,UNC,ZP	2



DETAIL HD-03

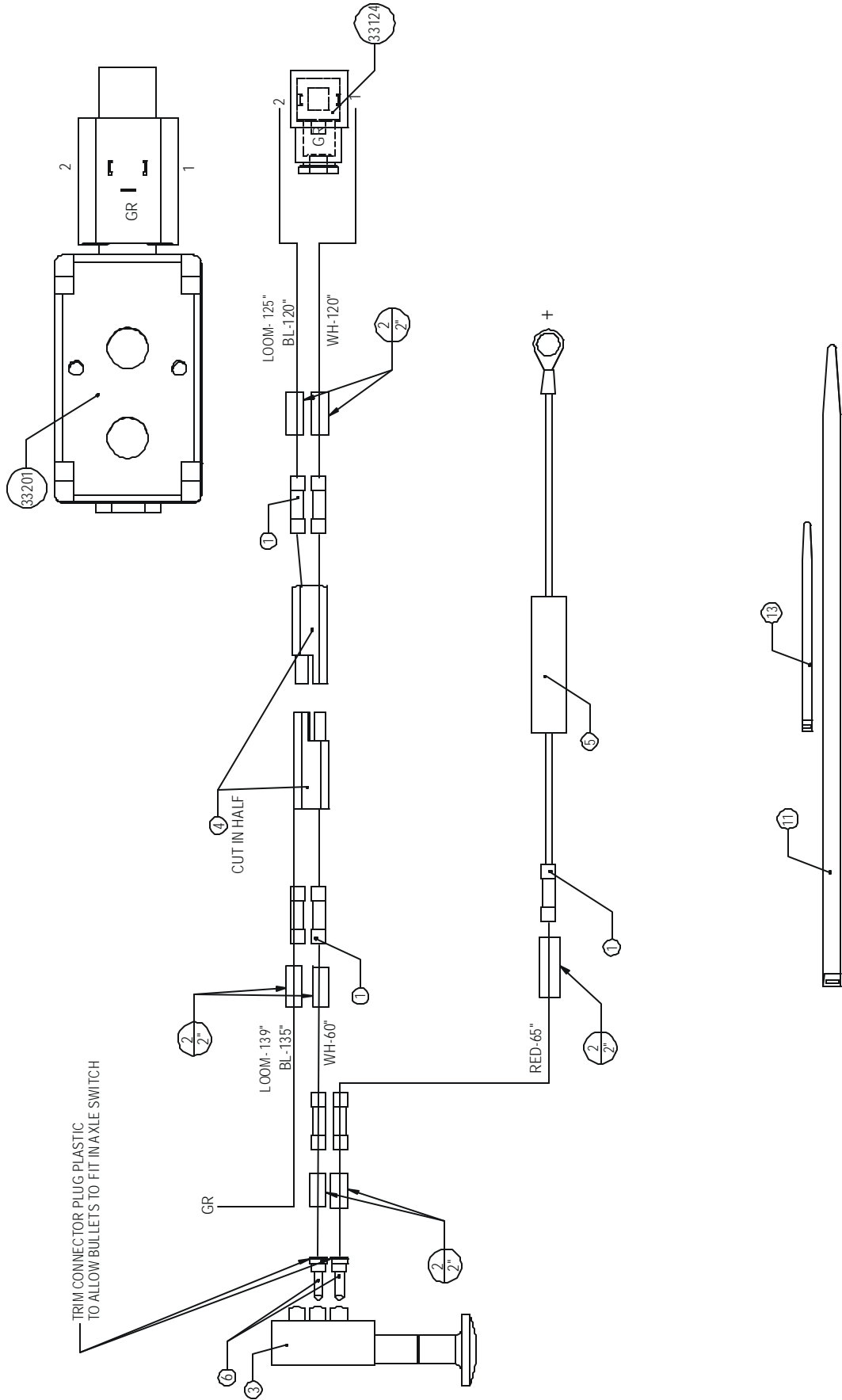


DETAIL HD-APLUS

5.1.1 Selector Valve Harness (Part No. 49421)

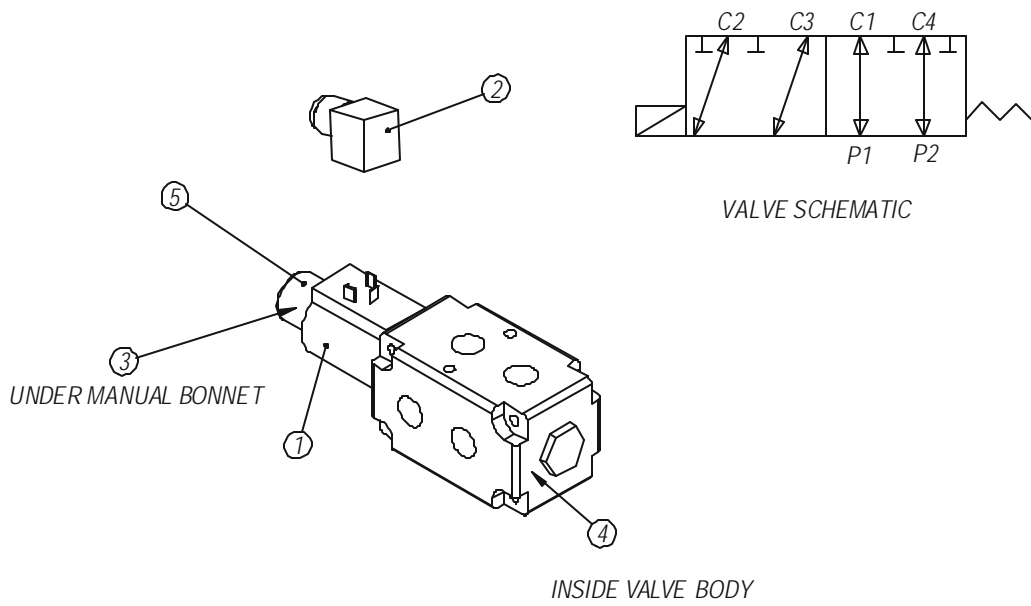
ITEM NO.	PART NO.	DESCRIPTION	QTY.
1	30408	ELEC,CONN,BUTT,16-14	7
2	31976(1.17)	ELEC,HEAT_SHRINK,DUAL_WALL,1/4	1
3	33123	ELEC,SWITCH,AXLE	1
4	33125	ELEC,CONN,2_POLE,FLAT,16GA	1
5	33127	ELEC,HOLDER,FUSE,15AMP	1
6	33130	ELEC,PLUG,BUL .156,90 DEG	2
7	37980(21.25)	ELEC,WIRE,14GA,STRAND,BLACK	1
8	37981(15)	ELEC,WIRE,14GA,STRAND,WHITE	1
9	92151(5.5)	ELEC,WIRE,16GA,STRAND,RED	1
10	92143(22)	ELEC,LOOM,1/2,SPLIT,CORRUGATED	1
11	31613	TIE,CABLE,NYLON,BLACK,11 1/2"	3
12	92166	ELEC_CONNECTOR,RING,3/8,16-14,ST,INS	1
13	92170	TIE,CABLE,4",BLACK	6

ALL NUMBERS IN () ARE IN UNIT OF MEASUREMENT FT.



5.1.2 Double Selector Hydraulic Valve (Part No. 33201)

ITEM NO.	PART NO.	DESCRIPTION	QTY.
1	33126	COIL,C4801-V12-DCGM5050/5051	1
2	33124	MPM 182-09 DIN CONNECTOR	1
3	33128	NUT GM 5043	1
4	33129	SPRING,RETURN	1
5	33138	BOOT, OVERRIDE	1



6.0 Part Index

Part No.	Description	Page	Item
30087	HYD,MOTOR,2.8,914RPM,1800PSI	30	6
30145	HYD,FIT,ELBOW,10MB-8MJ90	38	1
30152	HYD,FIT,ADAPTER,8MB-8FJX	44	5
30161	RIVET,ST,5/32X.665,.312HEAD	23	9
30161	RIVET,ST,5/32X.665,.312HEAD	41	3
30197	PIN,SPRING,3/16X1-1/2	40	4
30208	PLT,SERIAL#	23	6
30208	PLT,SERIAL#	41	2
30209	HYD,FIT,PIONEER,MALE,8FP	38	2
30210	HOSECLAMP,1/2	38	8
30215	HYD,FIT,ADAPTER,8MB-8MJ	44	6
30408	ELEC,CONN,BUTT,16-14	46	1
30560	HYD,VALVE,CHECK,08MP-08FP	38	7
30577	DECAL,RED REFL,2X9	23	7
30577	DECAL,RED REFL,2X9	41	6
30578	DECAL,AMBER REFL,2X9	23	8
30578	DECAL,AMBER REFL,2X9	41	5
31017	BOLT,HEX,1/2X1-3/4,UNC,GR5,ZP	24	20
31017	BOLT,HEX,1/2X1-3/4,UNC,GR5,ZP	34	20
31028	BOLT,HEX,1/2X5,UNC,GR5,ZP	30	11
31043	BOLT,HEX,3/8X1,UNC,GR5,ZP	30	17
31043	BOLT,HEX,3/8X1,UNC,GR5,ZP	34	34
31061	BOLT,U,SQ,1/2-13X3X7,1-1/4	44	9
31062	BOLT,HEX,5/16X1,UNC,GR5,ZP	28	6
31163	NUT,HEX,1/2,UNC,GR5,ZP	24	26
31164	NUT,HEX,1/4,UNC,GR5,ZP	28	7
31173	NUT,NYLOCK,1/2,UNC,ZP	24	24
31173	NUT,NYLOCK,1/2,UNC,ZP	30	10
31173	NUT,NYLOCK,1/2,UNC,ZP	34	19
31174	NUT,NYLOCK,1/4,UNC,ZP	28	8
31174	NUT,NYLOCK,1/4,UNC,ZP	34	30
31174	NUT,NYLOCK,1/4,UNC,ZP	44	14
31176	NUT,NYLOCK,3/8,UNC,ZP	30	15
31176	NUT,NYLOCK,3/8,UNC,ZP	34	23
31176	NUT,NYLOCK,3/8,UNC,ZP	44	13
31177	NUT,NYLOCK,5/16,UNC,ZP	28	9
31177	NUT,NYLOCK,5/16,UNC,ZP	30	14
31177	NUT,NYLOCK,5/16,UNC,ZP	34	25
31177	NUT,NYLOCK,5/16,UNC,ZP	38	9
31178	NUT,NYLOCK,5/8,UNC,ZP	24	25
31236	WASHER,FLAT,1/2,ZP	24	28
31236	WASHER,FLAT,1/2,ZP	34	21
31237	WASHER,FLAT,1/4,ZP	28	10
31239	WASHER,FLAT,5/16,ZP	28	11
31239	WASHER,FLAT,5/16,ZP	30	21
31239	WASHER,FLAT,5/16,ZP	34	38
31239	WASHER,FLAT,5/16,ZP	38	10
31240	WASHER,FLAT,5/8,ZP	24	30
31240	WASHER,FLAT,5/8,ZP	40	6

31244	WASHER,LOCK,1/2,ZP	24	29
31245	WASHER,LOCK,1/4,ZP	28	12
31246	WASHER,LOCK,3/4,ZP	24	31
31289	PIN,COTTER,3/16X1-1/2	24	15
31315	BOLT,HEX,3/4X2-1/2,GR8,ZP	24	23
31319	WASHER,LOCK,3/8,ZP	30	18
31319	WASHER,LOCK,3/8,ZP	34	33
31332	BOLT,HEX,1/2X1-1/4,UNC,GR5,ZP	34	22
31336	BOLT,HEX,5/8X3,UNC,GR5,ZP	24	22
31346	WASHER,LOCK,5/16,ZP	34	39
31347	NUT,HEX,5/16,UNC,ZP	30	13
31347	NUT,HEX,5/16,UNC,ZP	34	26
31351	WASHER,FLAT,3/8,ZP	30	20
31351	WASHER,FLAT,3/8,ZP	34	16
31450	PIN,COTTER,1/8X1	24	16
31478	BOLT,HEX,1/2X7-1/2,GR5,UNC,ZP	24	21
31533	BOLT,HEX,5/16X3/4,UNC,GR5,ZP	30	16
31536	WASHER,FLAT,1/8,ZP	28	13
31611	BOLT,U,RD,1/2-13X4-/2X6,2-1/2	24	18
31613	TIE,CABLE,NYLOCK,BLACK,11-1/2	46	11
31641	CLAMP,HOSE	24	17
31647	NUT,NYLOCK,1/2,UNC,GRC,ZP	44	12
31650	ELEC,CLAMP,CABLE,3/4	28	5
31675	BOLT,U,SQ,1/2-13X2X7,1-3/8	24	19
31676	HYD,HOSE,3/8X200,8MP-8FJX	38	3
31739	RIVET,ST,3/16X.565,.375HEAD	28	14
31765	DRV,BRG,FLANGE ASSY,7/8	30	7
31765	DRV,BRG,FLANGE ASSY,7/8	34	15
31768	NUT,HEX,JAM,3/8,UNC,GR5,ZP	34	17
31769	BOLT,HEX,3/8X5,UNC,GR5,ZP,FT	34	18
31773	LATCH,RUBBER,3"	34	31
31775	BOLT,CARR,5/16X1-1/4,UNC,GR5,ZP	30	12
31775	BOLT,CARR,5/16X1-1/4,UNC,GR5,ZP	34	24
31776	HYD,HOSE,3/8X18,8FJX-10MB	38	4
31777	NUT,HEX,3/4,UNC,GR8,ZP	24	27
31778	BOLT,HEX,1/4X6,UNC,GR5,ZP	34	29
31779	SCREW,TAPPING,#14X1	28	15
31779	SCREW,TAPPING,#14X1	34	27
31780	SCREW,TAPPING,#8X5/8	34	28
31782	SEALANT,SILICONE,300ML TUBE	34	36
31830	BOLT,HEX,3/8X2-1/4,UNC,GR5,ZP	30	19
31830	BOLT,HEX,3/8X2-1/4,UNC,GR5,ZP	34	35
31833	HYD,THRUST BEARING	32	1
31833	HYD,THRUST BEARING	37	1
31834	HYD,DRIVE LINK	37	2
31835	HYD,WEAR PLATE	32	3
31835	HYD,WEAR PLATE	37	3
31836	HYD,ROTOR ASSEMBLY	37	4
31837	HYD,DRIVE LINK PIN	37	5
31838	HYD,ENDCOVER KIT	32	6
31838	HYD,ENDCOVER KIT	37	6
31839	HYD,BOLT,ENDCOVER	37	7
31840	HYD,HOUSING	32	8

31840	HYD,HOUSING	37	8
31841	HYD,COOLING PLUG	32	9
31841	HYD,COOLING PLUG	37	9
31842	HYD,SHAFT	32	10
31842	HYD,SHAFT	37	10
31843	HYD,DRIVE LINK	32	2
31844	HYD,ROTOR ASSEMBLY	32	4
31845	HYD,DRIVE LINK PIN	32	5
31846	HYD,BOLT,ENDCOVER	32	7
31976	ELEC,HEAT_SHRINK,DUAL_WALL,1/4	46	2
31986	HYD,MOTOR,SEAL,WHITE	32	12
31986	HYD,MOTOR,SEAL,WHITE	37	12
32015	HYD,FIT,ADAPTER,8MB-8FPX	44	7
32050	HYD,HOSE,3/8X24,8FJX-8MJ,2W	44	8
32082	HYD,FIT,ADAPTOR,8MP-8MP	38	5
32166	ELEC_CONNECTOR, RING 3/8,16-14,ST,INS	46	12
32735	SEAL KIT	32	11
32735	SEAL KIT	37	11
32975	HYD,VALVE,CONTROL,FLOW,8FP	38	6
33123	ELEC,SWITCH,AXLE	46	3
33124	MPM 182-09 DIN CONNECTOR	48	2
33125	ELEC,CONN,2_POLE,FLAT,16GA	46	4
33126	COIL,C4801-V12-DCGM5050/5051	48	1
33127	ELEC HOLDER,FUSE,15AMP	46	5
33128	NUT GM5043	48	3
33129	SPRINT,RETURN	48	4
33130	ELEC,PLUG,BUL.156,90 DEG	46	6
33138	BOOT,OVERIDE	48	5
33200	BOLT,HEX,1/4X3-1/2,UNC,GR5,ZP	44	11
33201	HYD,VALVE,ELEC_DOUBLE_SELECTOR	44	4
33221	BOLT,HEX,3/8X4,UNC,GR5,ZP	44	10
37980	ELEC,WIRE,14GA,STRAND,BLACK	46	7
37981	ELEC,WIRE,14GA,STRAND,WHITE	46	8
37989	HYD,MOTOR,10IN3	34	32
37998	BOLT,CARR,1/4X3/4,UNC,GR5,ZP	28	16
49065	EXTENSION,AXLE,SHORT,BP	24	1
49130	BRACKET,TANK,SUPPORT	34	7
49133	CONTROL,FEED,AUGER	34	8
49134	PLATE, TOP	34	9
49135	BOOT,AUGER,DISCHARGE	34	10
49138	AUGER,BREAK-AWAY,DISCHARGE	24	2
49143	CONTROL,FEED,TANK	34	11
49144	GUARD,BEARING,7/8	30	5
49144	GUARD,BEARING,7/8	34	12
49145	PANEL,FRONT,TANK	34	13
49146	AUGER,DRAG	34	14
49147	TANK,GRAIN,ASSEMBLY	24	3
49148	BYD,EZFEED,BP7000	24	4
49149	LINKAGE,LIFT,AUGER	24	5
49198	HOUSING,AUGER,DISCHARGE,BOTTOM	30	1
49199	HOUSING,AUGER,DISCHARGE, TOP	30	2
49201	EZFEED280 (W/O DECALS)	41	1
49202	AUGER,DISCHARGE,BOTTOM	30	3

*Highline Mfg.Inc.**EZ FEED-3 (2003)*

49203	AUGER,DISCHARGE,TOP	30	4
49243	STOP,LIFT,AUGER	40	1
49244	LINK,LIFT,AUGER	40	2
49385	WLDT,PIVOT PLATE,AUGER	24	6
49386	WLDT,PIVOT BAR,AUGER	24	7
49391	WLDT,SMV SIGN MOUNT	28	1
49419	WLDT,MOUTN,ELEC_HYD,7010	44	1
49421	ELEC,HARNESS,SELECTOR VALVE	44	2
49509	ASSY,EZFEED,COMMON	23	1
49510	ASSY,SMV_LGTBKT,HIGHLINE	23	2
49620	WLDT,MOUNT,TANK,6X4	24	8
91402	SPRING,PRESSURE,HARROW	40	5
92143	ELEC,OOM,1/2,SPLIT,CORRUGATED	46	10
92151	ELEC,WIRE,16GA,STRAND,RED	46	9
92170	TIE,CABLE,4",BLACK	46	13
E3946	DECAL,DANGER,PINCH POINT	23	3
E3946	DECAL,DANGER,PINCH POINT	41	7
E4414	PLT,MOUNT,TANK	24	9
E4423	PLT,MOUNT,MOTOR,DISCHARGE	30	8
E4429	SPOUT,DISCHARGE,AUGER	24	10
E4430	LID,TANK,GRAIN	34	2
E4485	TANK,GRAIN,WITH HOLES	34	1
E5060	PLATE,MOUNT,TANK,BASE	34	3
E5064	BRACKET,SUPPORT,TANK	34	4
E5095	PLATE,MOUNT,BEARING,AUGER	30	9
E5500	PLT,MOUNT,AUGER,DISCHARGE	24	11
E5509	PLATE,SUPPORT,TANK	34	5
E5510	TAB,MOUNT,TANK	34	6
E5521	BUSHING,SPRING,LINKAGE,AUGER	40	3
E5666	MANUAL,EZFEED-3	41	8
E5667	PLATE,MOUNT,DECAL	23	4
E5667	PLATE,MOUNT,DECAL	41	4
E6123	COVER,ACCESS,AUGER	34	37
E6302	PIPE,SMLS,1X.188X1-9/16L	24	12
E6308	PIPE,SMLS,13/4X.120X11/16L	24	13
E6309	PLT,LIGHT,EXTENSION	28	2
E6310	RUBBER PAD,AUGER,1/8"	28	3
E6318	PLT,LIGHT,RHS	28	4
E6708	PIPE,SMLS,1X.188X7/16L	24	14
E6878	PLT,S,1/4X2X5,13/32 DIA	44	3
E6978	MANUAL,EZFEED-3	23	5

7.0 Specifications

Weight:	540 lbs.
Total length mounted on Bale Pro 7000:	186-1/2"
Transport width mounted on Bale Pro 7000:	117"
Operating width mounted on Bale Pro 7000:	145-1/2"
Maximum height mounted on Bale Pro 7000:	105-1/2"
Hydraulic outlets required:	1
Minimum hydraulic pressure required:	1500 psi
Maximum hydraulic flow required:	6 GPM
Maximum discharge rate:	6 bushels/minute

Available Options:

Hydraulic Solenoid Selector Valve Kit

Dealer Information

Dealer: _____

Address: _____

City: _____

Province / State: _____

Postal Code / Zip Code: _____

Phone: _____



Identification Numbers

Model Number: _____

Serial Number: _____

Dealer Checklist

EZ Feed Dealer Checklist

Checked	Check List Item
	Auger hydraulic motors to be operated and checked for leaks, proper direction and free movement.
	Check both augers for excessive noise or interference.
	Check free movement of auger lift linkage by lowering and raising BP deflector through full range.
	Adjust auger slide control in fully down position.
	Ensure grease point on auger lift linkage and auger pivot plate is lubricated.
	Verify serial number plate attached.
	Check the front and rear of tank for proper sealant application between plates and tank.
	Ensure right rear light is moved into its proper position. Shift right rear decal, and decal hardware down to accommodate light assembly position.
	Check operation of rear lights to ensure the harness is connected properly.