

*EZ Feed II
on the
7000 Bale Pro*

**Operator's
Manual**



EZ Feed II
on the
7000 Bale Pro

**Operator's
Manual**

Highline Manufacturing Limited
HWY #27, P.O. Box 307
Vonda, SK S0K 4N0
Canada
Phone: 306.258.2233
Fax: 306.258.2010
Toll Free: 1.800.665.2010

E10698V1

Highline Team Message

Congratulations on your purchase of the EZ Feed II for the 7000 Bale Pro manufactured by Highline Manufacturing Ltd.

This operator's manual has been prepared to provide information necessary for the safe and efficient operation of your EZ Feed II. In the manual you will find safety procedures, maintenance routines and detailed operational instructions.

If you find that you require information not covered in this manual, please feel free to consult your local dealer. Your dealer is always able to contact Highline for this technical information.

Highline Manufacturing Ltd. thanks and congratulates you for selecting a EZ Feed II for the 7000 Bale Pro as your machine of choice.

Sincerely,

*George MacKay
General Manager
Highline Manufacturing Ltd.*

Table of Contents

General Description of the EZ Feed II
Intended Use of the EZ Feed II

Section 1 Safety

Safety Sign-off Form
Safety Alert Symbol
General Safety
Safety Decals
Safety Decal Locations

Section 2 Operating the EZ Feed II on the 7000 Bale Pro

Filling the Tank
Determining Approximate Discharge Rate
Operating the EZ Feed II
Removing Commodity from the Tank

Section 3 Maintaining the EZ Feed II on the 7000 Bale Pro

Clear the Auger Discharge in the Tub
Clearing Blocked Auger Flighting
Removing Commodity from the Tank

Section 4 Specifications

Assembly of EZ Feed II on the Bale Pro 7000

Parts Information

Warranty and Warranty Registration

This Page Left Blank

GENERAL DESCRIPTION OF THE EZ FEED II

The EZ Feed II is an attachment to the Bale Processor. When the EZ Feed II is turned on it uses hydraulic power from the tractor to turn an auger under a grain feed tank. The auger discharges feed into the tub of the Bale Processor.

When the addition of feed mixed into the processed material is desired, the EZ Feed II motor is engaged and the auger places feed into Bale Processor. The rate of feed mix is controlled by adjusting the speed of the auger hydraulic motor through the hydraulic flow control valve.

When the EZ Feed II is not turned on, the Bale Processor discharges material without any feed intermixed.

The operator of the Bale Processor/EZ Feed II is located in the tractor cab where they drive the tractor, control the speed of driving and turning on of the EZ Feed II auger.

INTENDED USE OF THE EZ FEED II

The EZ Feed II is designed to add animal feed materials into materials that have been initially processed by the Bale Processor.

The EZ Feed II is intended for use in conjunction with the Bale Processor.

The EZ Feed II is intended for use in farming applications.

The EZ Feed II is intended for the mixing of animal feed in farming applications.

The EZ Feed II is intended for off road use only.

Any uses of the EZ Feed II other than the above stated Intended Uses shall be considered misuse of the EZ Feed II . This misuse shall included (but not limited to):

- Using the EZ Feed II in non-farming applications
- Using the EZ Feed II on public roads
- Metering of feeds or grains for seeding purposes
- Metering materials other than animal feed materials
- Augering of materials when the tank is not connected to the Bale Processor

Always use the EZ Feed II according to the instructions contained in this Operator's Manual and the safety and instruction decals on the machine.

Perform regular maintenance and repair to ensure that the EZ Feed II operates safely and efficiently.

This Page Left Blank

SERIAL NUMBER

Your serial number is found on the serial number plate attached to the EZ Feed II Tank on the rear of the tank above the rear axle of the Bale Processor.

It is important to record the serial number for proof of ownership and for any service or maintenance assistance.

Serial Number _____

Owner _____

Model _____

Date of Purchase _____

SAFETY ALERT SYMBOL

The Safety Alert Symbol means:



**ATTENTION!
BECOME ALERT!
YOUR SAFETY IS INVOLVED!**

The Safety Alert Symbol combined with a Signal Word alert to the presence of a hazard and the degree of possible injury.



Indicates an imminently hazardous situation that, if not avoided, **WILL** result in **DEATH OR SERIOUS INJURY**. The color is Red with White lettering.



Indicates a potentially hazardous situation that, if not avoided, **COULD** result in **DEATH OR SERIOUS INJURY**, and includes hazards that are exposed when guards are removed or unsafe practices. The color is Orange with Black lettering.



Indicates a potentially hazardous situation that, if not avoided, **MAY** result in **MINOR INJURY**. The color is Yellow with Black lettering.

GENERAL SAFETY

1. Ensure that anyone who is going to operate, maintain or work near the EZ Feed II is familiar with the recommended operating, maintenance procedures and safety information contained in this manual and follows all the safety precautions.
2. In addition to the design and configuration of the equipment, hazard control and accident prevention are dependant upon the awareness, concern, prudence and proper training of personnel involved in the operation, transport, maintenance and storage of this equipment.
3. The EZ Feed II shall not be operated without all the guards in place.

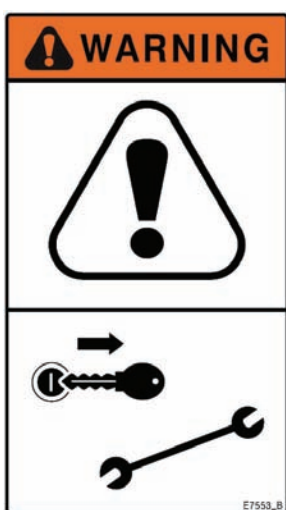
SAFETY DECALS

1. Keep the decals and signs clean and legible at all times.
2. Replace decals and signs that are damaged, missing or have become illegible.
3. Parts that have been replaced should display a current decal.
4. Decals are available from the Highline Parts Department.
5. Be familiar with the decals, the type of warning and the area or function(s) related to the area(s) that requires your awareness.



DO NOT CONTACT THE ROTATING AUGER

Keep fingers and hand out of the auger tube and chamber. Never attempt to manually remove debris while the auger is rotating. Contact with the rotating auger will cause serious injury or death. Keep all auger guards in place.



SHUTDOWN THE TRACTOR BEFORE DISMOUNTING TRACTOR

Shut down the tractor and remove the key before repairing, servicing or adjusting, lubricating or cleaning the EZ Feed II. Set the park brake. Disengage power take off. Before servicing or adjusting, wait for all parts to stop rotating. Keep guards in place and in good condition.

Never transport unit on highway with product in tank.



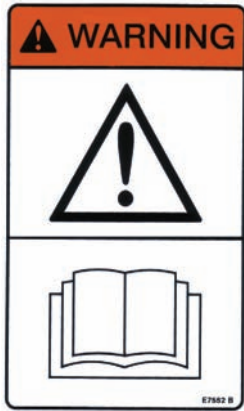
DO NOT OPERATE WITH SHIELDS MISSING

Contact with the moving parts may cause serious injury or death. Keep shields fastened in place. Keep away from moving parts. Do not stand or climb on the machine when operating.



USE PAPER OR CARDBOARD TO CHECK FOR HYDRAULIC LEAKS

To prevent serious injury or death: Relieve pressure on hydraulic system before repairing, adjusting or disconnecting. Wear proper hand and eye protection when searching for leaks. Use wood or cardboard instead of hands. Keep all components in good repair.



READ, UNDERSTAND, AND FOLLOW SAFETY INSTRUCTIONS

Read, understand and follow all instructions and safety messages included in this manual and on decals attached to the machine. These instructions and safety messages contain important information.

Allow only responsible, properly instructed individuals to operate and service the machine.

Failure to follow the instructions and safety messages in this manual and on the decals attached to the machine could result in serious injury or death.

Keep all safety and instruction decals in good condition. Replace any missing or damaged decals.



DO NOT ENTER THE TANK

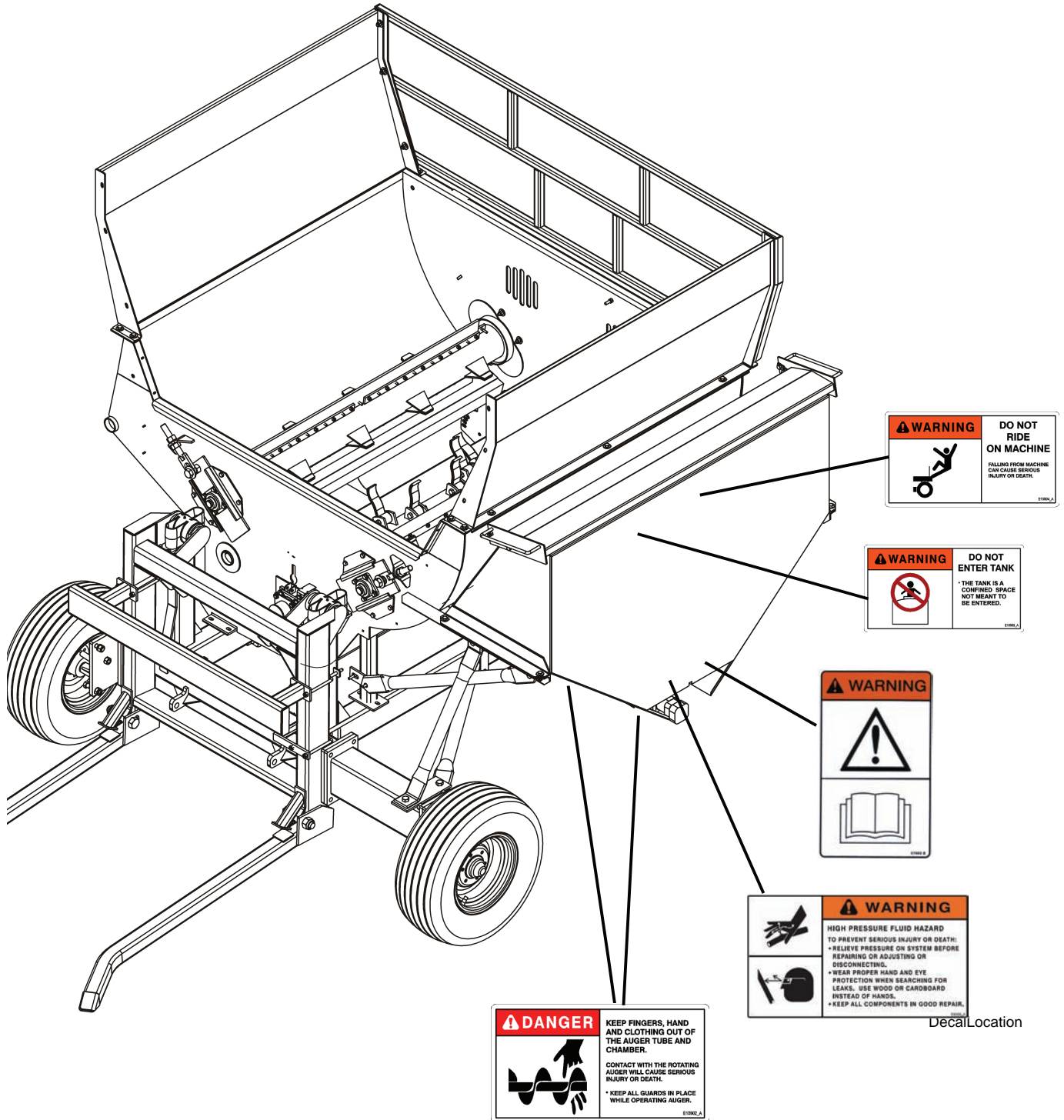
The tank is a confined space not meant to be entered.



DO NOT RIDE ON THE MACHINE

Riders may fall from the machine causing serious injury or death.

SAFETY DECAL LOCATIONS



Decal Location

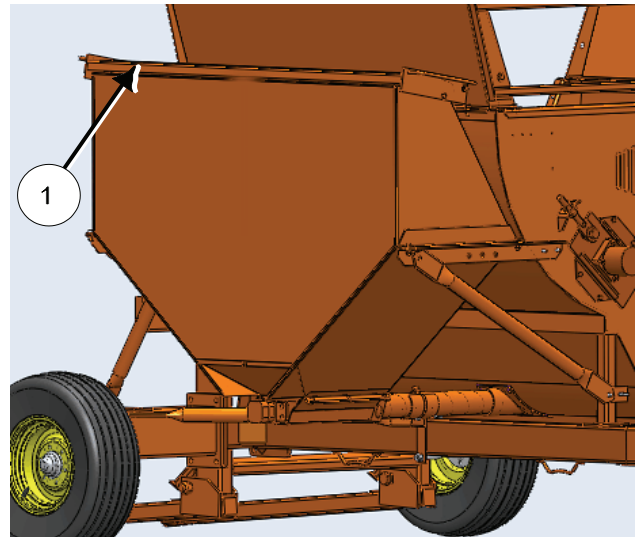
This Page Left Blank

2.0 OPERATING THE EZ FEED II

Operating the EZ Feed II

Filling the Tank

1. Lift the lid (1) of the tank.
2. Fill the tank with the desired commodity.
3. Close the lid (1).



Fill Tank Through Tank Lid

LidC

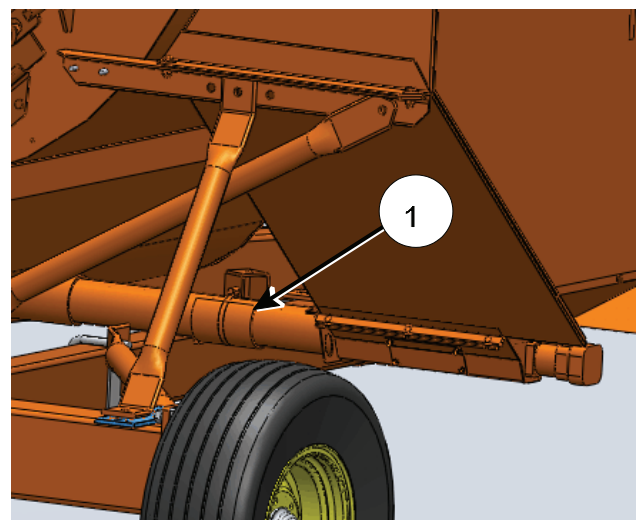
Determining Approximate Discharge Rate

Note: When determining the approximate discharge rate of the auger, the tractor's hydraulic oil should be warm and at a normal operating temperature.

1. Activate the tractor hydraulics to rotate the tank auger.

Note: If the auger does not rotate, reverse the flow of hydraulic fluid. A check valve is incorporated into the hydraulic circuit to prevent the auger from turning backwards.

2. Ensure the auger tube is full.
3. Loosen the clamp holding the auger tube cleanout cover (1).
 - a. Slide the tube cleanout cover to allow the commodity to be caught in a pail.

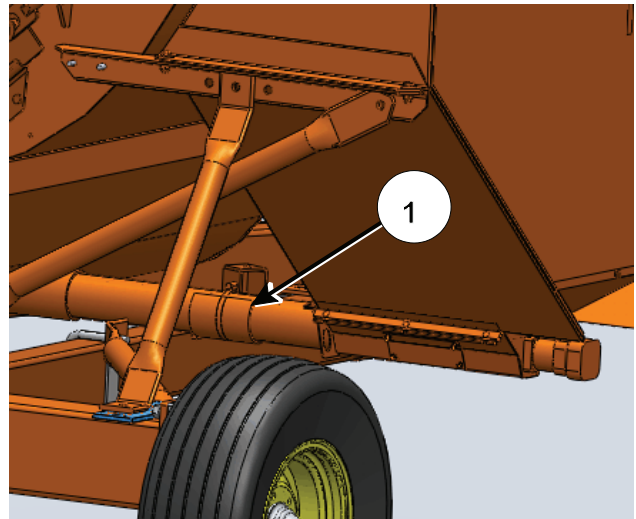


Auger Tube Cleanout Cover

AugCleanout

Section 2 - Operating the EZ Feed II on the 7000 Bale Pro

4. Record the weight of an empty container to catch the commodity.
5. Adjust the flow control valve to a moderate setting.
 - a. The flow control valve is on the hydraulic hoses of the auger motor.
6. Run the auger for 1 minute while collecting the commodity.
7. Weigh the container with the commodity.
 - a. Subtract the weight of the container.
8. This weight per minute gives a reference point for the discharge rate of the commodity that you are using.
9. Adjust the flow control to the auger to increase or decrease the amount discharged.
10. Additional weight samples can be taken for further adjustments.
11. Return the auger tube cover (1) and fasten in place with the clamp.



Auger Tube Cleanout Cover

AugCleanout

Operating the EZ Feed II

1. While processing a bale with the Bale Pro 7000, turn on the auger control to begin discharging commodity into the bale processor tub.
 - a. The commodity in the tank will be mixed with the material from the processor.

Removing Commodity from the Tank

Commodity remaining in the tank can be removed through the auger tube cleanout and through the plate on the auger chamber.



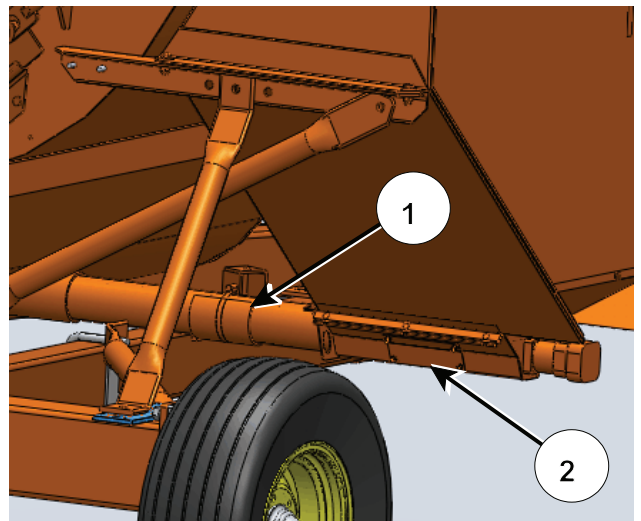
Do not enter the tank. The tank is a confined space not meant to be entered.

1. Loosen the clamp holding the auger tube cleanout cover (1).
 - a. Slide the tube cleanout cover to allow the commodity to be caught in a pail.
2. Remove the fasteners and plate (2) from the auger chamber.
3. Rotate the auger to move commodity out of the auger flighting.
4. A compressed air supply can be used to blow out the commodity from the cavities.



Use appropriate personal safety equipment if using compressed air.

5. Return the auger tube cover (1) and fasten in place with the clamp.
6. Return the plate (2) onto the auger chamber and fasten in place.



Auger Tube and Chamber Cleanout

AugCleanout2

This Page Left Blank

3.0 MAINTAINING THE EZ FEED II



Shut down the tractor and remove the key before repairing, servicing, adjusting, lubricating or cleaning the EZ Feed II.

Disengage the PTO and driveline.

Wait for all parts to stop rotating.

Do not enter the tank or allow persons to enter the tank.

Relieve pressure on hydraulic system before repairing or disconnecting.

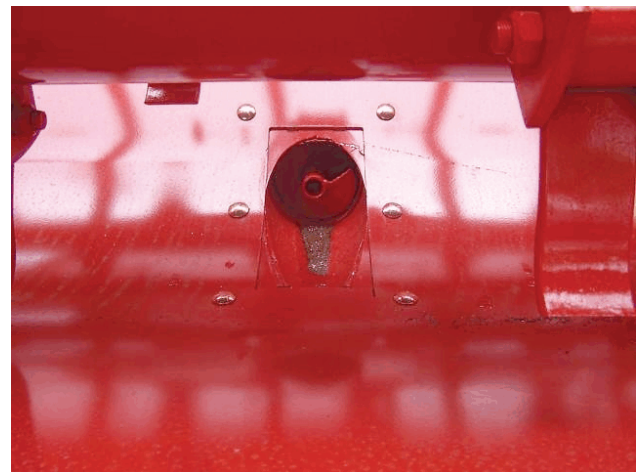
Wear proper hand and eye protection when searching for leaks. Use wood or cardboard instead of hands.

Do not contact the rotating auger. Keep fingers and hand out of the auger tube and chamber.



Clear The Auger Discharge In The Tub

1. From inside the Bale Pro tub, clear the auger discharge from any commodity buildup or blocking materials.
2. Remove any buildup to allow a free flow of commodity.



Clear Auger Discharge Inside Tub

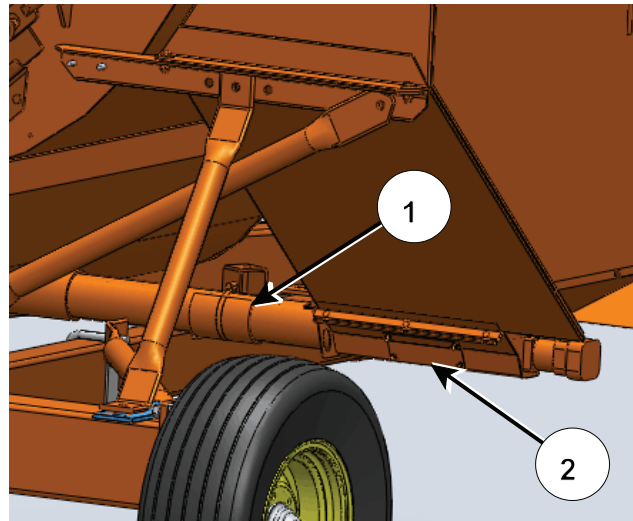
AugerDischarge

Clearing Blocked Auger Flighting



Keep fingers and hand out of the auger tube and chamber. Never attempt to manually remove debris while the auger is rotating. Contact with the rotating auger will cause serious injury or death.

1. Loosen the clamp on the auger tube cleanout cover (1).
 - a. Slide the tube cleanout cover to allow the commodity to be caught in a pail.
2. Remove the fasteners and plate (2) from the auger chamber.
3. Rotate the auger to move commodity out of the auger flighting.
4. Use compressed air to blow out auger.
5. Return the auger tube cover (1) and fasten in place with the clamp.
6. Return the plate (2) onto the auger chamber and fasten in place.



Auger Tube and Chamber Cleanout

AugCleanout2

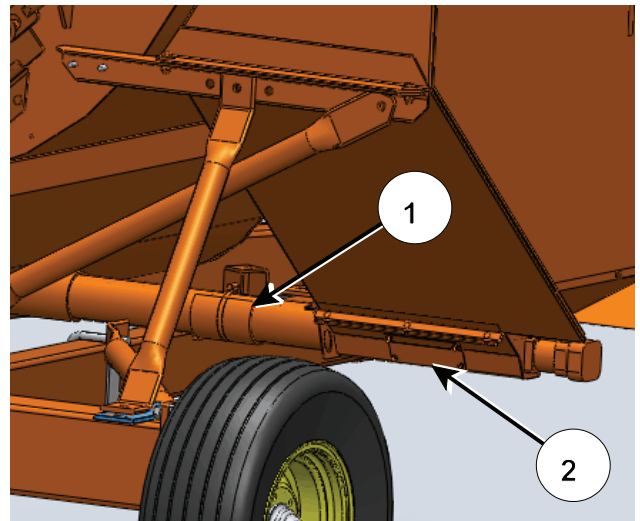
Removing Commodity from the Tank

Commodity in the tank can be removed through the auger tube cleanout and the plate on the auger chamber.



Do not enter the tank. The tank is a confined space not meant to be entered.

1. Loosen the clamp holding the auger tube cleanout cover (1).
 - a. Slide the tube cleanout cover to allow the commodity to be caught in a pail.
2. Remove the fasteners and plate (2) from the auger chamber.



Auger Tube and Chamber Cleanout

AugCleanout2



Keep fingers and hand out of the auger tube and chamber. Never attempt to manually remove debris while the auger is rotating. Contact with the rotating auger will cause serious injury or death.

3. Rotate the auger to move commodity out of the auger flighting.
4. Use compressed air to blow out any commodity from the cavities.



Use appropriate personal safety equipment if using compressed air.

5. Return the auger tube cover (1) and fasten in place with the clamp.
6. Return and fasten the plate (2) onto the auger chamber.



This Page Left Blank

Section 4 - Specifications

4.0 Specifications

	EZ Feed II
Weight:	Empty Tank - 480 lbs (218 kg)
Total Width Mounted on Bale Pro:	117" (2.97 m)
Maximum Capacity:	28 bushels (987 liters)
Hydraulic Flow Required:	Maximum 6 gpm flow required
Hydraulic Outlets for EZ Feed II:	1 (Can be combined with the bale lift using the Electro-Hydraulic Valve Option)
Hydraulic Minimum Pressure:	1500 psi (10342 kPa)

Section 4 - Specifications

This Page Left Blank

ASSEMBLY OF THE EZ FEED II ON THE 7000 BALE PRO

Note: The EZ Feed II for the 7000 Bale Pro is for left hand discharge machines only.



Park the Bale Pro on level ground.

Lower the forks to the ground for additional stability.

Disconnect the drive shaft and hydraulic lines from the tractor before beginning any work. Disconnect the Bale Pro from the tractor hitch.

Lift up and block up the machine. The tires and axle housings will need to be removed while doing this work.

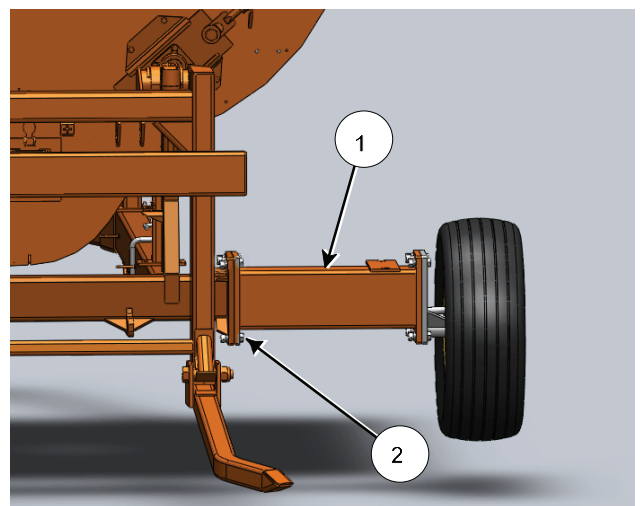
Install The Axle Extension & Spindles

If the Bale Pro has 16.5 x 16.1 tires, see the steps on page A-2.

If the Bale Pro has 11L15 tires, new axle/spindle assemblies must be installed.

1. Remove the left axle/spindle assembly.
 - a. Discard the 11L15 axle/spindle and the wheel fasteners.
 - b. The bolts and nuts will be used again.
 - c. Install the new axle/spindle assembly.
 - i. Use the fasteners from the removed axle.
 - d. Mount the tire using the new spindle wheel bolts.

2. Remove the right axle/spindle assembly.
 - a. Discard the 11L15 axle/spindle.
 - b. Install the axle extension tube (1) to the right frame axle mount.
 - i. Use the fasteners from the removed axle.
 - c. Install the new axle/spindle assembly to the extension tube.
 - i. Use 3/4" x 2 1/2" bolts, lockwashers and nuts (2).
 - d. Mount the tire with the wheel bolts.



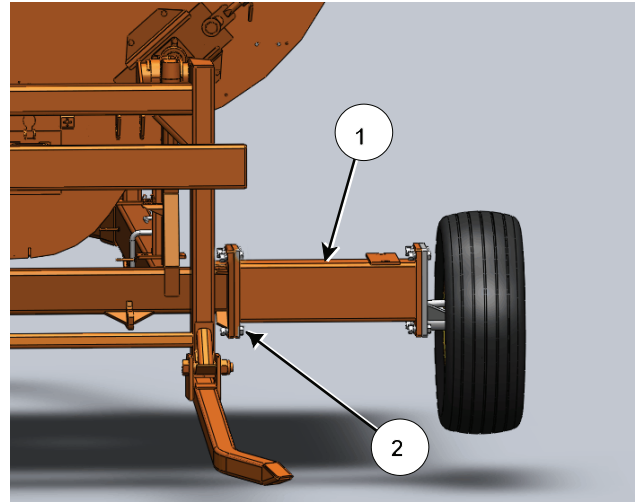
Install Right Axle Extension

1.1cCropC

Assembly of EZ Feed II on the Bale Pro 7000

If the Bale Pro has 16.5 x 16.1 tires, the spindles do not need changing. The right axle needs the axle extension tube installed.

1. Remove the right axle/spindle assembly.
 - a. Install the axle extension tube (1) to the right frame axle mount.
 - i. Use the fasteners from the removed axle.
 - b. Install the new axle/spindle assembly to the extension tube.
 - i. Use 3/4" x 2 1/2" bolts, lockwashers and nuts (2).
 - c. Mount the tire with the wheel bolts.

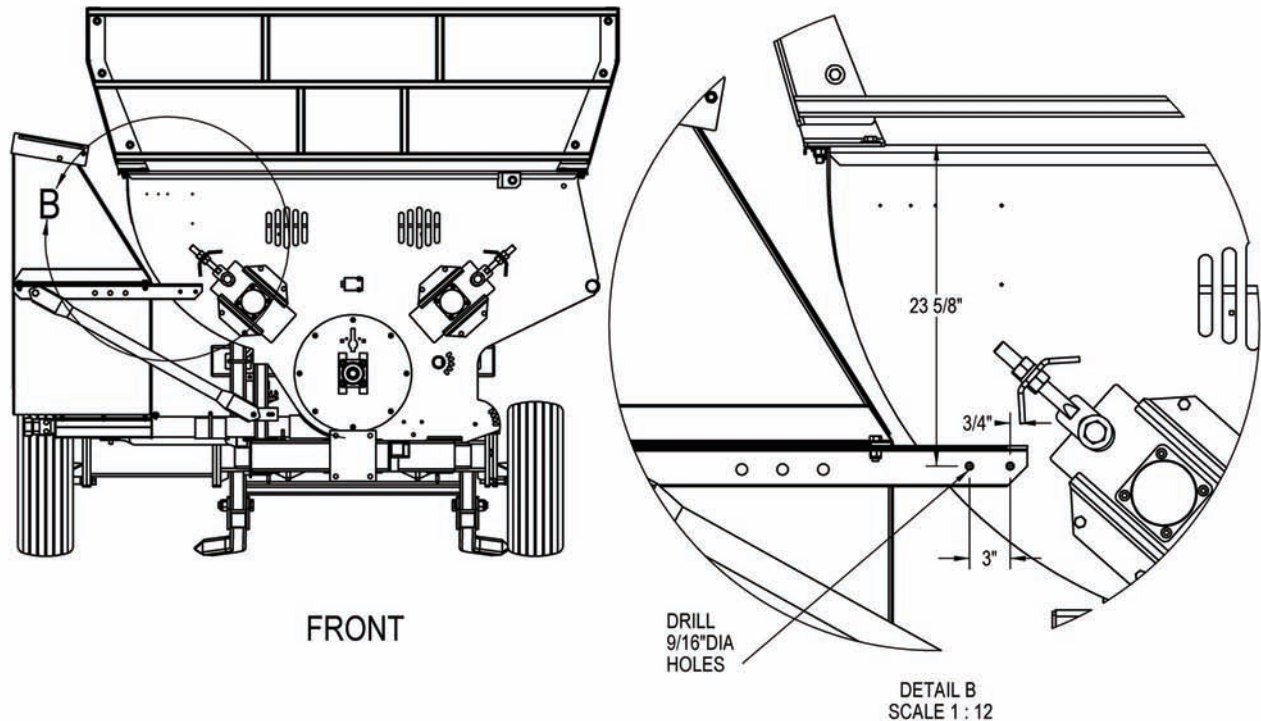


Install Right Axle Extension

1.1cCropC

Drill Holes in Bale Pro Tub End Panels

1. Drill the Bale Pro tub for the tank mount angle brackets.
 - a. Drill 2 holes 9/16" in diameter in the right front of the tub as shown in the diagram below.

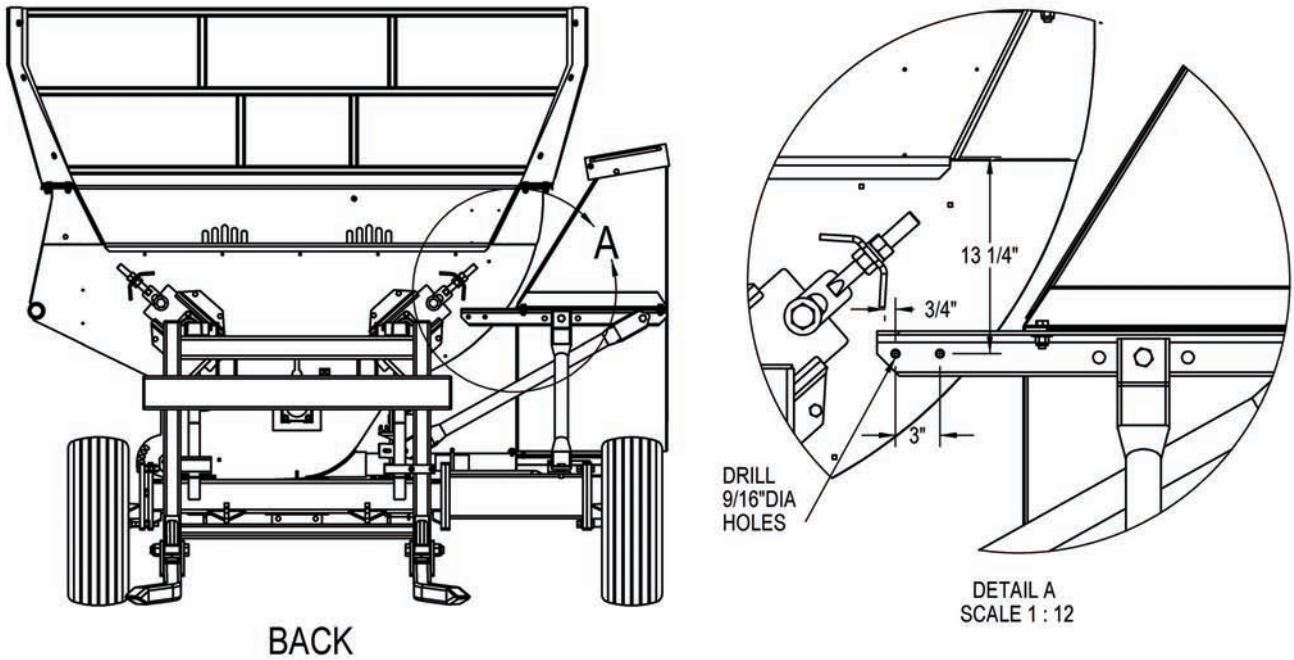


Drill Holes in Front of the Bale Tub

Installation holes front

Assembly of EZ Feed II on the Bale Pro 7000

- b. Drill 2 holes 9/16" in diameter in the right back of the tub as shown in the diagram below.

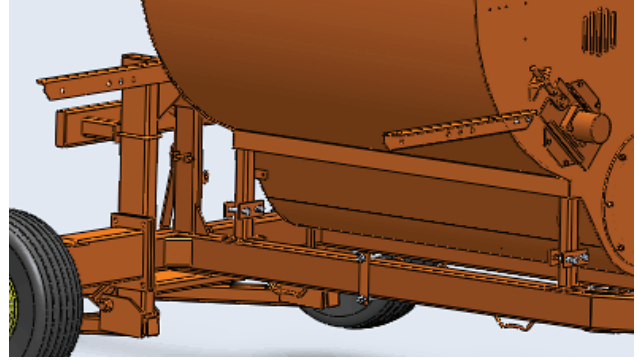


Note:

If the Bale Pro is equipped with the Mechanical Actuated Valve (MAV) and a Feedchopper is installed on the Bale Pro 7000, a shortened MAV bracket will need to be installed. Refer to the instructions in the MAV Kit for Bale Pro 7000 with Feedchopper and Grain Tank.

Install Tank Brackets and Braces

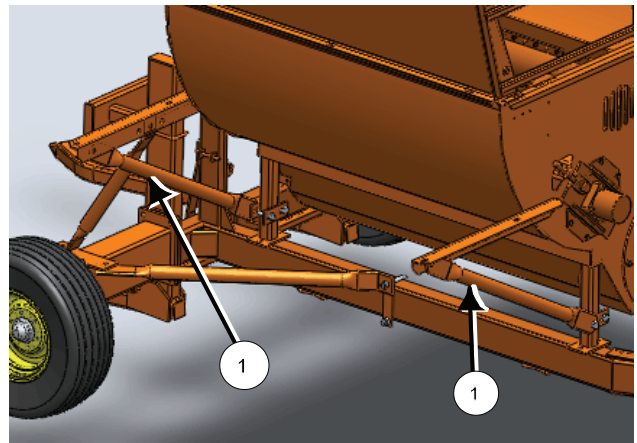
1. Install the angle tank brackets to the tub wall as shown with $\frac{1}{2}$ " x $1\frac{1}{4}$ " hex bolts and locknuts.
 - a. Leave the bolts loose until further instructed.



Install the Tank Brackets to Tub Wall

1.1bCropped

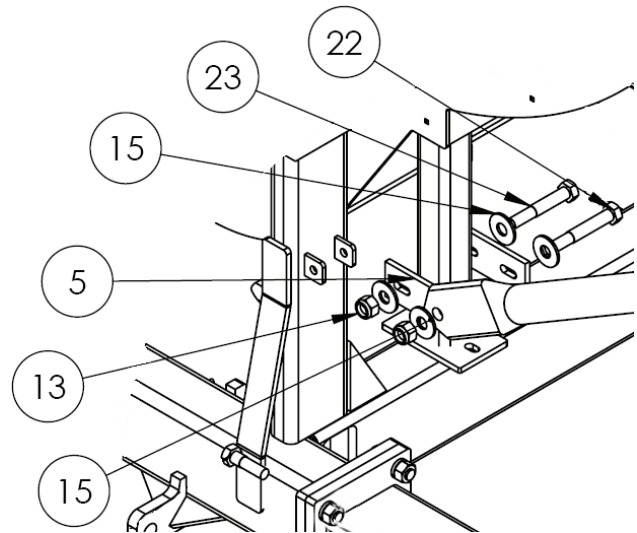
2. Mount the long brace arms (1) to the angle tank brackets and the Bale Pro frame.
 - a. Long brace arms are long round tubes with straight flat ends.
 - b. Connect the braces to the tank brackets with $\frac{3}{4}$ " x 2" bolts and locknuts through the end hole of the brackets.



Mount Brace Arms To Tank Brackets

1.1dCroppedC

- c. Place the $2\frac{1}{2}$ " x 6" flatbars with slots (5) on the front and back legs of the Bale Pro.
- d. Through the slot nearest the Bale Pro tub wall, place a $\frac{3}{4}$ " x $4\frac{1}{2}$ " bolt (23), flatwashers (15) and locknuts (13).
- e. Through the outer slot place a $\frac{3}{4}$ " x 5 bolt (23), flatwashers (15) and locknuts (13).
- f. Connect the brace arm to the outside of the Bale Pro leg with one of the $\frac{3}{4}$ " bolts.

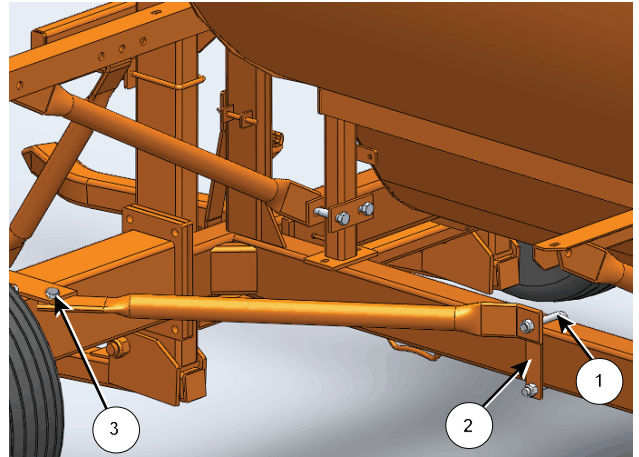


Lower Brace Connection

Tank Brace

Assembly of EZ Feed II on the Bale Pro 7000

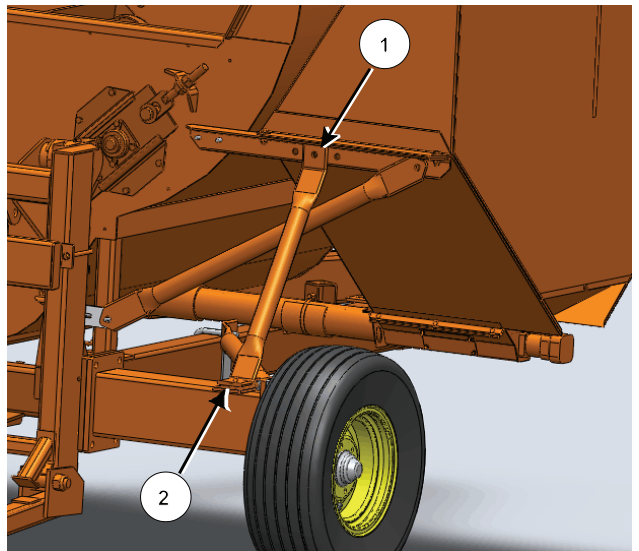
3. Mount the axle front brace tube.
 - a. The axle front brace tube is a long round tube with one straight flat end and one bent flat end.
 - b. Place a 3/4" x 6" x 5 1/2" u-bolt (1) over the Bale Pro frame tube.
 - c. Place the 1/4" x 7 1/2" x 8 1/2" flatbar (2) with slots onto the u-bolt.
 - d. Fasten the lower leg of the u-bolt with 3/4" flatwasher and locknut.
 - e. Place the bent end of the brace onto the upper leg of the u-bolt and fasten with a locknut.
 - f. Place the straight end of the brace under the axle tab.
 - g. Fasten with a 3/4" flatwasher. 3/4" x 2" bolt and locknut.



Mount Axle Front Brace

11d3V2C

4. Mount the axle rear brace tube.
 - a. The axle rear brace tube is a short round tube with 2 bent flat ends.
 - b. Place a 3/4" x 2" bolt into the brace and tank bracket (1). Fasten with a locknut.
 - c. Place the axle brace on top of the axle rear tab (2).
 - i. Fasten with 3/4" x 2" bolt, flatwasher and locknut.

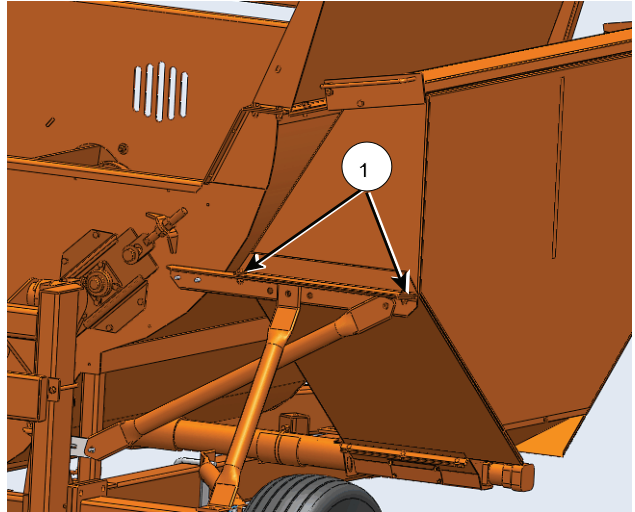


Mount Axle Rear Brace

CleanoutCroppedC

Assembly of EZ Feed II on the Bale Pro 7000

5. Mount the tank to the angle brackets using $\frac{1}{2}$ " x $1\frac{1}{2}$ " bolts and locknuts (1).
 - a. Ensure a $\frac{1}{2}$ " flat washer is used top and bottom.
6. Tighten all bolts securing the tank into position.

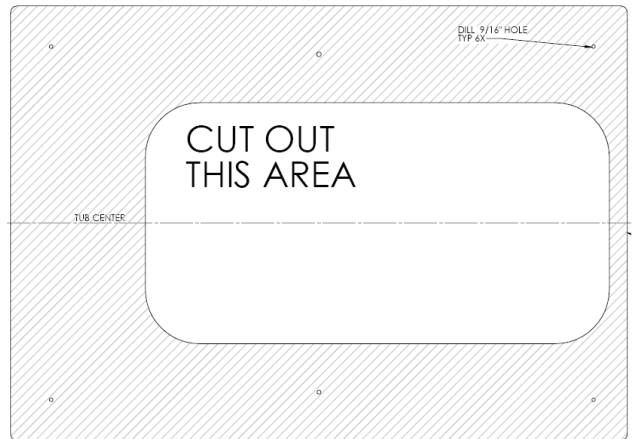


Mount the Tank

TankMountC

Cut the Bale Pro Tub Wall

1. Cut out the pattern in the center of the paper tub wall template.



Paper Tub Wall Cutout Template

PaperTemplate

2. Lift the auger assembly into position on the bottom of the grain tank and secure with 2 of $\frac{3}{8}$ " x 1" bolts and nuts.



Assembly of EZ Feed II on the Bale Pro 7000

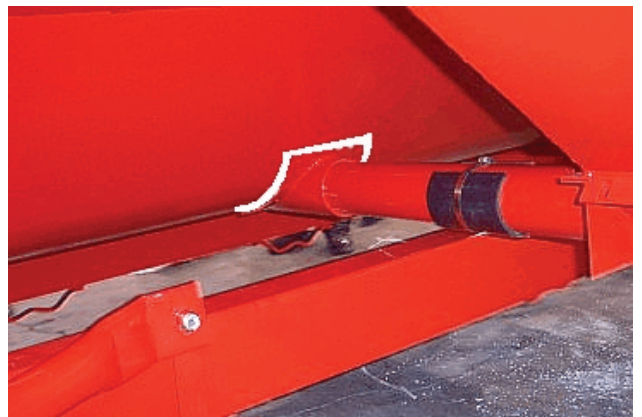
- Slide the auger tube toward the Bale Pro tub wall until the mounting flange almost contacts the tub.



Auger Tube Near Tub Wall

AugerFlange

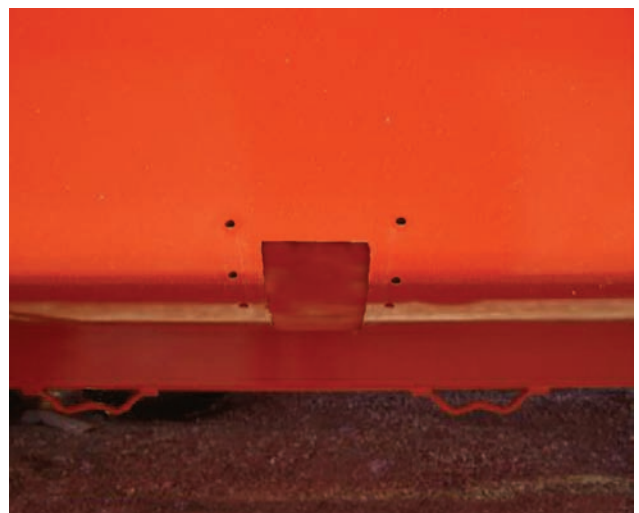
- Insert the paper cutout template between the mounting flange and the tub wall.
- Move the auger tube against the tub wall.
- Adjust the paper template so that the mounting holes are centered in the auger flange slots.
- Securely tape the paper template to the tub wall.



Position & Tape Paper Cutout Template

augerflangetemplate

- Move the auger tube away from the tub wall.
- Remove the auger assembly from the bottom of the grain tank to give room to cut out the tub wall.
- Trace the outline of the paper template onto the tub wall.
- Mark the centers of the mounting holes to be drilled into the tub wall.
- Remove the paper template.
- Cut out the tub wall along the marks from the outline of the paper template.
- Drill the mounting holes into the tub wall.



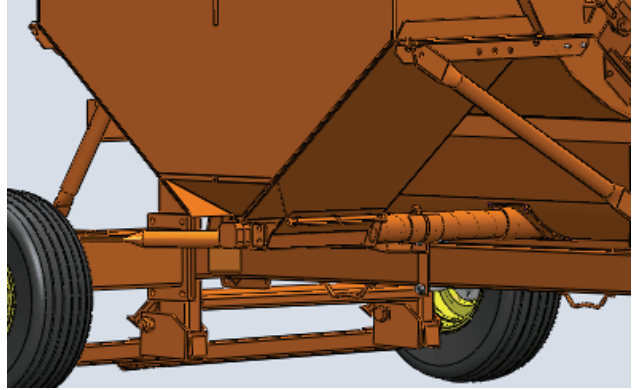
Tank Cut and Drilled

TankCut

Assembly of EZ Feed II on the Bale Pro 7000

Connect the Auger to Tank and Tub Wall

1. Ensure the weatherstrip seals on the auger tank mount flanges are in good condition.
2. Place the auger assembly onto the tank using 3/8" x 1" bolts, flatwashers and locknuts.
3. Slide the tank mount flange toward the tub.
 - a. Fasten to the tub with 3/8"x1, flatwashers and locknuts.



Auger Assembly Mounted on Tank and Tub 11eCropped

Install the Hydraulic Hoses

1. Install the 90 degree adaptor fittings onto hydraulic motor.
2. Connect the 2 short hydraulic hoses to the hydraulic motor on the auger assembly.
3. Route the hoses toward the front of the Bale Pro and secure as required with the hose holder and self tapping screws.
 - a. Attach the longer hoses that will provide the additional length required to connect the auger motor to the tractor or the electro-hydraulic valve option.



Attach Hydraulic Hoses to Frame

HydHoses

Table of Contents

1.0 Main Assembly

2.0 Drag Auger Assembly

3.0 Hydraulic Motor Assembly

4.0 Grain Tank Assembly

5.0 Hydraulic Components

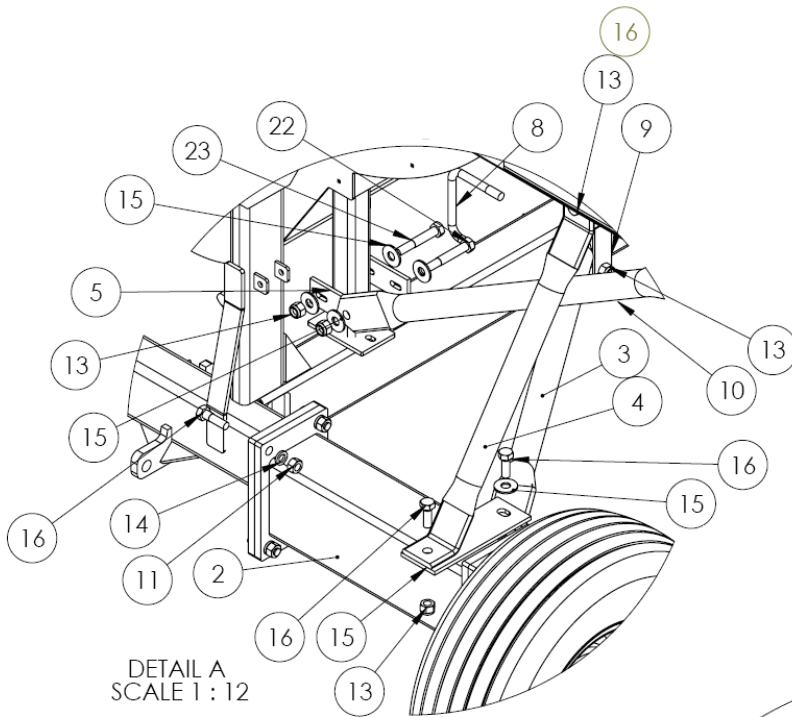
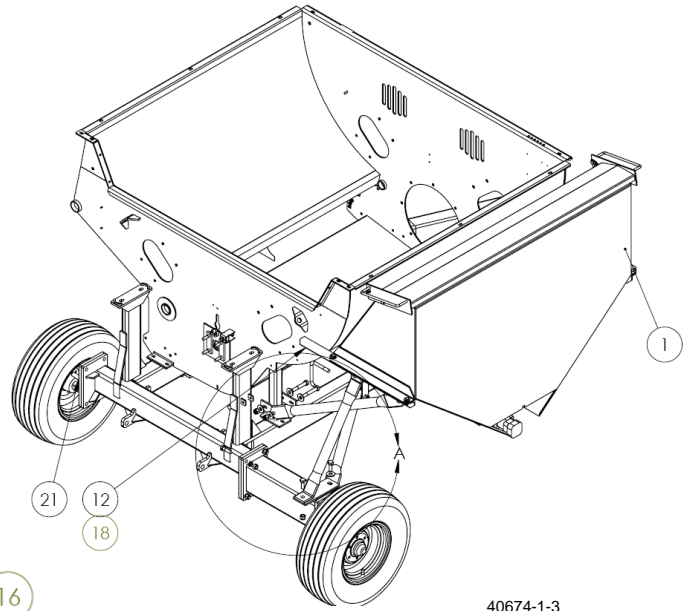
6.0 Decals

7.0 Electric/Hydraulic Option

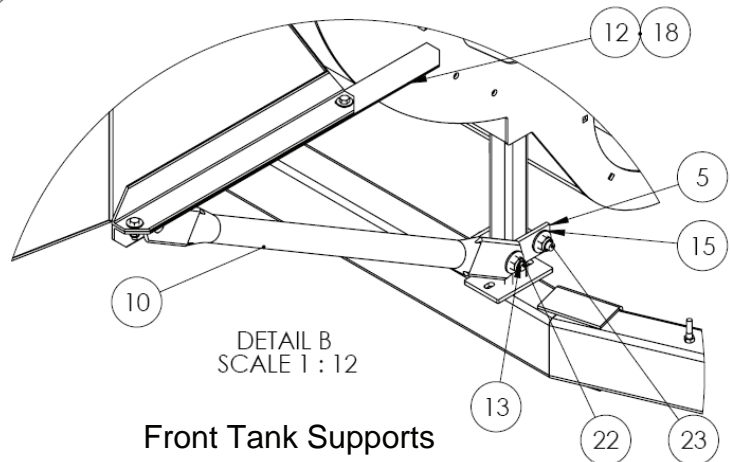
8.0 Selector Valve Harness

9.0 Selector Valve

1.0 Main Assembly



Rear Tank Supports



Front Tank Supports

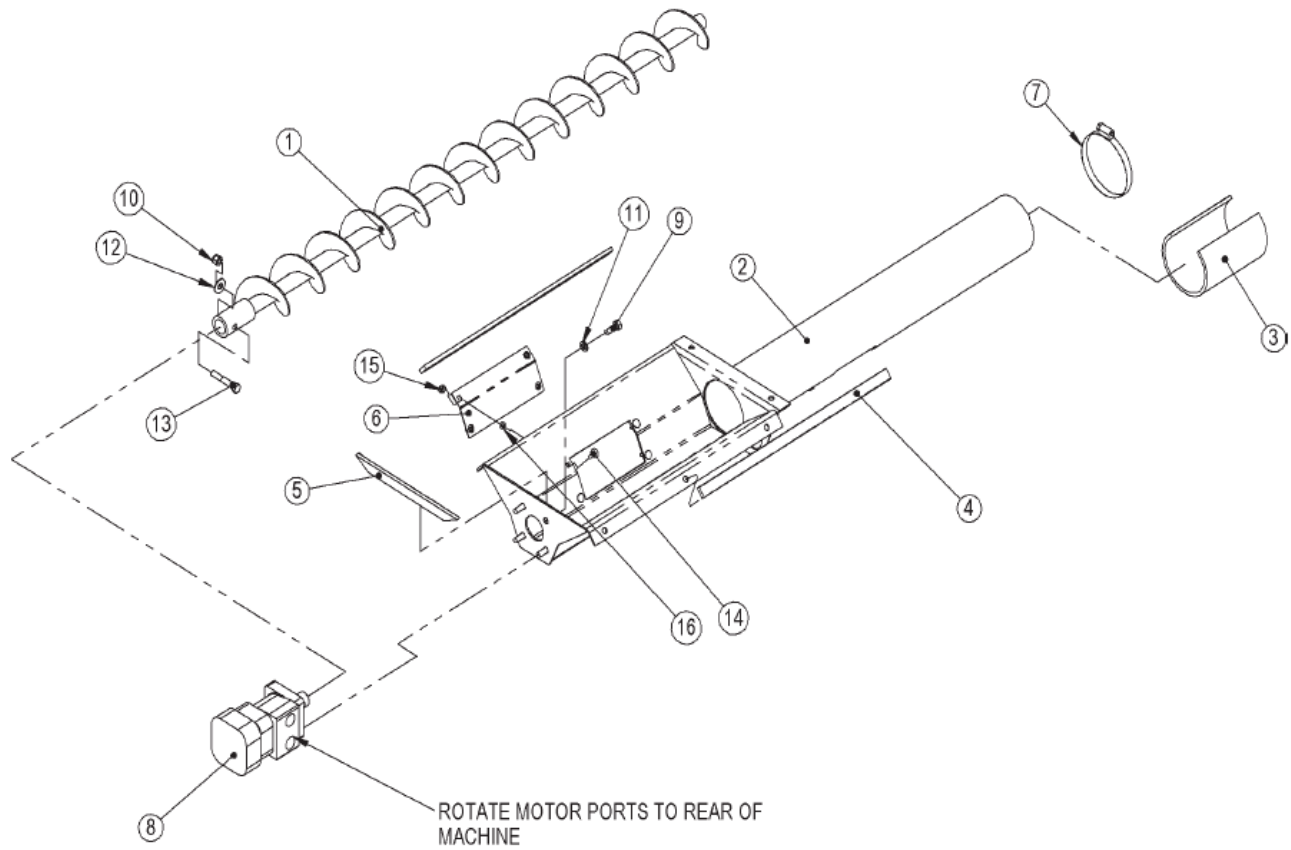
Parts Information - EZ Feed II on 7000 Bale Processor

Page 2 of 2

1.0 Main Assembly

ITEM NO.	PART NO.	DESCRIPTION	QTY.
1	40675	ASSY,TANK,GRAIN	1
2	40672	AXLE EXT,EZFEED7000	1
3	E10695	PIPE,BRACE,AXLE_FRAME	1
4	E10696	PIPE,BRACE,TANK_AXLE	1
5	E10692	FLATBAR,3/8X2-1/2X6,SLOTS	4
6	E10697	TEMPLATE,PAPER CUTOUT	1
7	49880	ASSY,HYD,EZ_FEED	1
8	33882	BOLT,U,SQ,3/4-10,6-1/16X5-1/2	1
9	E7829	PLATE,1/4X7-1/2,13/16X2,6C	1
10	E7811	PIPE,BRACE,FRAME_TANK	2
11	31167	NUT,HEX,3/4,UNC,GR5,ZP	4
12	31173	NUT,NYLOCK,1/2,UNC,ZP	4
13	31175	NUT,NYLOCK,3/4,UNC,ZP	11
14	31246	WASHER,LOCK,3/4,ZP	4
15	31238	WASHER,FLAT,3/4,ZP	10
16	31339	BOLT,HEX,3/4X2,UNC,GR5,ZP	5
17	31040	BOLT,HEX,3/4X2-1/2,UNC,GR5,ZP	4
18	31332	BOLT,HEX,1/2X1-1/4,UNC,GR5,ZP	4
19	31066	BOLT,HEX,3/8X1-3/4,UNC,GR5,ZP	6
20	31176	NUT,NYLOCK,3/8,UNC,ZP	6
21	45081	SUSP,AXLE,CW HUB	2
22	31486	BOLT,HEX,3/4X5,UNC,GR5,ZP	2
23	31488	BOLT,HEX,3/4X4-1/2,UNC,GR5,ZP	2

2.0 Drag Auger Assembly



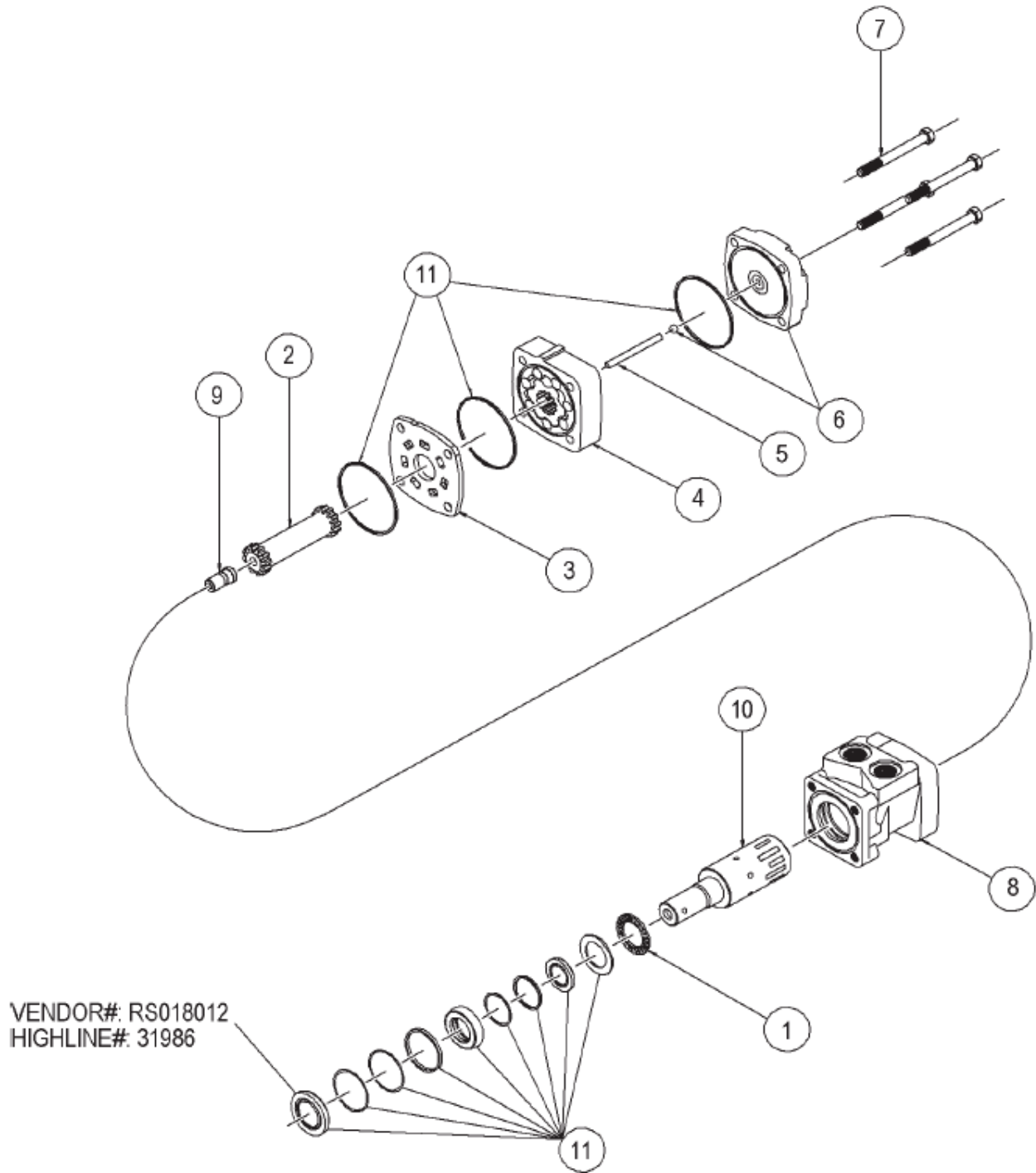
Parts Information - EZ Feed II on 7000 Bale Processor

Page 2 of 2

2.0 Drag Auger Assembly

ITEM NO.	PART NO.	DESCRIPTION	QTY
1	49694	FLIGHT,AUGER	1
2	49695	TUBE,AUGER,DRAG	1
3	E7828	PIPE,COVER,CLEAN OUT	1
4	E7836	WEATHERSTRIP,1/4X3/4X18-3/4L	2
5	E7837	WEATHERSTRIP,1/4X3/4X10-3/16L	1
6	E7843	DOOR,CLEAN_OUT,INTAKE	1
7	33954	CLAMP,HOSE,3-1/8 - 6,1/2	1
8	37989	HYD,MOTOR,10in3	1
9	31043	BOLT,HEX,3/8X1,UNC,GR5,ZP	4
10	31176	NUT,NYLOCK,3/8,UNC,ZP	1
11	31319	WASHER,LOCK,3/8,ZP	4
12	31351	WASHER,FLAT,3/8,ZP	1
13	31830	BOLT,HEX,3/8X2-1/4,UNC,GR5,ZP	1
14	37998	BOLT,CARR,1/4X3/4,UNC,GR5,ZP	4
15	31174	NUT,NYLOCK,1/4,UNC,ZP	4
16	31895	RETAINER,BOLT,1/4	4

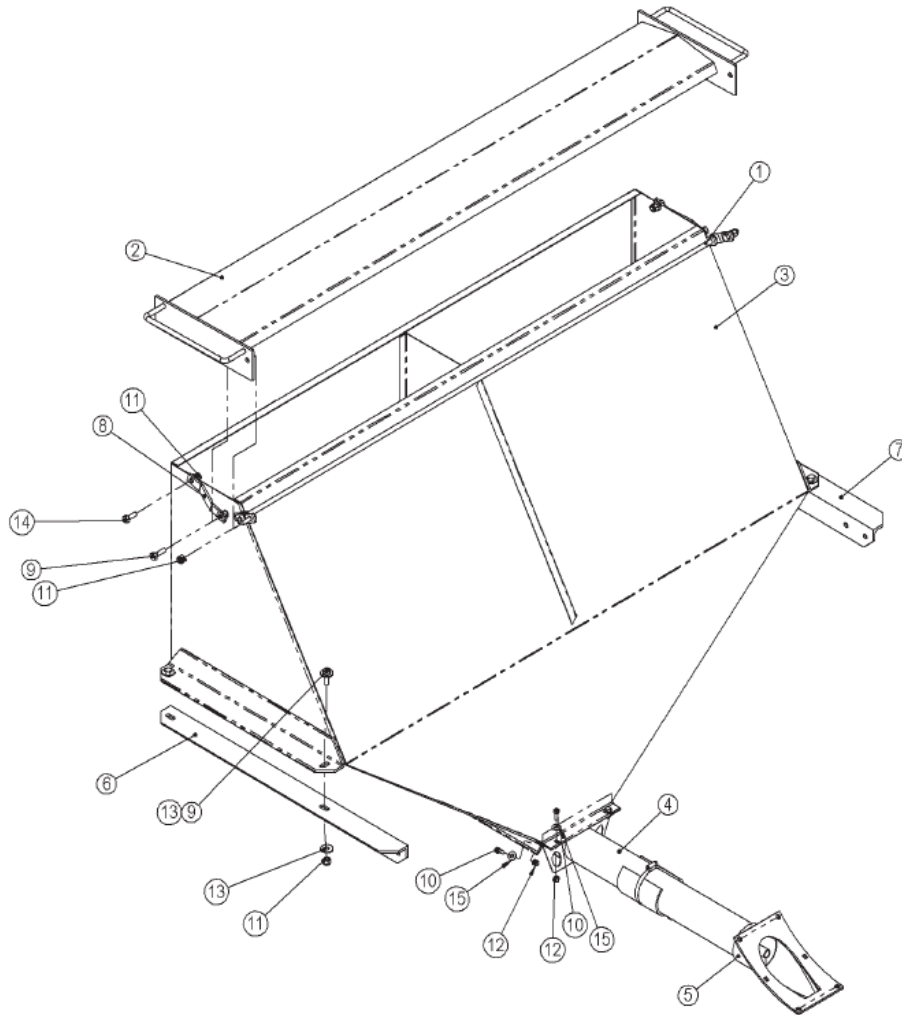
3.0 Hydraulic Motor Assembly



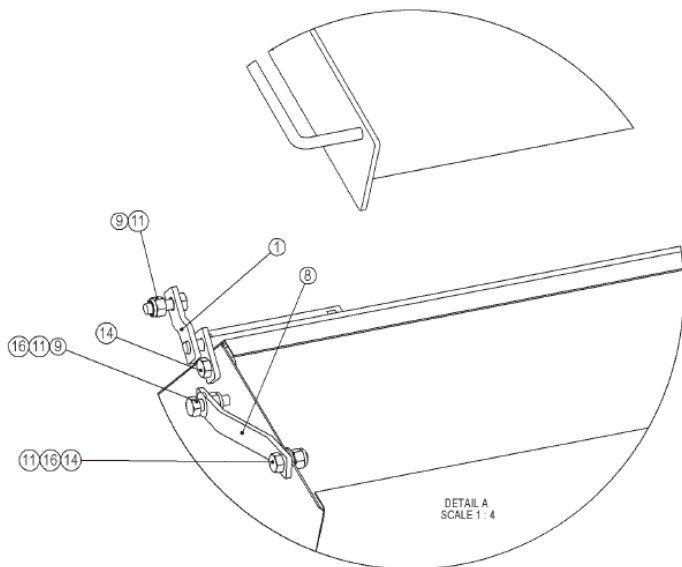
3.0 Hydraulic Motor Assembly

ITEM NO.	PART NO.	DESCRIPTION	QTY.
1	31833	HYD,THRUST BEARING	1
2	31834	HYD,DRIVE LINK	1
3	31835	HYD,WEAR PLATE	1
4	31836	HYD,ROTOR ASSEMBLY	1
5	31837	HYD,DRIVE LINK PIN	1
6	31838	HYD,ENDCOVER KIT	1
7	31839	HYD,BOLT,ENDCOVER	4
8	31840	HYD,HOUSING	1
9	31841	HYD,COOLING PLUG	1
10	31842	HYD,SHAFT	1
11	32735	SEAL KIT	1

4.0 Grain Tank Assembly



201008



201010

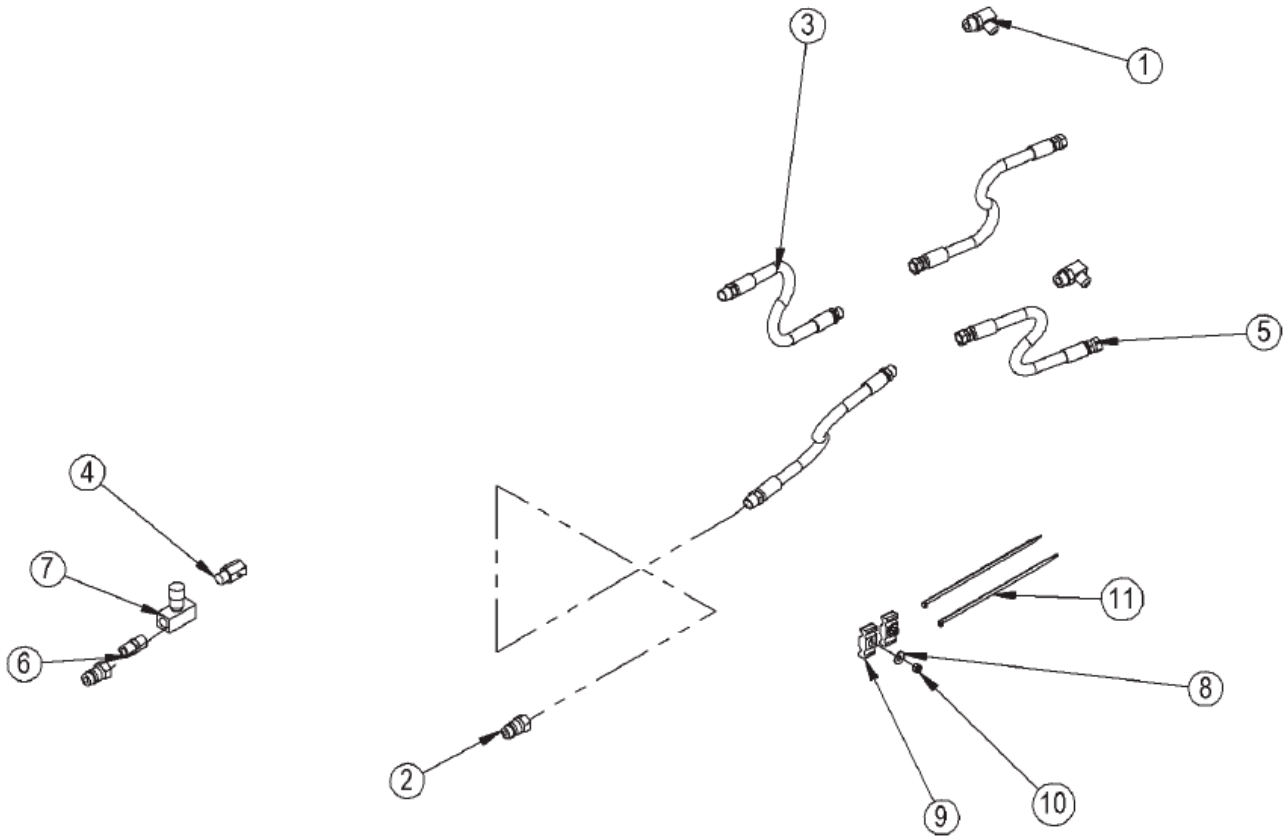
Parts Information - EZ Feed II on 7000 Bale Processor

Page 2 of 2

4.0 Grain Tank Assembly

ITEM NO.	PART NO.	DESCRIPTION	QTY.
1	49693	LINKAGE,LID	1
2	49696	LID, TOP	1
3	49876	TANK	1
4	49877	ASSY,AUGER,DRAG	1
5	40673	ADAPTER TUBE AUGER 7000	1
	31066	BOLT,HEX,3/8X1-3/4,UNC,GR5,ZP	6
	31176	NUT,NYLOCK,3/8,UNC,ZP	6
	31351	WASHER,FLAT,3/8,ZP	6
6	E7808	ANGLE,TUB_TANK,RH	1
7	E7809	ANGLE,TUB_TANK,LH	1
8	E7822	ARM,LINK,LID, LONG	2
9	31016	BOLT,HEX,1/2X1-1/2,UNC,GR5,ZP	8
10	31043	BOLT,HEX,3/8X1,UNC,GR5,ZP	8
11	31173	NUT,NYLOCK,1/2,UNC,ZP	12
12	31176	NUT,NYLOCK,3/8,UNC,ZP	8
13	31236	WASHER,FLAT,1/2,ZP	8
14	31332	BOLT,HEX,1/2X1-1/4,UNC,GR5,ZP	4
15	31351	WASHER,FLAT,3/8,ZP	8
16	33879	WASHER,FLAT,SAE,1/2,ZP	4

5.0 Hydraulic Components



5.0 Hydraulic Components

ITEM NO.	PART NO.	DESCRIPTION	QTY.
1	30145	HYD,FIT,ELBOW,10MB-8MJ90	2
2	30209	HYD,FIT,PIONEER,MALE,8FP	2
3	30280	HYD,HOSE,3/8X96,8MP-8MJ,2W	2
4	30560	HYD,VALVE,CHECK,08MP-08FP	1
5	30585	HYD,HOSE,3/8X96,8FJX-8FJX,2W	2
6	32082	HYD,FIT,ADAPTOR,8MP-8MP	1
7	32975	HYD,VALVE,CONTROL,FLOW,8FP	1
8	31239	WASHER,FLAT,5/16,ZP	2
9	30210	HYD,CLAMP,HOSE,1/2	2
10	31177	NUT,NYLOCK,5/16,UNC,ZP	2
11	31613	TIE,CABLE,NYLON,BLACK,11 1/2"	2

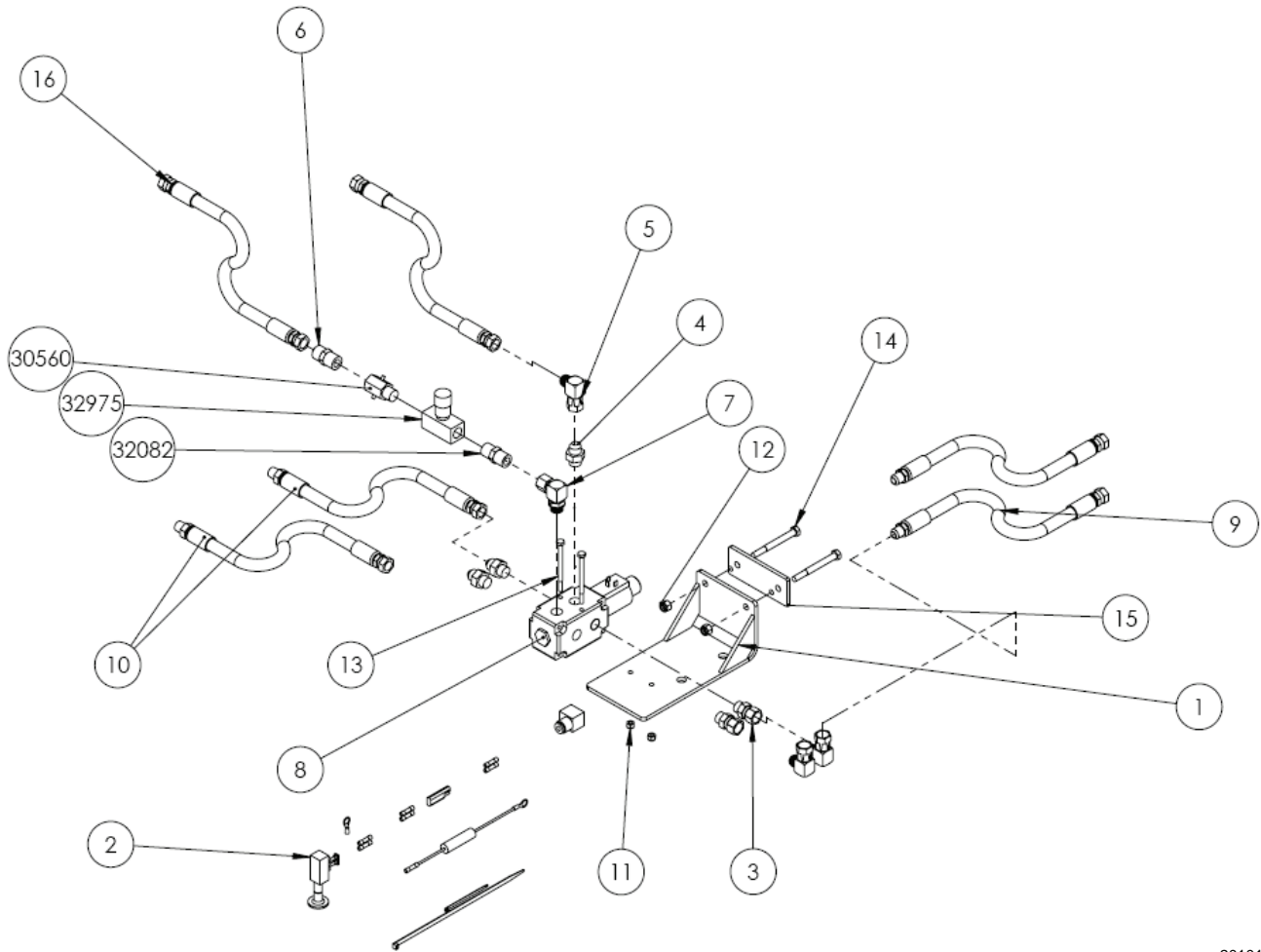
Parts Information - EZ Feed II on 7000 Bale Processor

6.0 Decals

Page 2 of 2

ITEM NO.	PART NO.	DESCRIPTION	QTY.
	E8608	DECAL,EZFEEDII,5X71	1
	30577	DECAL,RED REFL,2X9	1
	30578	DECAL,AMBER REFL,2X9	1
	E10804	DECAL,WARNING,DO NOT RIDE	1
	E10803	DECAL, WARNING,DO NOT ENTER TANK	1
	E10802	DECAL,DANGER, AUGER FLIGHTING	1
	E7553	DECAL,WARNING,TURN OFF TRACTOR	1
	E9006	DECAL,WARNING,HIGH PRESSURE FLUID	1

7.0 Electric/Hydraulic Option



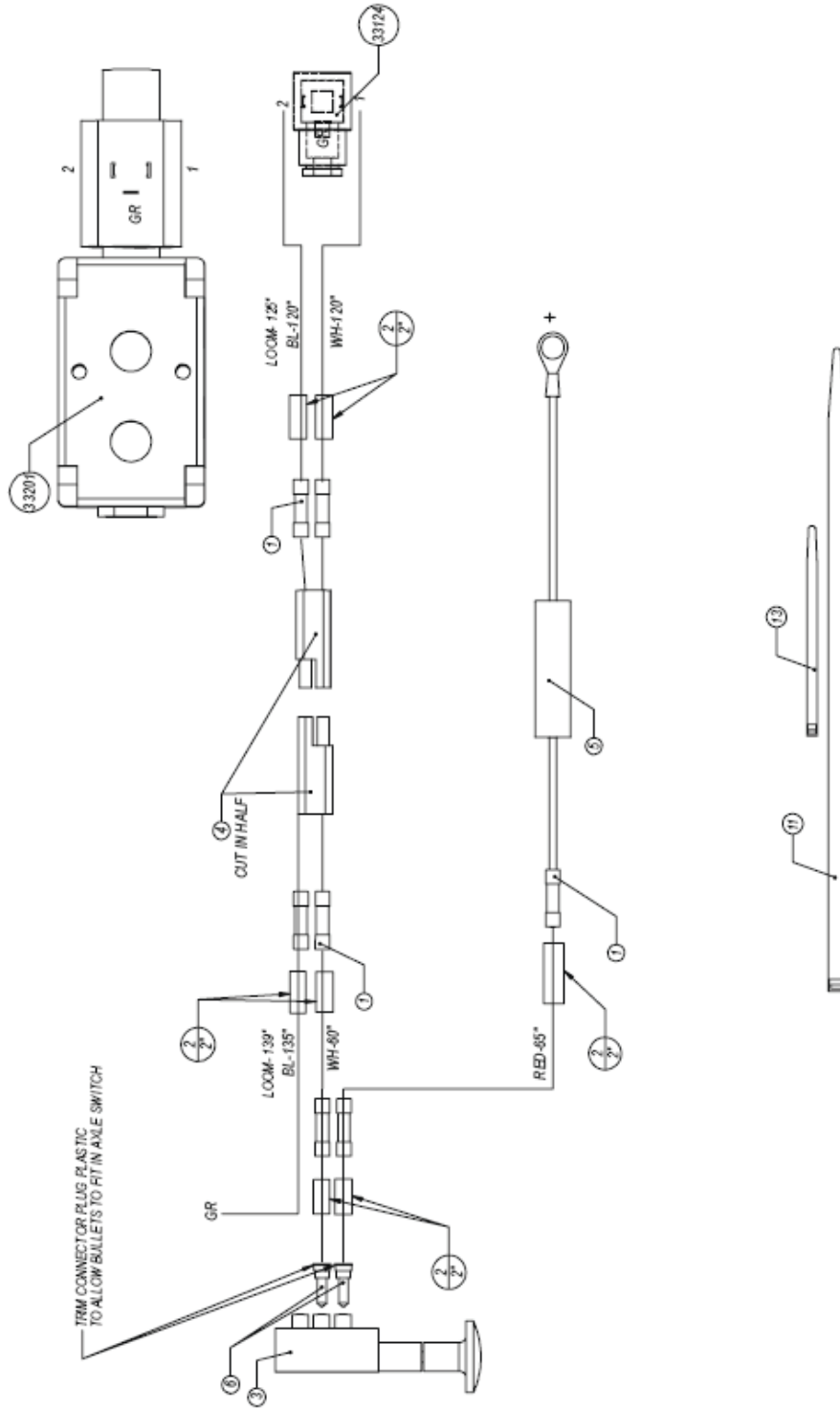
Parts Information - EZ Feed II on 7000 Bale Processor

Page 2 of 2

7.0 Electric/Hydraulic Option

ITEM NO.	PART NO.	DESCRIPTION	QTY.
1	49419	MOUNT,ELEC_HYD,7010	1
2	49421	ELEC,HARNESS,SELECTOR VALVE	1
3	30152	HYD,FIT,ADAPTER,8MB-8FJX	2
4	30215	HYD,FIT,ADAPTER,8MB-8MJ	3
5	30436	HYD,FIT,ELBOW,8FJX-8MJ90	3
6	31148	HYD,FIT,ADAPTOR,8MP-8MJ	1
7	32023	HYD,FIT,ELBOW,8MB90-8FPX	1
8	33201	HYD,VALVE,ELEC_DOUBLE_SELECTOR	1
9	34007	HYD,HOSE,3/8X174,8FJX-8MJ,2W	2
10	90301	HYDHOSE,3/8X120,8MP-8FJX,2W	2
11	31174	NUT,NYLOCK,1/4,UNC,ZP	2
12	31176	NUT,NYLOCK,3/8,UNC,ZP	2
13	33200	BOLT,HEX,1/4X3-1/2,UNC,GR5,ZP	2
14	31781	BOLT,HEX,3/8X3-1/2,UNC,GR5,ZP	2
15	E6878	PLT,S,1/4X2X5,13/32DIA	1
16	32054	HYD,HOSE,3/8X54,8FJX-8FJX,2W	2

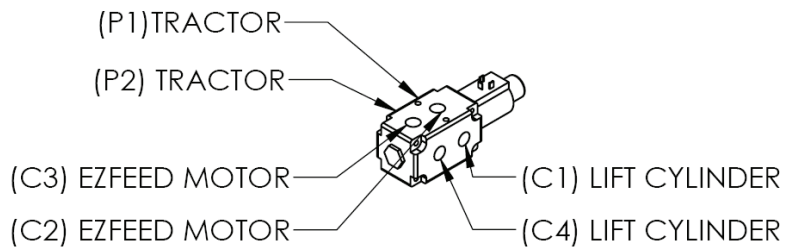
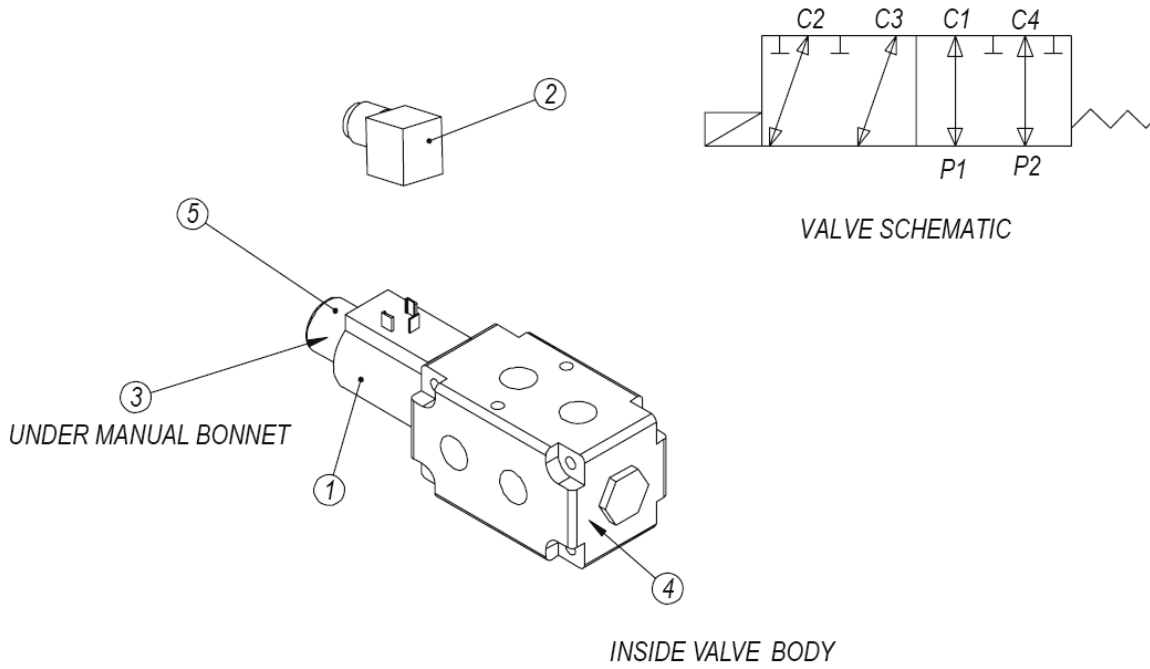
8.0 Selector Valve Harness



8.0 Selector Valve Harness

ITEM NO.	PART NO.	DESCRIPTION	QTY.
1	30408	ELEC,CONN,BUTT,16-14	7
2	31976(1.17)	ELEC,HEAT_SHRINK,DUAL_WALL,1/4	1
3	33123	ELEC,SWITCH,AXLE	1
4	33125	ELEC,CONN,2_POLE,FLAT,16GA	1
5	33127	ELEC,HOLDER,FUSE,15AMP	1
6	33130	ELEC,PLUG,BUL .156,90 DEG	2
7	37980(21.25)	ELEC,WIRE,14GA,STRAND,BLACK	1
8	37981(15)	ELEC,WIRE,14GA,STRAND,WHITE	1
9	92151(5.5)	ELEC,WIRE,16GA,STRAND,RED	1
10	92143(22)	ELEC,LOOM,1/2,SPLIT,CORRUGATED	1
11	31613	TIE,CABLE,NYLON,BLACK,11 1/2"	3
12	92166	ELEC_CONNECTOR,RING,3/8,16-14,ST,INS	1
13	92170	TIE,CABLE,4",BLACK	6

9.0 Selector Valve



Parts Information - EZ Feed II on 7000 Bale Processor

9.0 Selector Valve

Page 2 of 2

ITEM NO.	PART NO.	DESCRIPTION	QTY.
1	33126	COIL,C4801-V12-DCGM5050/5051	1
2	33124	MPM182-09 DIN CONNECTOR	1
3	33128	NUT GM 5043	1
4	33129	SPRING,RETURN	1
5	33138	BOOT,OVERIDE	1

Highline New Agricultural Equipment Limited Warranty

One (1) Year / 12 Months

Parts and Labour

Highline Manufacturing Ltd. (hereinafter "Highline") warrants this new Agricultural product of Highline's manufacturer to be free from defects in material and workmanship, under normal use and service for one (1) full year after initial purchase/retail sale. Highline will warrant its product for one (1) year parts and labour, if performed by a qualified Dealer. This Limited Warranty shall apply only to complete machines of Highline's manufacture, parts are covered by a separate Limited Warranty.

EQUIPMENT AND ACCESSORIES NOT OF HIGHLINE'S MANUFACTURE ARE WARRANTED ONLY TO THE EXTENT OF THE ORIGINAL MANUFACTURER'S WARRANTY AND SUBJECT TO THEIR ALLOWANCE TO HIGHLINE ONLY IF FOUND DEFECTIVE BY SUCH MANUFACTURER.

During the Limited Warranty period specified above, any defect in material or workmanship in any warranted item of Highline Agricultural Equipment not excluded below shall be repaired or replaced at Highline's option without charge by any authorized independent Highline Dealer. An authorized Dealer must make the warranty repair or replacement. Labour in accordance with Highline's labour reimbursement policy. Highline reserves the right to supply remanufactured replacement parts as it deems appropriate.

RETAIL PURCHASER RESPONSIBILITY

This Limited Warranty requires proper maintenance and periodic inspections of the Agricultural Equipment as indicated in the Operator's Manual furnished with each new Agricultural Equipment. The cost of routine or required maintenance and services is the responsibility of the retail purchaser. The retail purchaser is required to keep documented evidence that these services were performed. This Highline New Agricultural Equipment Limited Warranty may be subject to cancellation if the above requirements are not performed.

EXCLUSIONS AND LIMITATIONS

The warranties contained herein shall **NOT APPLY TO:**

1. Any defect which was caused (in Highline's sole judgement) by other than normal use and service of the Agricultural Equipment, or by any of the following: (i) accident (ii) misuse or negligence (iii) overloading (iv) lack of reasonable and proper maintenance (v) improper repair or installation (vi) unsuitable storage (vii) non-Highline approved alteration or modification (viii) natural calamities (ix) vandalism (x) parts or accessories installed on Agricultural Equipment which were not manufactured or installed by Highline authorized Dealers (xi) the elements (xii) collision or other accident.
2. Any Agricultural Equipment whose identification numbers or marks have been altered or removed.
3. Any Agricultural Equipment which any of the required or recommended periodic inspection or services have been performed using parts not manufactured or supplied by Highline or meeting Highline Specification including, but without limitation, lubricants (oil, grease), belt lacings, and hydraulic fluids.
4. Equipment used for rental, custom work, industrial and construction or if equipment is used for any other purpose than the intended agricultural application.
5. Any Agricultural Equipment used in demonstrations not performed by a Highline Dealer. Warranty will be at the discretion of Highline for all other demonstration warranty.
6. New Agricultural Equipment delivered to the retail purchaser in which the warranty registration has not been completed and returned to Highline within ten (10) days from the date of purchase.
7. Any defect that was caused (in Highline's sole judgement) by operation of the Agricultural Equipment not abiding by standard operating procedures outlined in the Operator's Manual.
8. Tire Limited Warranties and support are the responsibility of the respective product's manufacturer.
9. Transportation costs, if any, of transporting to the Highline Dealer.
10. In no event shall Highline's liability exceed the purchase price of the product.
11. Highline shall not be liable to any person under any circumstances for any incidental or consequential damages (including but not limited to, loss of profits, out of service time and damage to equipment which this equipment may be attached) occurring for any reason at any time.
12. Diagnostic and overtime labour premiums are not covered under this Limited Warranty Policy.
13. Depreciation damage caused by normal wear, lack of reasonable and proper maintenance, failure to follow operating instructions, misuse, and/or lack of proper protection during storage.
14. Accessory systems and electronics not of Highline's manufacture are warranted only to the extent of such manufacturer's respective Limited Warranty if any.
15. Wear items which are listed by product group below:

COMMON WEAR ITEMS

Roller chain, sprockets, belts, clutches, shear bolts, clutch components, chains, gearbox housings bolts/torqued parts, flails, feed roller belting, coupler chain, DRV couplers, bogie wheels, apron tines and hoses.

PARTS WARRANTY

Parts replaced in the warranty period will receive the balance of the one year New Agricultural Equipment Limited Warranty. Replacement parts after the original machine warranty are warranted to be free from defects of material for ninety (90) days or the part will be repaired or replaced, without labour coverage for removal and reinstallation.

EXCLUSION OF WARRANTIES

UNLESS OTHERWISE REQUIRED BY LAW, AND EXCEPT FOR THE WARRANTIES EXPRESSLY AND SPECIFICALLY MADE HEREIN, HIGHLINE MAKES NO OTHER WARRANTIES, AND ANY POSSIBLE LIABILITY OF HIGHLINE HEREIN UNDER IS IN LIEU OF ALL OTHER WARRANTIES, EXPRESS, IMPLIED, OR STATUTORY, INCLUDING, BUT NOT LIMITED TO, ANY WARRANTIES OF MERCHANT ABILITY OR FITNESS FOR A PARTICULAR PURPOSE. HIGHLINE RESERVES THE RIGHT TO MODIFY, ALTER AND IMPROVE ANY PRODUCT WITHOUT INCURRING ANY OBLIGATION TO REPLACE ANY PRODUCT PREVIOUSLY SOLD WITH SUCH MODIFICATION. NO PERSON IS AUTHORIZED TO GIVE ANY OTHER WARRANTY, OR TO ASSUME ANY ADDITIONAL OBLIGATION ON HIGHLINE'S BEHALF.

HIGHLINE MFG. LTD.

P.O. Box 307, VONDA SK SOK 4N0 CANADA
TEL.306-258-2233 FAX.306-258-2010
TOLL FREE 1-800-665-2010

DELIVERY AND WARRANTY REGISTRATION

DELIVERY DATE _____
MONTH DAY YR

WARRANTY COVERAGE IS EFFECTIVE ONLY WHEN THIS FORM HAS ALL APPLICABLE INFORMATION COMPLETED, IS SIGNED BY BOTH THE OWNER AND THE AUTHORIZED SELLER AT THE TIME OF DELIVERY, AND IS RETURNED TO **HIGHLINE MANUFACTURING LTD.** WITHIN 10 DAYS FROM THE DATE OF PURCHASE. WARRANTY SERVICE MAYBE DENIED IF THIS FORM CONTAINS FALSE INFORMATION OR IS INCOMPLETE.

HIGHLINE AUTHORIZED DEALER or

HIGHLINE SALES DEPARTMENT

CUSTOMER NAME

MAILING ADDRESS _____

MAILING ADDRESS _____

PHONE _____

PHONE _____

I HEREBY ACKNOWLEDGE THAT:

1. I have received and accepted delivery of equipment described.
2. The equipment was checked thoroughly for loose or missing parts and has been adjusted in accordance with the PRE-DELIVERY CHECKLIST.
3. I have been provided with and have carefully read the Operator's Manual.
4. I have read and understand thoroughly the SAFETY PRECAUTIONS found in the Safety Section of the Operator's Manual.
5. I have read and understand the nature and extent of the Warranty and understand clearly that there were and are no other representations or warranties, either express or implied, made by anyone.
6. I have been advised on proper operation, maintenance and lubrication procedures of this equipment.
7. I have been instructed and do understand the application, limitations and capacities that this equipment was designed and recommended for, all of which is described in the Operator's Manual and other literature published by Highline Mfg. Ltd.

PLEASE TYPE OR PRINT LEGIBLY

BASIC MACHINE MODEL NO. _____ SERIAL # _____

OPTIONAL EQUIPMENT

INSTRUCTIONS

1. Make sure registration is complete and signed.
2. White and yellow copies mail direct to HIGHLINE MFG. LTD.
3. Pink copy - Highline Authorized Dealer file.
4. Goldenrod copy - maintain in Operator Manual.

Authorized Sales Signature

Owner or Designated Representative Signature

NOTE: BOTH AUTHORIZED SELLER AND OWNER MUST SIGN TO VALIDATE THE WARRANTY